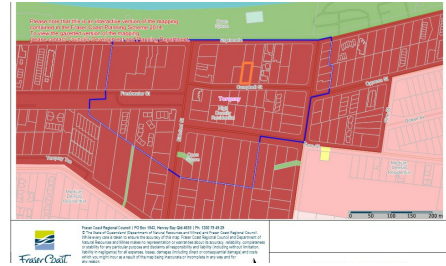




Joseph Weger @realty



SOLD

HIGH DENSITY ZONED DEVELOPMENT POTENTIAL

Situated right in the heart of Hervey Bay and backing onto the Esplanade this large high density zoned lot has amazing development potential. With parks, playgrounds, pubs, clubs, cafe's, restaurants and beach all on your doorstep this property is a must see.

Features:

- 3 x Bedrooms
- Only one street from the beach, backing onto the Esplanade
- Located walking distance to pubs, shops and cafes
- Single Carport
- Large 911m2 (approx.) High Density zoned lot

This amazing opportunity will not last long so contact Joseph Weger on 0400 103 936 to arrange your viewing

3 BED | 1 BATH | 1 CAR

PRICE:
\$549,000

OPEN FOR INSPECTION:
N/A



Joseph Weger
0400103936
joseph.weger@atrealty.com.au
www.atrealty.com.au