

SOLD

UNDER OFFER WITH HELANA KUHL

Nestled in an elevated pocket of Jindalee, this light-filled home emits charm and warmth. Modern features and quality fittings have been blended to provide an impeccable mix of style and sophistication. With dual living potential, this is the ideal home for those looking for perfection in a much sought-after location.

The well thought out floor plan caters for the entire family's needs, providing substantial space and separation throughout. With multiple outdoor and indoor entertainment areas, there is plenty of room for the extended family to enjoy their privacy, whether that's watching a movie in the home theatre, working in the office, enjoying a game of pool or a workout in the large rumpus room, sitting on the deck reading a book, or going for a refreshing swim. There is plenty of space for everyone.

The immaculate and modern kitchen is a gourmet entertainer's delight. You will love the vast Caesarstone bench tops, convenient breakfast bar and cabinetry offering a multitude of storage space.

Seamlessly flowing from the kitchen onto the expansive deck, relax and enjoy a champagne breakfast in the peaceful surrounds, overlooking the sparkling crystal-clear saltwater pool and landscaped gardens.

Features Include:

- Substantial 617m2 with Low Maintenance Gardens
- Master with ensuite
- 6m x 6m Undercover Outdoor Entertainment Areas on Both Levels
- Formal and Casual Living Areas
- Abundant Built in Storage
- Resort Style Pool
- Reverse Cycle Air Conditioning
- Security and Alarm Systems
- Double Bedrooms
- Workshop

Conveniently positioned 15km from the Brisbane CBD, within close proximity to schools, local cafes, public transport and DFO and Cinemas.

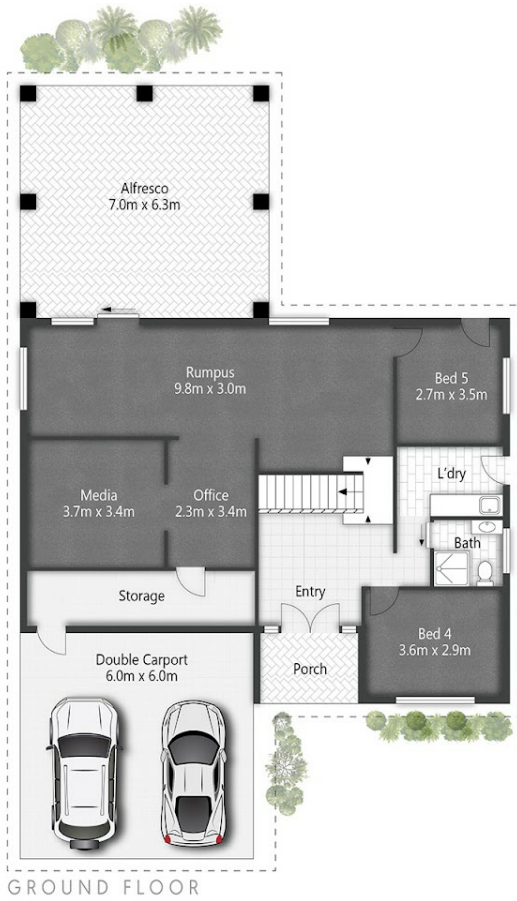
5 BED | 3 BATH | 2 CAR

PRICE:
\$1,170,000

OPEN FOR INSPECTION:
N/A



Helana Kuhl
0447522643
helana@atrealty.com.au
www.atrealty.com.au



8 Canowindra Street **JINDALEE**

5 | 3 | 2 | 355m² | 614m²

All dimensions are approximate; they are subject to errors and inaccuracies and no liability will be accepted. Plans are shown for marketing purposes only.

Disclaimer: Please note this floor plan is for marketing purposes and is to be used as a guide only. All dimensions are estimates only and may not be exact measurements.