



SOLD

CURRENT BID \$1,200,000

For Over 50 High-Res images, videos and virtual tours visit the dedicated property website 55boyshomeroad.com

The Open Negotiation is underway and the property can sell at any time. Current bid \$1,200,000 with 1 qualified buyer. Contact the sales agent immediately to become qualified and avoid disappointment. Open to all buyers, including finance, subject to seller approval.

When it comes to great design and quality builds, this is one of those dream team partnerships that just works in creating truly stunning homes of distinction. Perfectly located on Boys Home Rd to capture the northern sun and amazing views, this could be your new Phillip Island base to enjoy all the region has to offer - everything is close by, from great schools to retail and dining options, cycling tracks, wildlife & coastal walks.

You'll love the flow of this unique and spacious home with its exquisite polished concrete and timber floors, custom cabinetry, staircase and high-quality fixtures and fittings at every turn. The property features commercial grade double glazed windows throughout that compliment the passive solar design elements at play here. A large open-plan living and dining area on the first floor really capitalises on the ocean views and leads out to a large sun terrace, perfect for taking in the summer breeze with cocktails. The kitchen is an understated design masterclass and we LOVE the hidden away butler's pantry and unique stone waterfall bench tops.

Early inspection is highly recommended for this stunning and stylish coastal home.

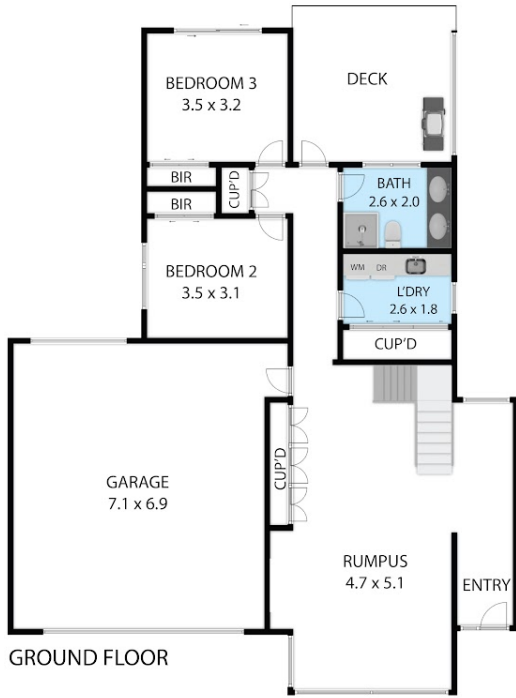
4 BED | 2 BATH | 2 CAR

PRICE:
\$1,205,000

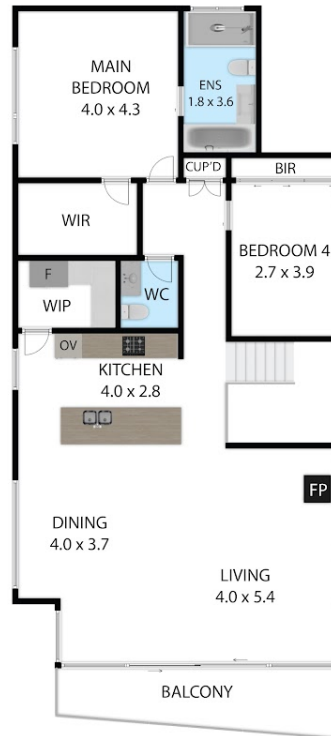
OPEN FOR INSPECTION:
N/A



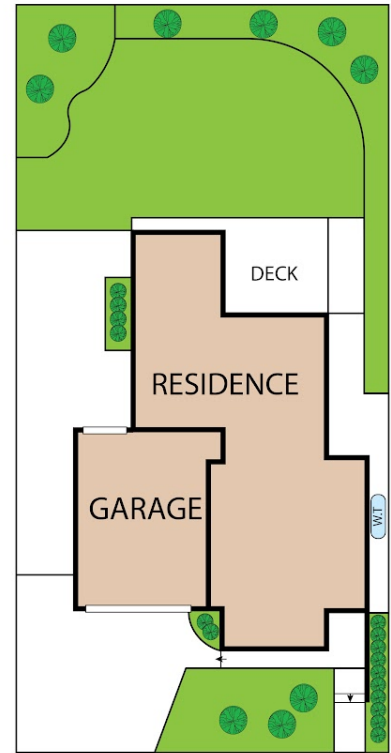
Leo Edwards
0472523445
leo@atrealty.com.au
www.atrealty.com.au



GROUND FLOOR



FIRST FLOOR



55 Boys Home Road, Newhaven 3925

TOTAL APPROX. FLOOR AREA 236 SQ.M

Whilst every attempt has been made to ensure the accuracy of the floor plan contained here, measurements of doors, windows, rooms and any other items are approximate and no responsibility is taken for any error, omission, or misstatement. This plan is for illustrative purposes only and should be used as such by any prospective purchaser.

INVERLOCH
REALTY

@realty

Disclaimer: Please note this floor plan is for marketing purposes and is to be used as a guide only. All dimensions are estimates only and may not be exact measurements.

Leo Edwards
0472523445
leo@atrealty.com.au
www.atrealty.com.au

@realty