



**SOLD**

## STATELY HOME OFFERING PRIVACY AMONG THE GUMTREES - CALL BEN TO INSPECT

Perfect lifestyle property nestled on 2+ acres adjoining Mortimer Bay foreshore reserve, this stately home of 230m<sup>2</sup> offers everything a family could ever want. The kitchen features striking Italian granite benchtops, raked timber ceiling, large pantry and a 900mm oven with gas cooktop. A grand hallway provides access to the separate dining and large lounge with jarrah floors and high ceilings giving an open feeling and emphasize the quality construction of the home. A large inbuilt fireplace works well with the adjoining european style drying room also offering ducted heating to the remainder of the home in winter. 2 reverse cycle heat pumps assist taking the chill off in winter and keeping cool in summer. The grounds feature multiple sheds and animal enclosures and offer a serene natural environment with privacy galore. The master bedroom features a large built-in wardrobe and roomy en-suite. The 2nd and 3rd queen size bedrooms are spacious with built in robes and make the most of the afternoon sun, with the 4th bedroom a great guest room or study. Rare opportunity to purchase such a stately home on over two acres of well developed grounds only a hop skip and a jump to the beach. Please contact Ben Palmer from @realty using the links provided below for further information or a private inspection.

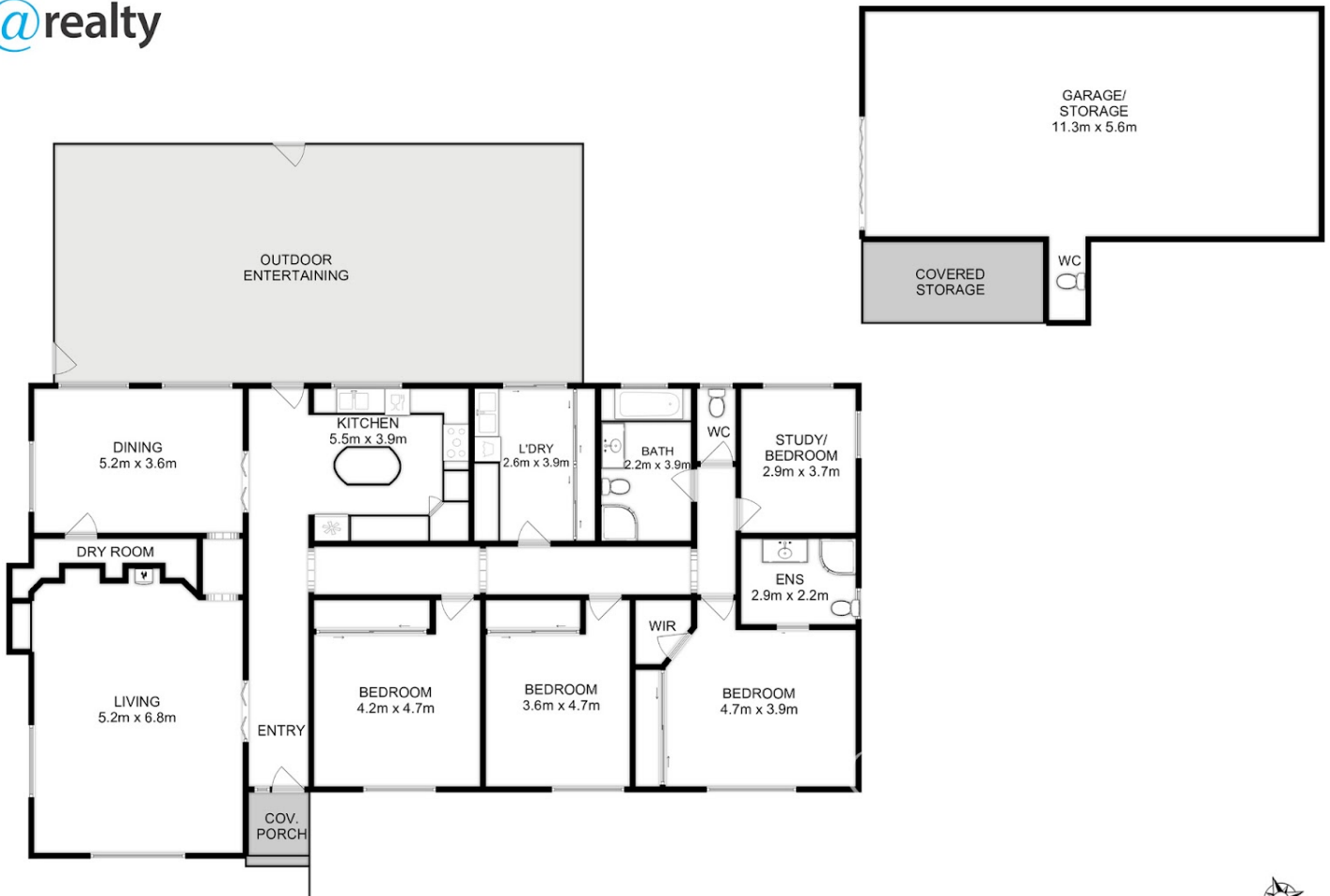
4 BED | 2 BATH | 4 CAR

PRICE:  
\$1,095,000

OPEN FOR INSPECTION:  
N/A



**Ben Palmer**  
**0417556731**  
benpalmer@atrealty.com.au  
[hobarthomes.com.au](http://hobarthomes.com.au)



Total Approx. Floor Area : 295 sqm

Total Approx. House Area : 230 sqm

Total Approx. Garage Area : 65 sqm



All measurements are internal and approximate.  
This plan is a sketch for illustration, not valuation.  
Produced by Open2view.com

Disclaimer: Please note this floor plan is for marketing purposes and is to be used as a guide only. All dimensions are estimates only and may not be exact measurements.