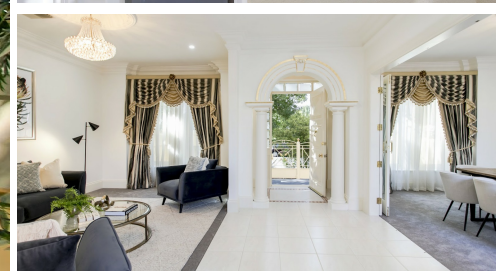


105 FINNISS STREET, NORTH ADELAIDE, SA, 5006



SOLD

GRANDEUR AND ELEGANCE PERSONIFIED IN A HIGHLY SOUGHT AFTER POCKET OF LOVELY NORTH ADELAIDE

UNDER OFFER

This beautiful home has undergone significant upgrades and the end result is simply jaw dropping. With an attention grabbing facade and glamorous kerb-appeal, this architecturally designed stand alone property contains many features that make it stand out from the crowd. From the solid tilt-up concrete structure to the over-sized bedrooms, high ceilings and multiple living choices, this executive family home will appeal to multiple buyer groups. Come with us as we introduce you to just some of the many value propositions on offer here:

The wide light-filled grand entrance with its beautiful archway, pillars, crystal chandelier and high ceilings welcomes you to this gorgeous home

The formal dining room with bi-fold doors is on your left and the formal lounge is to your right, both rooms are complemented by stunning crystal chandeliers.

On to the recently re-modelled open plan kitchen and casual meals area. The kitchen has new stone bench tops and splash back as well as all-new appliances including electric cook-top, oven, range-hood, dishwasher and microwave oven. This area opens up to the enormous courtyard with its striking feature wall, the perfect outdoor entertaining area. Next comes the guest powder room with its new stone bench top, vanity, shower and WC and the compact laundry with new washer and dryer run off the casual meals area.

The spacious office/study with its own split air-con system also has courtyard access. The double garage with remote control door and private lane access complete the lower level.

On to the upper level via the wide staircase. Here we have the rumpus/teenage retreat with its own Juliet balcony.

Now for the master suite, it is absolutely enormous with stacks of cupboard space and built-in robes and it flows seamlessly onto the gorgeous oversized balcony - the perfect place for that

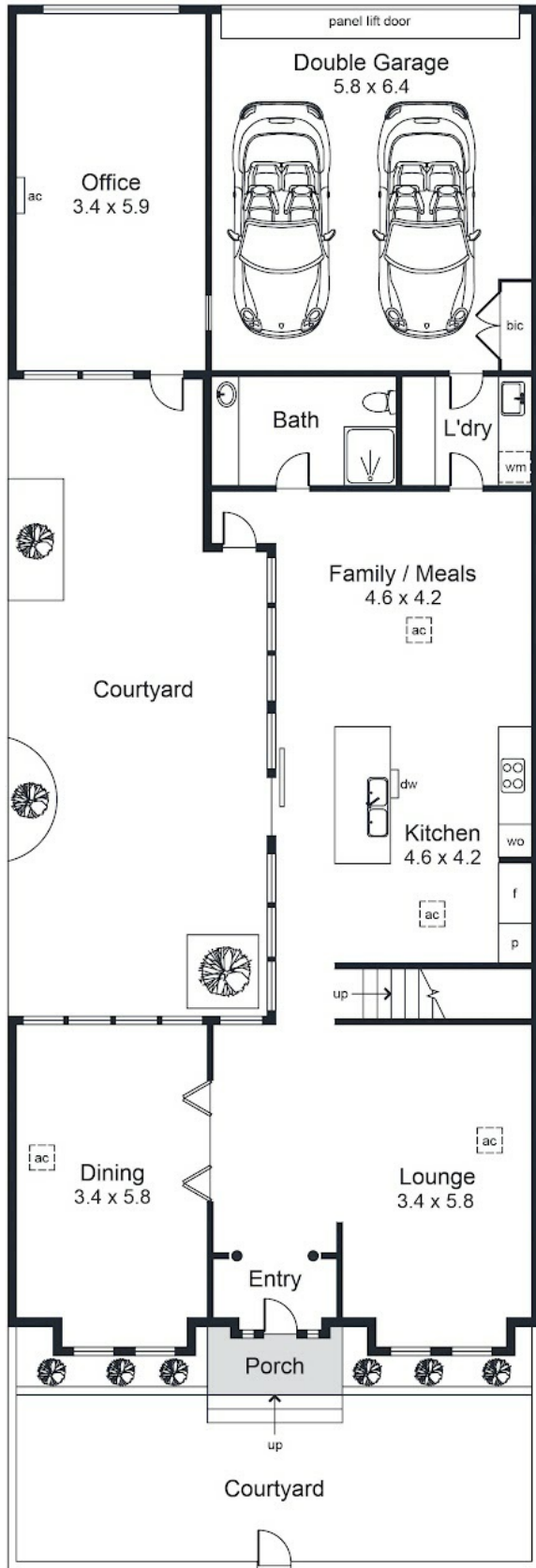
3 BED | 3 BATH | 2 CAR

PRICE:
\$1,850,000

OPEN FOR INSPECTION:
N/A

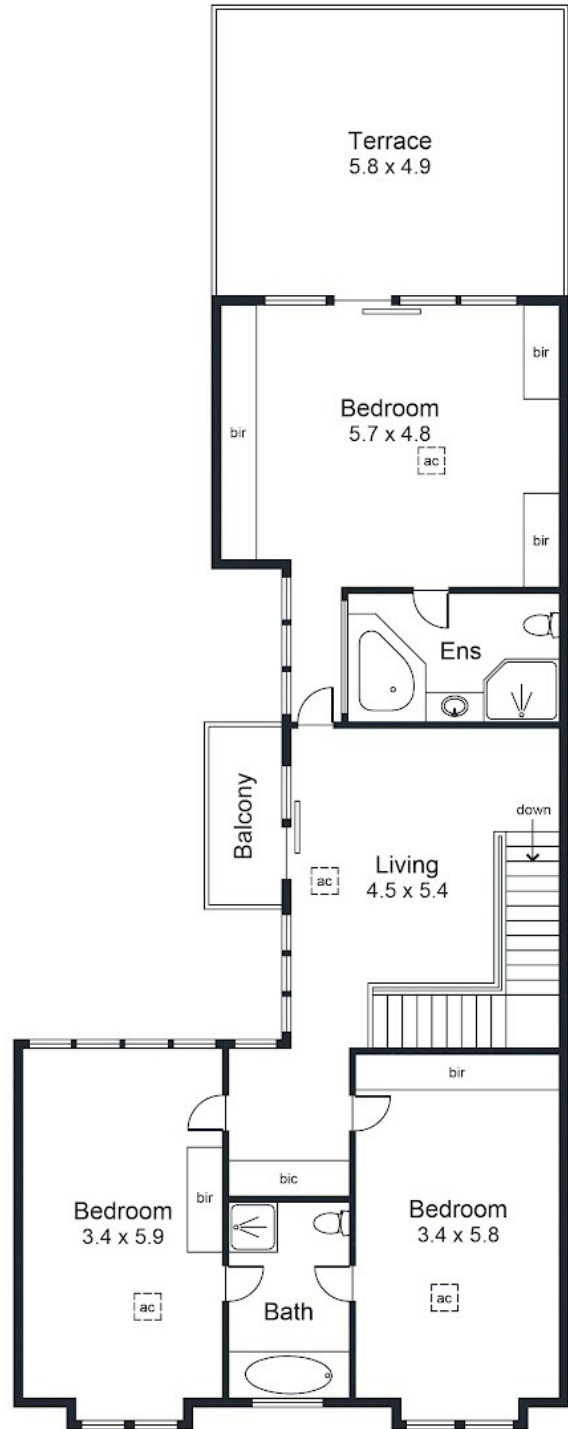


Gerry & Kathy McGuinness
0410531305
teammac@atrealty.com.au
www.atrealty.com.au
RLA: 269823



Ground Floor

Area (Estimate only)	
Lower Living	131.3 m ²



First Floor

Porch	3.8 m ²
Total	322.2 m²

Disclaimer: Please note this floor plan is for marketing purposes and is to be used as a guide only. All dimensions are estimates only and may not be exact measurements.

For illustrative purposes only.
All measurements are approximate