

3/7 BARNETT GROVE, NOBLE PARK, VIC, 3174



**SOLD**

**SOLD SOLD SOLD \$581,000 BY VIET HA 0406 246 384**

Convenience With A Touch Of Serenity

Owner & Director of VIET HA Selling Expert Property Group - Viet Ha is proud to present this lovely Unit, which will appeal to both first-time buyers, investors or own business. This is your chance to own an impeccable, turn-key house in Noble Park. Every imaginable inclusion has been considered to guarantee that this home gives an easy and comfortable lifestyle

**THE GOOD BITS**

Set privately in a delightful and fully renovated, convenient complex, this stylish two-room residence represents the perfect abode for contemporary young families, executive couples, or investors in a sought-after central pocket, moments from craved amenities.

**WHAT YOU'LL LOVE**

Filled with natural light and flaunting a fresh modern feel, its open-plan design showcases a far-reaching living space and open dining room, overlooked by a gorgeous galley kitchen with gas cooking, perfect for whipping up a feast for friends and family enjoying the sealed alfresco dining space to the rear. Relishing a restful ambience, two robed bedrooms include a master bedroom with a walk-in robe and ensuite, further serviced by a family bathroom and separate toilet.

A full-sized laundry, single garage adds the finishing touches to a well-designed home, complemented by a magnificent location within walking distance of Noble Park Shopping Centre, Noble Park stations, parklands and bus and major road arterials

Premier location and is within minutes from Noble Park Shopping Centre, Noble Park Station, local schools, picturesque Ross Reserve, and superb sporting facilities. The Princes Highway, the Eastlink, Homemaker Hubs including IKEA, Harvey Norman and Bunnings, Supermarkets, Monash University, Minaret College, St John Vianney's Primary, Westall Secondary, Wellington Secondary, Heather Hill Primary School, Silverton Primary School, Monash Uni, Athol Primary School, Killester College, Springvale stations, Springvale Library, Noble Park Aquatic Centre, childcare centres and easy freeway access, parklands and bus and train services, and major road arterials

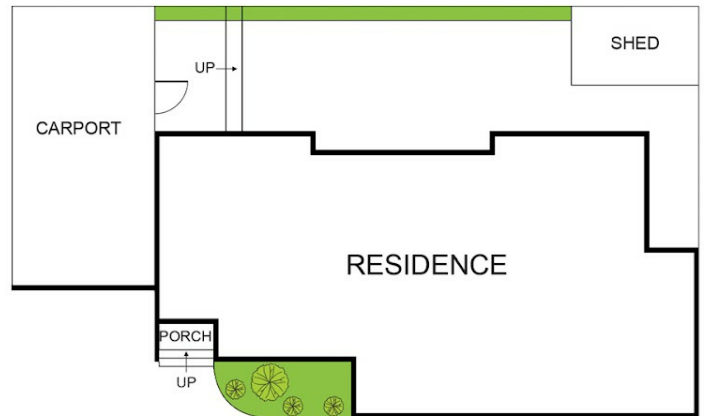
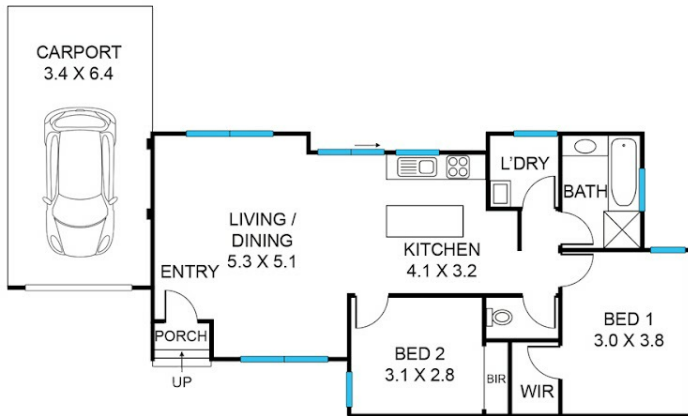
**2 BED | 1 BATH | 1 CAR**

PRICE:  
**\$581,000**

OPEN FOR INSPECTION:  
N/A



**Viet Ha**  
**0406246384**  
viet@vietha.com.au  
vietha.com.au



### 3/7 Barnett Grove, Noble Park

Disclaimer: This floorplan is for illustration purposes only and no warranty is given to its accuracy. Purchasers are advised to carry out their investigations.

Disclaimer: Please note this floor plan is for marketing purposes and is to be used as a guide only. All dimensions are estimates only and may not be exact measurements.