

# SOLD

## PRICE REDUCTION - RENOVATORS DREAM!!

If you are looking for your next project, this is the home for you. Ready to move into with lots of potential to turn into your forever home, this timber home is situated on a fully fenced 779m<sup>2</sup> corner allotment with two street frontage, a cladding exterior and a tiled roof. The town of Pittsworth is located in the heart of the Darling Downs in a rural community, surrounded by various agricultural industries, including grain, cotton, cattle and dairy farms. It is located approximately 40km west of Toowoomba and within a 2-3 hour drive to Brisbane and the Sunshine and Gold Coast, which has some great scenic drives to get to these destinations. Excellent position opposite the Bowls Club and within a 10-minute walking distance to shops, including Woolworths, schools and parks. There is also the convenience of a bus that runs daily into Toowoomba for shopping and private schools.

Some of the hard work has been done for you with a spacious main bedroom with a ceiling fan, two other good size bedrooms, a large air-conditioned lounge room and a second spacious living area. The bathroom has a shower over a corner spa, a vanity unit, and a wall storage cabinet. The modern kitchen has a two-pack finish, an upright stainless steel stove with plenty of bench and cupboard space, and a box air conditioner. There is a separate laundry and toilet off the kitchen located near the back entrance to the house. A covered outdoor area with cement flooring is perfect for summer entertaining. A single lock-up garage with an adjoining single carport is located at the back of the property, along with a bore.

Features include:

- Bore
- Gas Oven
- Ceiling Fans
- Garden Shed
- 2-pack Kitchen
- Rainwater Tank
- Air Conditioning
- Fully Fenced Yard
- Stainless Steel Stove
- Electric Hot Water System
- Covered entertainment area

This is the perfect home for first home buyers or the handyman. Call now for a private inspection

3 BED | 1 BATH | 2 CAR

PRICE:  
\$279,000

OPEN FOR INSPECTION:  
N/A



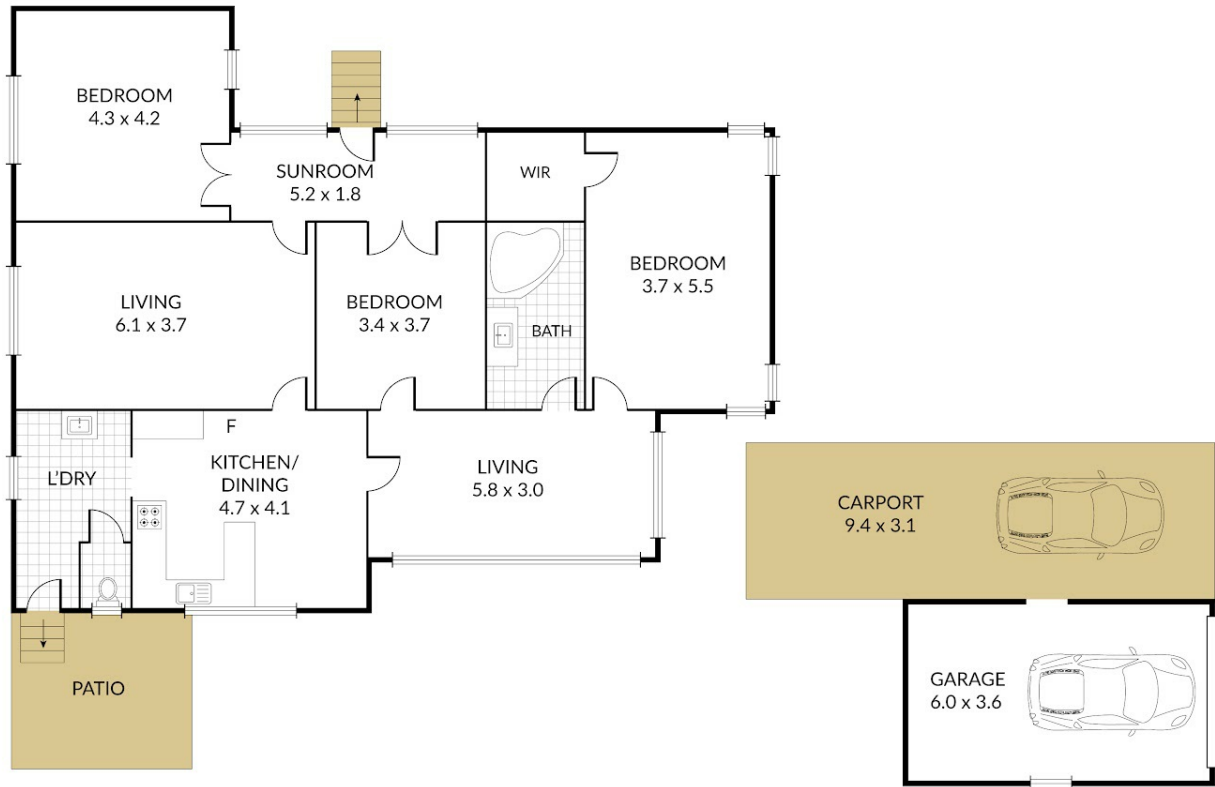
**Robert Cox**  
**0422841777**  
robertcox@atrealty.com.au  
Tyme Real Estate

Internal 159m<sup>2</sup> External 41m<sup>2</sup> Total 200m<sup>2</sup>

17 Weale Street, **Pittsworth**



3 x 1 x 2 x



NOTE: Every precaution has been taken to verify the accuracy of the above details. However, prospective purchasers are advised to make their own enquiries.

Disclaimer: Please note this floor plan is for marketing purposes and is to be used as a guide only. All dimensions are estimates only and may not be exact measurements.

**Robert Cox**  
0422841777  
robertcox@atrealty.com.au  
Tyme Real Estate

