



SOLD

INVESTORS OR FIRST HOME BUYERS LOOK NO FURTHER! THIS HOME ✓ 'S ALL THE BOXES.

This quaint single level free-standing home on a 720m square block, rests peacefully amongst the quiet surrounds of Teasdale Drive ✓
3 good sized bedrooms, each with built-in robes and 2 bathrooms (the master with an ensuite) ✓
Polished wooden floorboards and stainless-steel fans throughout ✓
Spacious modern kitchen boasting a plumbed stainless steel French door fridge with a 6-burner gas cooker, electric oven and island bench that flows into the family room and leads onto the spacious wooden deck and entertaining area ✓
Lounge and dining rooms are combined with a cosy wood fired heater for those chilly nights ✓
Magnificent French doors lead out to an expansive covered deck with wooden outdoor fans and overlooking a tropical pool, maintained gardens and tranquil mountain views. Perfect for alfresco dining and entertaining ✓
Ample laundry space is located at the back of the house and overlooking the tropical gardens, barbeque area and garden shed ✓
A converted garage now provides a flexible room for additional space with a storage area ✓
The house frontage has been landscaped ready for planting your favourite natives. ✓
Plenty of parking space ✓
Close to Shopping Centres, Schools, Nerang forest, Public swimming facilities and bike riding tracks ✓

Advertising Disclaimer:
We have in preparing this information used our best endeavors to ensure that the information contained herein is true and accurate, but accept no responsibility and disclaim all liability in respect of any errors, omissions, inaccuracies or misstatements that may occur.
Prospective purchasers should make their own enquiries to verify the information contained herein.

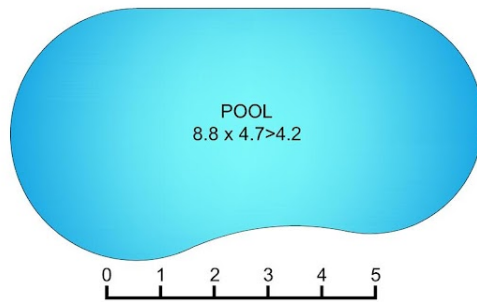
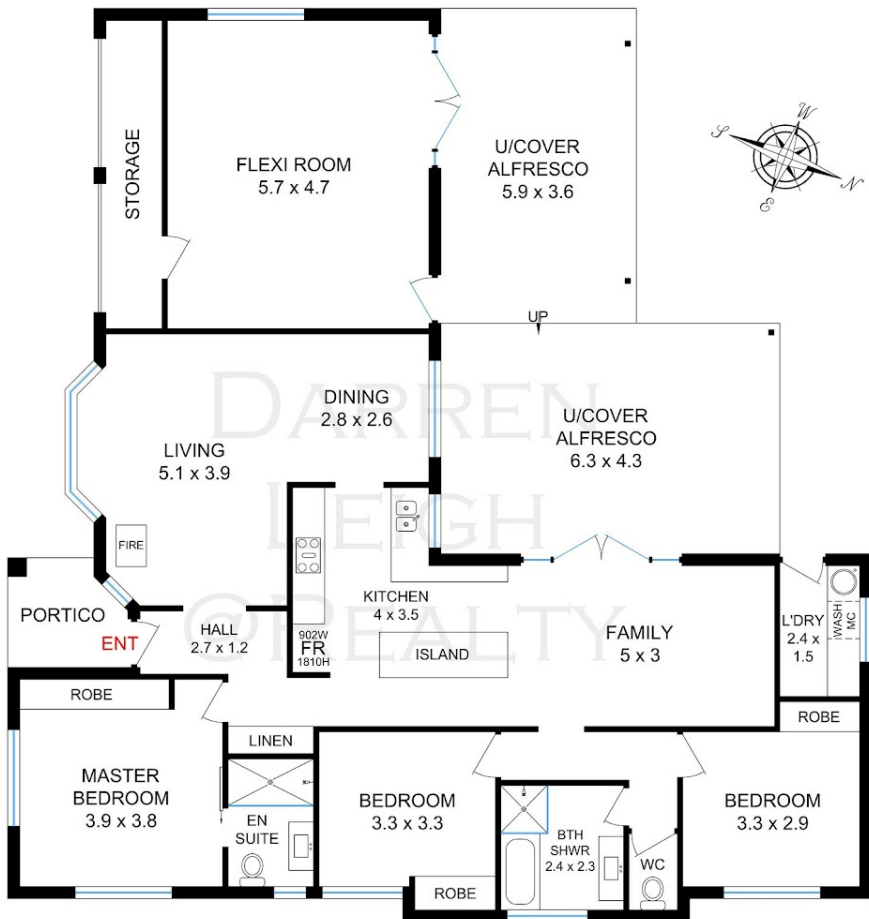
3 BED | 2 BATH | 2 CAR

PRICE:
\$820,000

OPEN FOR INSPECTION:
N/A



Darren Leigh
0422832537
darren@atrealty.com.au
www.atrealty.com.au



Gold Coast Floor Plans

Scale in Meters, Dimensions are accurate. Whilst every care has been made we cannot guarantee its 100% accuracy and interested persons should rely on their own enquiries

Land size 720m²

Ceiling Height 2.4m-2.5m

Internal Floor Area 153.3m² or 16.5sqs

Alfresco Areas 48.4m²
Porch 4.2m²

Total Floor Area 205.9m² or 22.2sqs

42 TEASDALE DRIVE,
NERANG 4211

Marketed by Darren Leigh

@realty

Tel: Darren 0422 832537

Disclaimer: Please note this floor plan is for marketing purposes and is to be used as a guide only. All dimensions are estimates only and may not be exact measurements.