

478 TWEED VALLEY WAY, SOUTH MURWILLUMBAH, NSW, 2484



SOLD

UNDER CONTRACT

Offering an elevated location in an established suburb, this tidy easy care home is centrally located just 5 minutes drive or an easy flat 15 minute walk to the cbd. Murwillumbah offers fabulous outings whether it be a stroll through the M-arts area , a tasty pub lunch at the river view or coffee and cake catch up with your friends.

Its also only a 5 minute walk to the Art Gallery or just next door is fresh produce for your dinners from Guinea's fruit and veggie store.

If your looking for independence but very low maintenance living with a great outlook over fields to the mountains, then this one would suit perfectly.

A motorised chair lift is in place for anyone who's needs would suit this extra feature.

The home is also removable which would open up options to sell the removable home then build your dream home.

Contact us to organise your private inspection.

Northern Rivers Property Group has obtained the information on this property from what we believe are reliable sources and have no reason to doubt its accuracy however we cannot guarantee its exactness. Prospective purchasers are advised to execute their own enquiries. Please note the photos are a representation of the property.

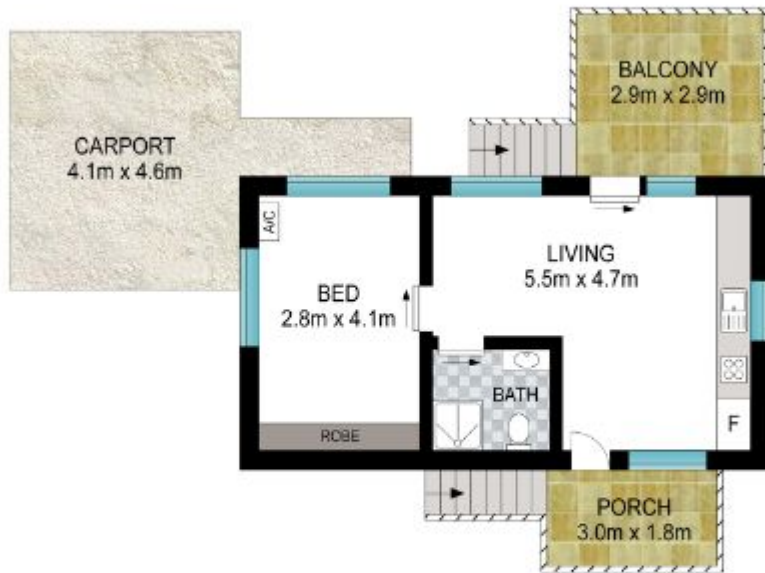
1 BED | 1 BATH | 2 CAR

PRICE:
\$385,000

OPEN FOR INSPECTION:
N/A



Adrianna Jenkins
0422265871
adrianna@atrealty.com.au
Northern Rivers Property



Scale in metres, indicative only. Dimensions are approximate. All information contained here is gathered from sources we believe to be reliable. However, we cannot guarantee its accuracy and interested persons should rely on their own enquiries.

INT: 39 m²
EXT: 15 m²



478 Tweed Valley Way, South Murwillumbah



Disclaimer: Please note this floor plan is for marketing purposes and is to be used as a guide only. All dimensions are estimates only and may not be exact measurements.

Adrianna Jenkins
0422265871
adrianna@atrealty.com.au
Northern Rivers Property

