



SOLD

THE EASY LIFE!

INSPECTIONS BY APPOINTMENT ONLY. ENQUIRE NOW TO MAKE YOURS!

If location and convenience are important to you then look no further than 1341 Mountain Highway, The Basin! Enjoy a lifestyle that's filled with Sunday morning coffees, Friday night cocktails and cheeky trips to the local bakery from a residence that is perfectly situated within a stone's throw of The Basin shops!

The character home positioned on 1013m² and set back from the road, backs onto acreage and is ideal for a growing family. Comprising:

- *Three generous bedrooms plus study or fourth bedroom, including two master bedrooms that share a full ensuite.
- *Smaller second bathroom.
- *Spacious family room with wood fired Coonara.
- *Separate formal dining adjacent to well-appointed kitchen with gas cooking and plenty of cupboard space.
- *An easy access to a full-length rear deck boasting beautiful views and overlooking a mostly level rear yard.

In addition to that, the lock-up three car garage with connected storage room is perfect for those with additional toys, home gym or just simply need a lot of storage space.

Other features include, gas ducted heating, split system AC, polished floorboards, an abundance of additional space under the home for storage and much more!

All this with easy access to local bus services, and within The Basin Primary School and Boronia K-12 College zones, this is truly not one to miss!

3 BED | 2 BATH | 3 CAR

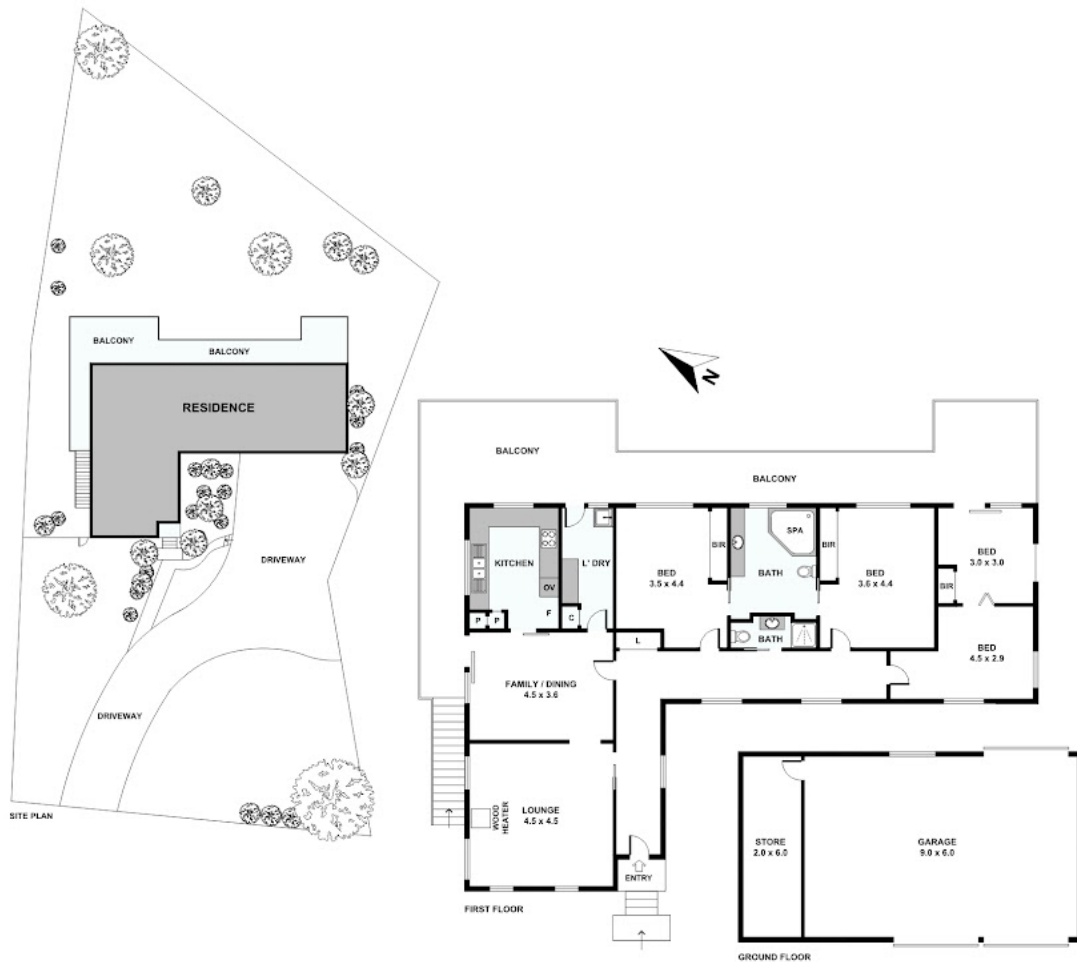
PRICE:
\$825,000

OPEN FOR INSPECTION:
N/A



Scott Collins
0499005265
scottcollins@atrealty.com.au
scottcollins.com

1341 Mountain Highway, The Basin



Disclaimer: Please note this floor plan is for marketing purposes and is to be used as a guide only. All dimensions are estimates only and may not be exact measurements.