



**SOLD**

## PERFECT HOME OR HOLIDAY HOME IN THE HEART OF ORFORD

\*\*\*Available for viewing over the Christmas New Year break, Call Ben to organise a time!\*\*\*

A great spot to live, retire or holiday!

This lovely sunny home is centrally located in Orford, only a short walk to the primary school, Millington's Beach, local IGA and Wattlebanks Cafe.

Constructed of low maintenance brick and featuring 3 generously sized bedrooms, two with substantial built-ins, bathroom with bath and separate shower, separate toilet and good sized laundry with external access, the home makes for easy living. The open plan kitchen and dining is well equipped and offers easy access to the rear landscaped yard. The front lounge enjoys the morning to midday sun and offers a lovely easterly aspect with glimpses of the bay. The front Deck a great place to soak up the sun and further enjoy the easterly aspect.

The rear of the home is well landscaped with paved dining and entertaining areas accessed from the kitchen and dining a great spot to enjoy a quiet summer evening with family and friends.

Centrally located, low maintenance homes of this nature are hard to come by in Orford, call Ben now for a private inspection.

Features:

- 3 Bedroom, low maintenance home
- Private rear yard
- Well landscaped and fenced grounds
- Sunny easterly aspect
- less than 500m to beach
- less than 200m to the local Primary School
- 700m to shops and cafe
- 3 off street parks for cars and boats, fully fenced.

Rates approx \$1420 annually

Taswater approx \$1050 annually

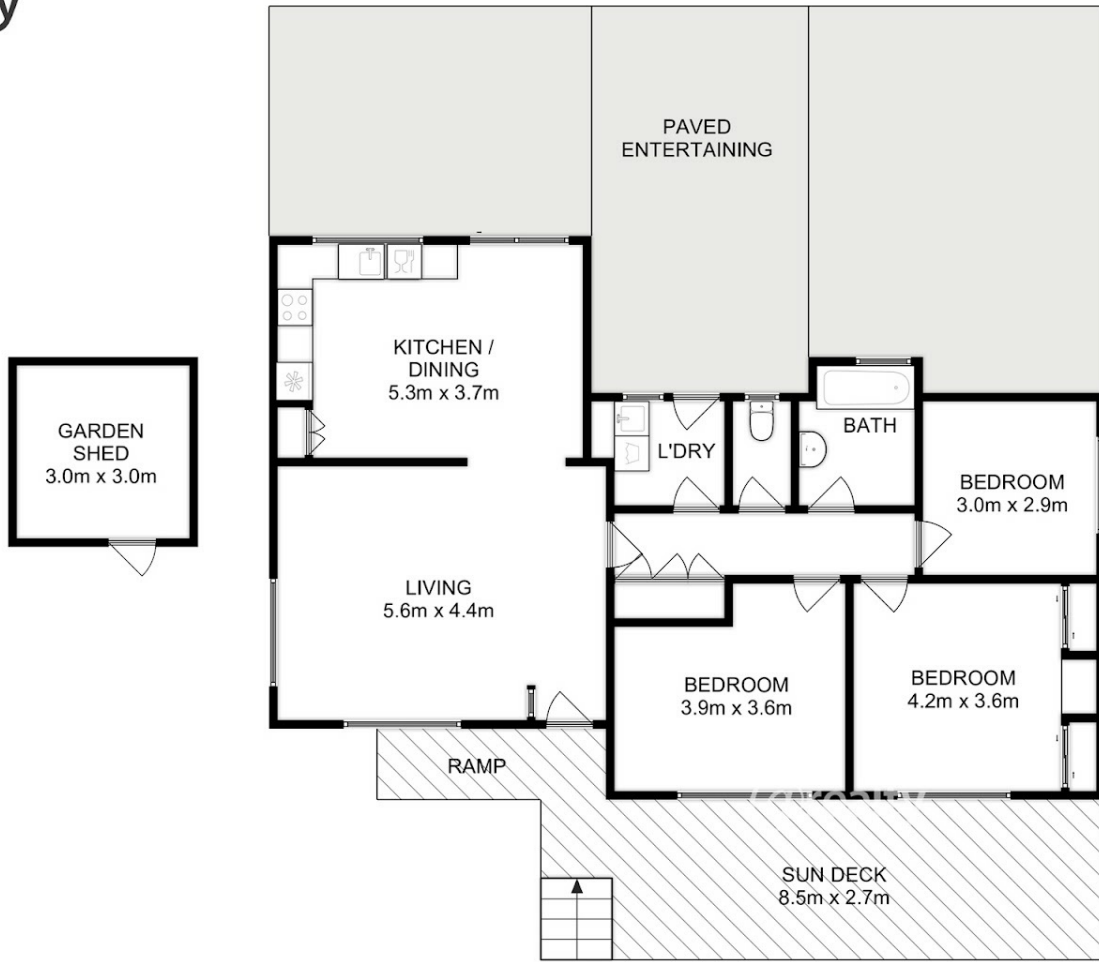
3 BED | 1 BATH | 0 CAR

PRICE:  
\$575,000

OPEN FOR INSPECTION:  
N/A



**Ben Palmer**  
**0417556731**  
benpalmer@atrealty.com.au  
[hobarthomes.com.au](http://hobarthomes.com.au)



Total Approx. Floor Area : 112 sqm  
Total Approx. Courtyard Area : 9 sqm

All measurements are internal and approximate.  
This plan is a sketch for illustration, not valuation.  
Produced by Open2view.com

Disclaimer: Please note this floor plan is for marketing purposes and is to be used as a guide only. All dimensions are estimates only and may not be exact measurements.