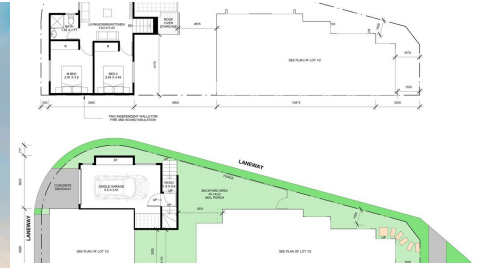


BLUEBELL 2/30 MASON ROAD, BOX HILL, NSW, 2765



FOR SALE

SIGNATURE BLUEBELL K STUDIO

- a. 800 metres from the upcoming Box Hill Town Centre.
- b. Located between numerous parks and sporting fields and offers many leisure and recreational options for families.
- c. Approx. 7 mins to the new Rouse Hill Metro Station and Rouse Hill Town Centre.
- d. In the catchment of approx. 7 mins to Rouse Hill Public School, Rouse Hill High School and Rouse Hill Anglican College.
- e. Proximity to retail hubs
- f. Approx. 7 mins to upcoming Rouse Hill Public Hospital.

Inclusions:
Turnkey finishes
All site costs included
Driveway, fencing & landscaping
Air-conditioning
900mm stainless steel appliances (rangehood & cooktop)
Dishwasher & oven
20mm stone benchtop
Carpets & floor tiles
Flyscreens, letterbox, clothesline
Security alarm & remote control
garage doors

2 BED | 1 BATH | 1 CAR

PRICE:
Contact Agent

OPEN FOR INSPECTION:
N/A



Jeremy Yuen
0412406039
jeremy@atrealty.com.au
www.atrealty.com.au