



SOLD

AFFORDABLE CHARACTER FAMILY HOME.

Affordable Character Family home or Investment

Inspection will impress as this home has been beautifully renovated and the new owner needs only to walk in and enjoy.

This character solid stone construction is located close to the Mount Gambier City business district.

Located on a large slightly elevated allotment, measuring 15.2 m frontage and a whopping 55.1 metres depth 835 sq/m fantastic for the gardener, pets, or room for the children to play.

At the front of the home, you are greeted with a covered veranda ideal for greeting guests or maybe a couple of chairs so you can sit, enjoy a drink, and watch the world go by.

Step inside and you are greeted to a formal lounge 2nd living area with polished floorboards, high ceilings.

The main bedroom at the front of the home, with 3 other bedrooms 2 with BIR, one would be ideal as a study or nursery.

Security blinds at the front of the home keeps it quite and cool in the summer months.

A brand-new kitchen with step in pantry, dishwasher new stainless-steel appliances and breakfast bar.

Just off the kitchen is the meals area that opens onto a large family room plenty of room for the whole family, with split system air conditioning with heat shifter, enabling to keep the entire home the right temperature all year round.

Sliding doors lead to a large patio area that flows on to a huge backyard, room to create a great family area.

Double carport with remote roller door keeps your vehicles safe and protected, plus a stone garage, great as a car workshop or maybe a mancave, very popular these days.

20 panel solar system keeps those expensive power bills to a minimum.

Rental Appraisal \$350 to \$380 per Week

Freshly painted, new laundry, new floor coverings, ceiling fans, updated bathroom, makes this home a must to inspect

RLA 269823

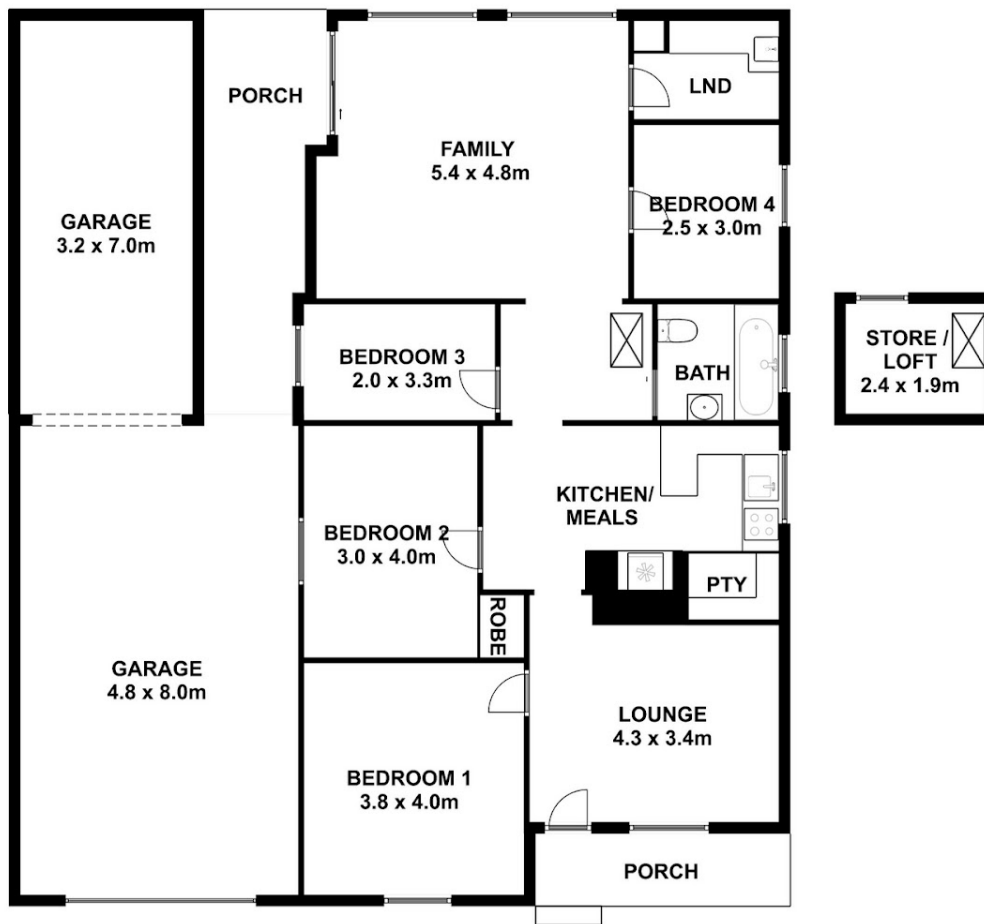
4 BED | 1 BATH | 3 CAR

PRICE:
\$360,000

OPEN FOR INSPECTION:
N/A



Peter Dempsey
0418854393
peterdempsey@atrealty.com.au
peterdempseyatrealty.com
RLA: 269823



This drawing is for illustration purpose only. All measurements are approximate only and information intended to be relied upon should be independently verified.

Disclaimer: Please note this floor plan is for marketing purposes and is to be used as a guide only. All dimensions are estimates only and may not be exact measurements.