



SOLD

PRIVATE GOLF COURSE FRONTAGE 4 BED VILLA - VERY RARE OPPORTUNITY

Here is your opportunity to secure a premium Golf frontage home.

Located within the Eastern (hotel side) of the Royal Pines resort positioned amongst the manicured grounds of the South Shields precinct this 4-bedroom Golf Course villa will certainly impress having just been listed for immediate sale.

Boasting its own private entry "lane" and surrounded by parkland this property is without doubt one of the better positioned villas within the entire Royal Pines estate.

If you are looking for a home that is a little special with fantastic views, a sense of space and seclusion then #2112 South Shields should be viewed.

The 4th bedroom/study is located on the ground level as is the three separate living areas with access out onto the external covered entertaining options.

The partly renovated well designed kitchen overlooks the pool area with great vistas of the Golf course and parkland that surrounds the home.

The upper-level houses the three good size bedrooms with the extremely generous master (renovated) boasting a large balcony, spacious walk-in robe with en-suite with bath. Once again, the vistas of the Golf course will certainly impress.

Being 1 of only the 2 villas at this location the home has a lovely open feel with the surrounding courtyard, gardens and landscaping creating a very private and peaceful setting.

Unique to this property is the double car accommodation and separate buggy space available to the owners with plenty of visitor parking basically at your doorstep.

Properties such as #2112 are rarely available and as there are only a handful of villas that offer direct golf frontage here at Royal Pines, we are certainly not expecting this one to last too long.

Simply put, a great opportunity to purchase direct Golf course frontage without the normal golf

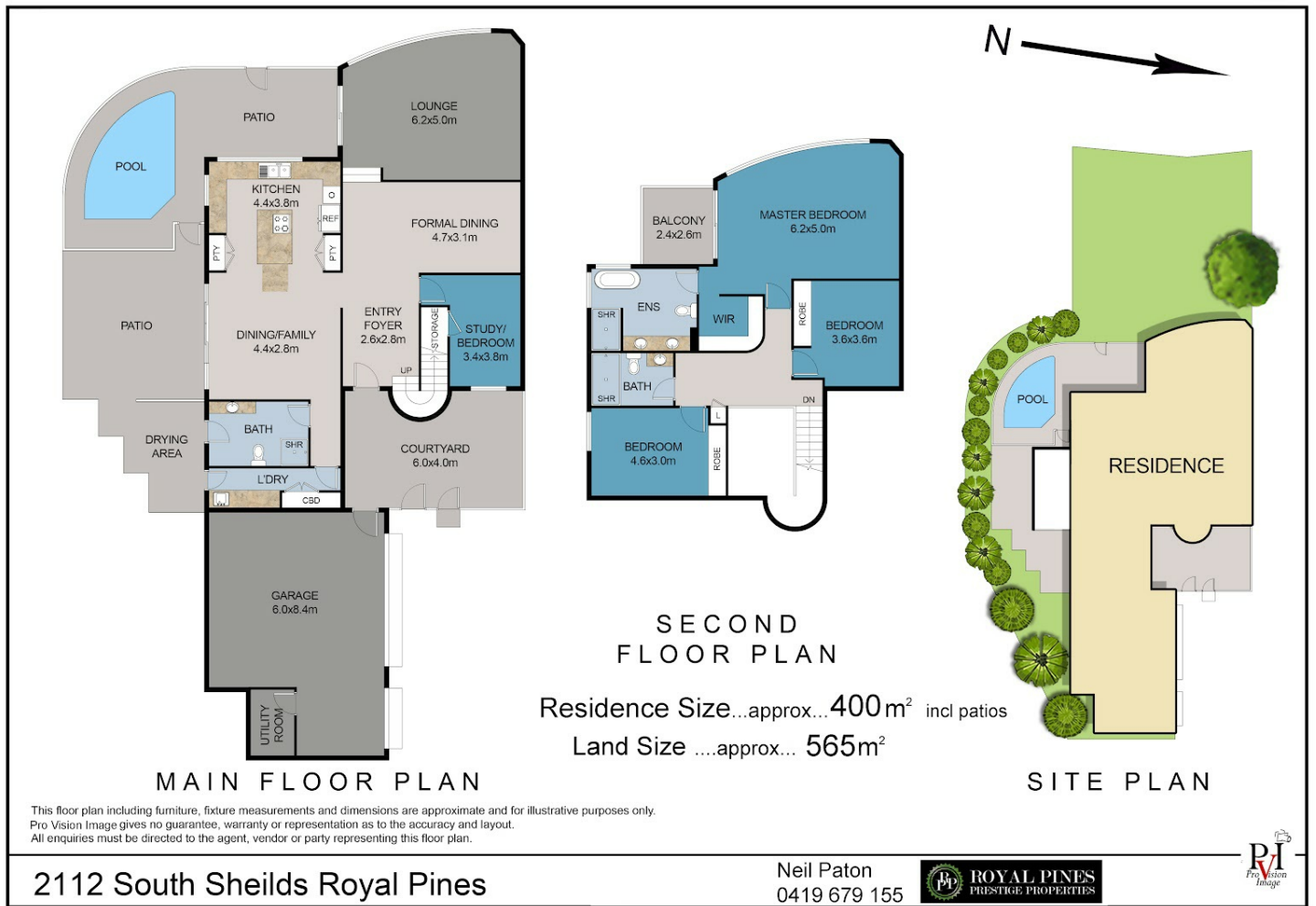
4 BED | 3 BATH | 3 CAR

PRICE:
\$1,153,100

OPEN FOR INSPECTION:
N/A



Neil Paton
0419679155
neilpaton@atrealty.com.au
www.atrealty.com.au



2112 South Shields Royal Pines

Neil Paton
 0419 679 155



Disclaimer: Please note this floor plan is for marketing purposes and is to be used as a guide only. All dimensions are estimates only and may not be exact measurements.

Neil Paton
 0419679155
 neilpaton@atrealty.com.au
 www.atrealty.com.au

