

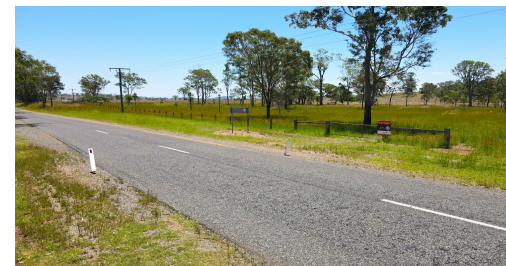
Sold

0  | 0  | 0 

LOT 199 EDWARD STREET, BIGGENDEN, QLD, 4621



Lot 199 Edward St. Biggenden



PRESENTABLE 4.3 ACRE VACANT ALLOTMENT

Minutes to town, this flat 4.3Ac re block on the edge of Biggenden is the perfect opportunity to buy land and build your dream home. It is located just 2 minutes from the township of Biggenden, half hour to Childers and 25 minutes to Paradise Dam for all your Water Sport activities. This land is fully usable, mostly flat 4.3 Acres, fully fenced with timber post and barb wire fencing and small set of cattle yards. This idealic lifestyle block will suit a family or couple who want to run a cow or two, horses or enjoy the serenity of acreage.

Special Features include -

- 1.74 Hectares / 4.3 Acres Vacant semi cleared flat allotment
- Bitumen road frontage
- Zoned - Large Residential
- 3 Phase power passing the front of property
- Walking distance to the main street of Biggenden
- Town water amenities
- Small set of cattle yards & ramp
- Fully fenced property in good condition
- Great location for a laydown area on the edge of town
- Rates approximately \$1000 per 6 months

The Biggenden township is within a minute drive and provides a State School from prep to year 10; a multipurpose health service with hospital; a public swimming pool; various other public services & shops. This is a great location to settle down.

PRICE:
\$150,000

OPEN FOR INSPECTION:
N/A

Ty Dan // 0437226831

ty@widebayregionalestate.com.au // www.widebayregionalestate.com.au

