

**SOLD**

## AMAZING VIEWS, RESORT-STYLE FACILITIES

Capturing uninterrupted sweeping views of the neighbourhood of Woolloongabba and Stones Corner, this modern 1 bedroom apartment on level 5, is sure to impress first home buyers, downsizers and investors alike.

With direct access to the Buranda Busway & Buranda Train Station it is the best of both worlds for public transport. Brisbane City Bikeway also has direct access and a café right on its doorstep, this wonderful apartment also boasts close proximity to the Princess Alexandra and Greenslopes Private hospitals. Stones Corner Village, Buranda Village Shopping Centre, the spectacularly remodelled Hanlon Park and a multitude of shops and dining options are also just a short walk away.

Being in the Buranda State School, Brisbane South State Secondary College and Brisbane State High School catchment areas, this flawless property is also minutes away from Villanova College, Saint James Catholic Primary School and Saint Joseph's Primary School.

### Features include:

- \* Great sized bedroom with built in robes and fantastic southerly views
- \* Full U shape modern kitchen with stone bench-tops, stainless steel appliances & dishwasher
- \* Air-conditioning in both the bedroom and the living area
- \* Internal laundry space
- \* Resort style facilities – concierge desk and communal rooftop duel BBQ & entertaining areas with swimming pool, two spa's and a sauna. The recreation area spans the entire rooftop and has uninterrupted 360 including city views.
- \* 1 Secure car space
- \* Currently renting for \$440 per week. Lease end date 31/07/2023.
- \* The body corporate fees are approximately \$2800 per annum and the rates are approximately \$1800 per annum.

This unit really does have it all – call to arrange an inspection today!

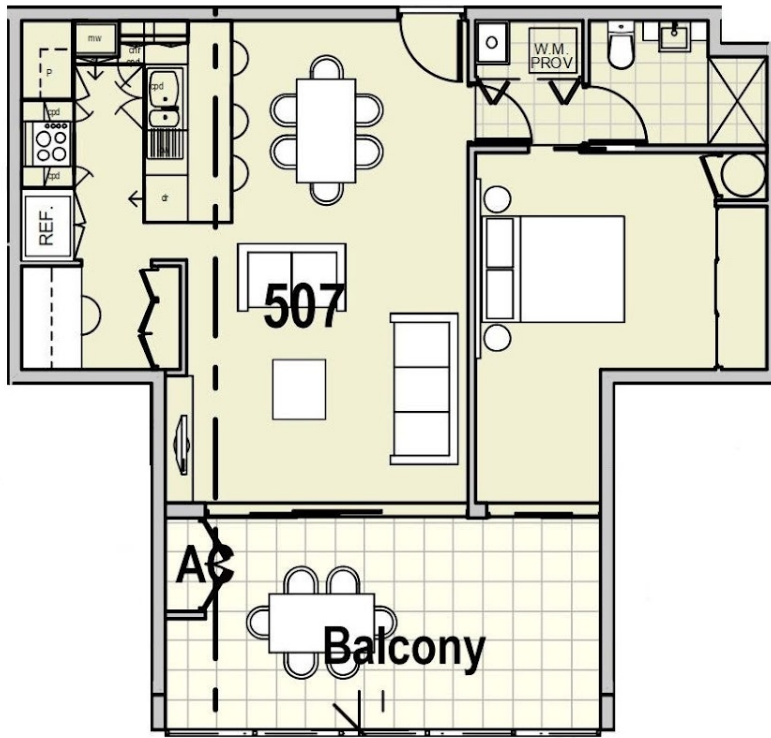
1 BED | 1 BATH | 1 CAR

PRICE:  
\$426,500

OPEN FOR INSPECTION:  
N/A



**Adrian Matthews**  
**0403171644**  
adrianmatthews@atrealty.com.au  
[www.atrealty.com.au](http://www.atrealty.com.au)



Disclaimer: Please note this floor plan is for marketing purposes and is to be used as a guide only. All dimensions are estimates only and may not be exact measurements.