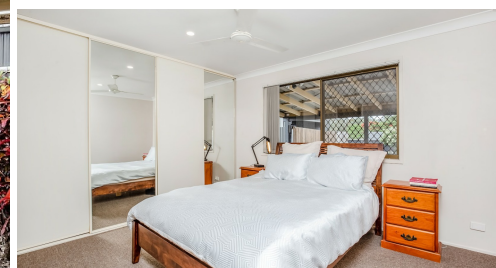


1 KALBARI COURT, WORONGARY, QLD, 4213



FOR LEASE

FAMILY FRIENDLY HOME - MASSIVE CORNER BLOCK WITH PRIME LOCATION - 714 M²

This solid single level brick and tile home is perfect for a young family wanting plenty of space in the yard for the kids to play, ideal for tradies with side access and two large sheds to store your tools or downsizers who love their garden and want room to house their boat, caravan or JetSki.

An abundance of space to accommodate multiple vehicles and primely positioned opposite the park for an active lifestyle.

This home is cute and cosy with near new air conditioning, a light filled open plan living room and functional kitchen and two way bathroom with separate laundry area as well for convenience.

There are three double bedrooms with ample storage and best of all the undercover entertainment area - basically another large room outside for year's round living.

Close proximity to Worongary Shopping Village, Robina Town Centre and easy access to the M1 and a variety of great variety of quality schools nearby.

Move in ready so be quick!

3 BED | 1 BATH | 6 CAR

PRICE:
\$830 per week

OPEN FOR INSPECTION:
N/A



Sandra Sherratt
0411298493
sandrasherratt@atrealty.com.au
www.atrealty.com.au