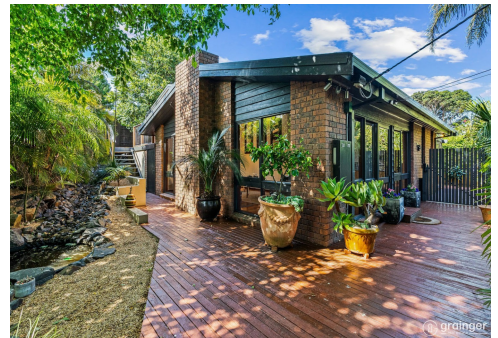


8 PRION CLOSE, BLIND BIGHT, VIC,  
3980



# FOR SALE

## YOUR COASTAL FAMILY HAVEN AWAITS

5 | 3 | 2

Immerse yourself in this secluded coastal gem with its private zen ambiance and abundance of space offering a variety of opportunities, such as extended family accommodation, a business venture or idyllic holiday rental.

Situated on a private 938m2 (approx.) allotment in a family-friendly neighbourhood, this charming and character filled tri-level home boasts 5 generous sized bedrooms with robes, 3-bathrooms and multiple living zones for the whole family.

Follow the pathway via the tranquil resort-style gardens to your very own private oasis with a solar-heated swimming pool, paved courtyards and decked entertaining area, all of which connect indoor & outdoor living together.

The high-vaulted ceiling & large wrapping windows in the formal lounge & dining offer a true sense of space adorned by exposed timber beams and a cosy gas fireplace. The well-equipped kitchen includes electric cooking, dishwasher, walk-in pantry, ample bench & storage space adjoined by the separate family-living zone and a downstairs rumpus/5th bedroom and private bathroom with it's own private internal entry access via glass sliding doors - the opportunities are endless for the astute new homeowner! Ideal for extended family or a guest suite, Holiday rental, Air BnB' and the list goes on...

PRICE: Contact Agent

OPEN FOR INSPECTION: N/A .

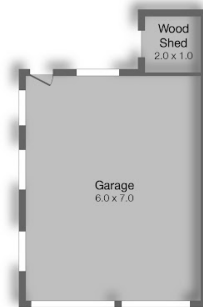
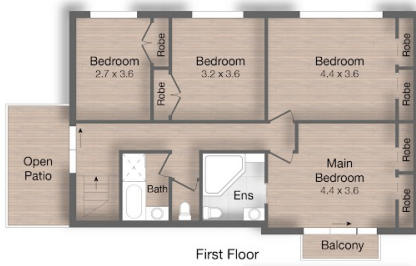
Emily Grainger | 0421929013 | [emily@grealestate.com.au](mailto:emily@grealestate.com.au) | [www.grealestate.com.au](http://www.grealestate.com.au)



# 8 PRION CLOSE, BLIND BIGHT, VIC, 3980

8 Prion Close, Blind Bight

 4 Bedroom  3 Bathroom  2 Car Garage



Disclaimer: Whilst every effort has been made to ensure the accuracy of these particulars, no warranty is given by the vendor or the agent as to their accuracy. Interested parties should not rely on these particulars as representations of fact but must instead satisfy themselves by inspection or otherwise.

Emily Grainger | 0421929013 | [emily@grealestate.com.au](mailto:emily@grealestate.com.au) | [www.grealestate.com.au](http://www.grealestate.com.au)