

SOLD

CITY AND POOL VIEWS

Whether looking to invest or to accommodate a son or daughter about to start university in 2023 this is a unique opportunity to secure a well-positioned apartment in a hugely popular complex. Located on level 4 in Tower 1 of the prestigious Rivers on the Park complex, it has a north-east facing balcony for alfresco living with views of the city skyline and the pool below. High ceilings and a good layout create an open spacious feel to this apartment which is filled with natural light. The decor is neutral with white cabinetry and granite bench tops, and with separate dining and living areas, furniture arrangement is easy. It has secure parking, secure access to the building and each floor, CCTV monitoring and friendly, efficient on-site management.

Rivers on the Park is one of Brisbane's finest residential developments offering well maintained resort style facilities. The tropical gardens are immaculately maintained creating lovely areas to overlook and enjoy while the spacious poolside area provides a delightful spot to relax. With a full-size tennis court, well equipped gym, hydrotherapy pool and sauna you can save money on gym memberships.

The lifestyle benefits are also enhanced by the surrounding facilities: cycle and walking tracks along the river, adjacent parklands, proximity to shopping and café precincts and transport services – train, bus and City Cat. With the Wesley Hospital next door it is an ideal location for a base for hospital staff requiring easy and quick access at all hours of the day or night. Qualities such as these will ensure the ongoing desirability of the complex and the surrounding area.

Note: Photos show virtual furniture to respect tenant's privacy. Vacant possession is available after January 9.

Apartment Features -

- * 67 sqm - Internal 54 sqm plus 13 sqm of balcony
- * Neutral and timeless colour palette
- * Stainless steel appliances - dishwasher, under bench oven, gas cooktop and granite benches
- * Air-conditioned lounge enjoys open north-east aspect
- * Large balcony with view of the city and overlooking the pool
- * Bedroom with walk through robe, ceiling fan and balcony access
- * Two-way bathroom from entry and bedroom with shower and hideaway laundry
- * Secure building access to floor and parking area
- * Single car space

1 BED | 1 BATH | 1 CAR

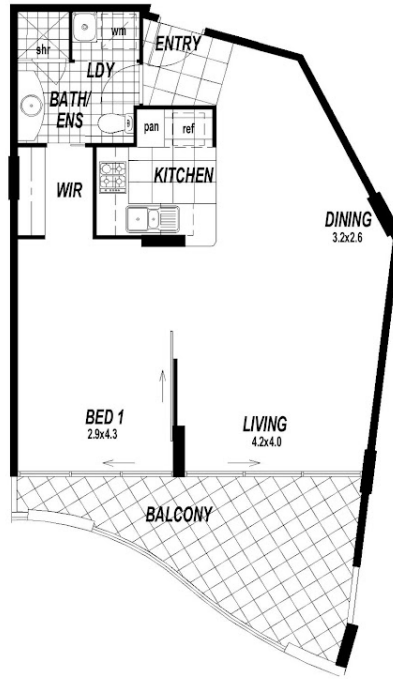
PRICE:
\$394,000

OPEN FOR INSPECTION:
N/A



Sue Barnes
0418988715
suebarnes@atrealty.com.au
www.atrealty.com.au

The Developer reserves the right to make minor alterations to floor plans without notice. Areas are measured to the centreline of all walls including balcony walls and upturns.



LEVELS 2 - 5



STAGE 1

TYPE F1

UNIT NUMBERS 113, 121, 129, 137, 145

AREA

LIVING	54	sq.m
BALCONY	13	sq.m
TOTAL	67	sq.m



5th April 2002



Disclaimer: Please note this floor plan is for marketing purposes and is to be used as a guide only. All dimensions are estimates only and may not be exact measurements.