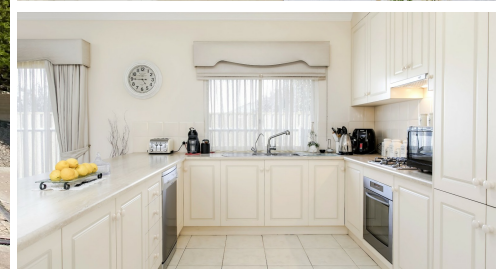
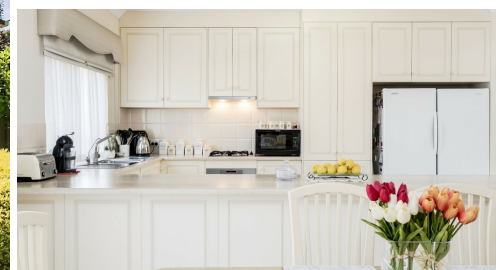


2 KURT STREET, EVANSTON, SA, 5116



SOLD

IMMACULATE FAMILY HOME WITH AMAZING KERB APPEAL

Best Offers By Monday 6 February 2023 at 12 noon (Unless Sold Prior)

Situated in a lovely street and surrounded by similar quality properties, this lovely family home is sure to impress even the most fastidious buyers. The current owners had the home built in 2008 by Stirling Homes and they had significant input in the design, layout and configuration of the property, hence the intelligent footprint and over-sized rooms. The presentation is immaculate and exudes a warm, welcoming aura and the contemporary fixtures and fittings simply add to the impressive value proposition this home has to offer. Come with us as we introduce you to this amazing property.

- * Impressive facade complimented by low maintenance front garden
- * Wide and light filled entrance hallway
- * Enormous master suite with ceiling fan and walk-through his and her robes
- * Expansive ensuite with spa bath, vanity, shower and WC
- * Bedroom two, also to the front of the home with ceiling fan and currently used as a rumpus area
- * Super functional study/office with ceiling fan and garage access
- * Fabulous open plan kitchen/dining and living area
- * Expansive kitchen with oodles of cupboards, complimented by an oversize workbench
- * Stainless steel appliances including a programmable electric oven, gas cooktop and dishwasher as well as a Puratap water filter and double fridge cavity
- * The main living area opens to the light-filled enclosed outdoor area making it a logical extension to your lifestyle options
- * Bedrooms three and four to the rear of the home are, once again generously proportioned and incorporate built-in robes and ceiling fans
- * Family bathroom with spa bath and shower, separate vanity and wc
- * Generous and super functional laundry with more cupboard space and external access
- * Double garage with roller door access to rear yard
- * Low maintenance rear lawn with veggie patch

More inclusions:

- * Gas heating and evaporative cooling

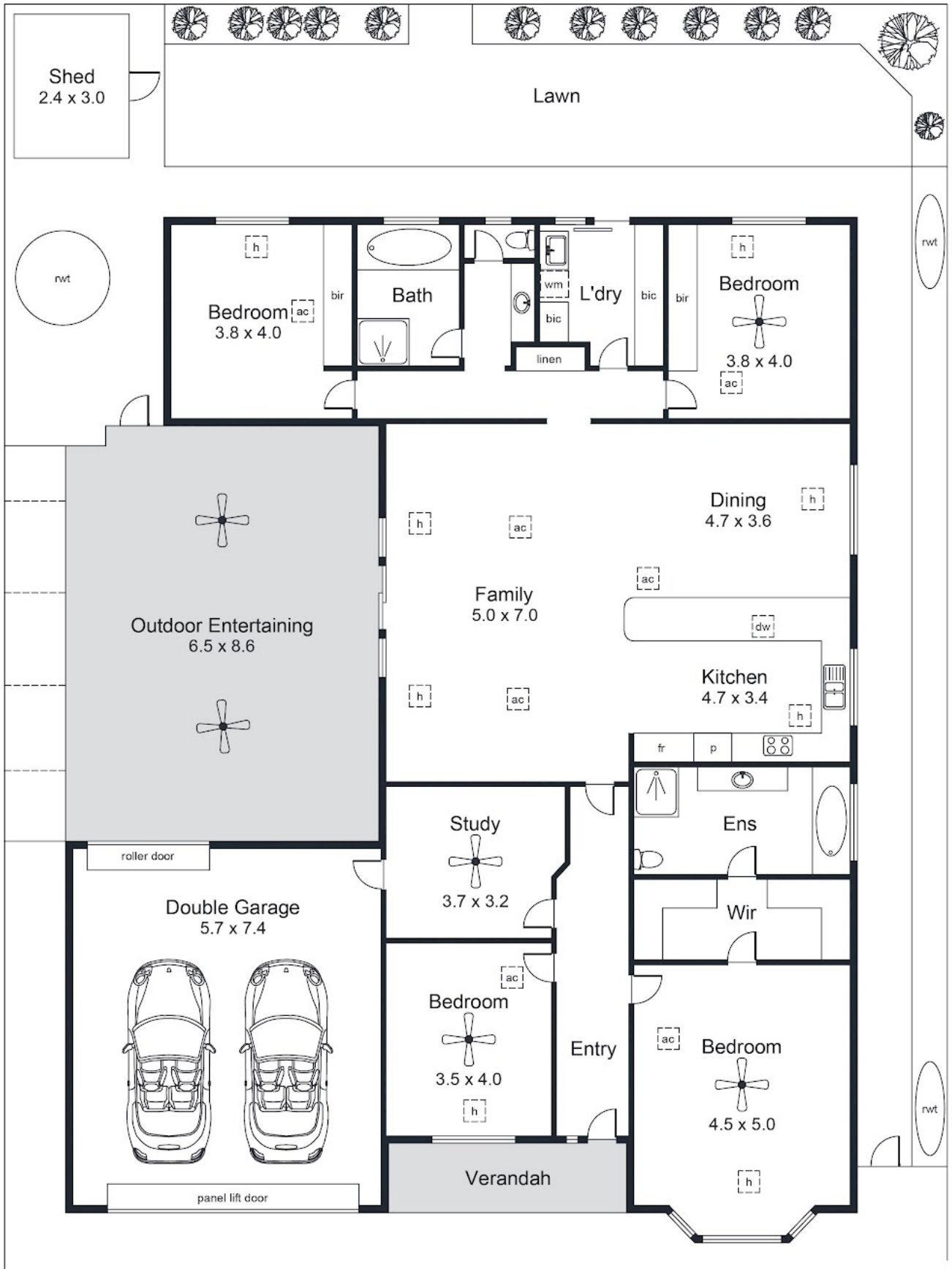
4 BED | 2 BATH | 2 CAR

PRICE:
\$650,000

OPEN FOR INSPECTION:
N/A



Gerry & Kathy McGuinness
0410531305
teammac@atrealty.com.au
www.atrealty.com.au
RLA: 269823



Disclaimer: Please note this floor plan is for marketing purposes and is to be used as a guide only. All dimensions are estimates only and may not be exact measurements.

Shed	7.2 m ²
Total	272.2 m²

For illustrative purposes only.
All measurements are approximate