



SOLD

DESIRABLE FAMILY SPACES MEETS CONVENIENT LOCATION!

Bright original spaces and generous low-maintenance surroundings illustrate the ideal appeal of this residence as a first family home that can be enjoyed today while offering options for adding your own touches tomorrow. Period influenced exterior tones complement welcoming interior proportions for living and dining that overlook substantial entertaining and garden dimensions of desirable depth. A kitchen that's immaculately maintained reflects enduring quality, a message confirmed by the bathroom and separate laundry of this welcoming three bedroom design. Ample parking, a double lock-up garage and storage shed further enhance the present day profile of a property with a fantastic future moments from public transport, Altona Meadows Community Park, Altona Green Primary School, Central Square and easy freeway access.

3 BED | 1 BATH | 4 CAR

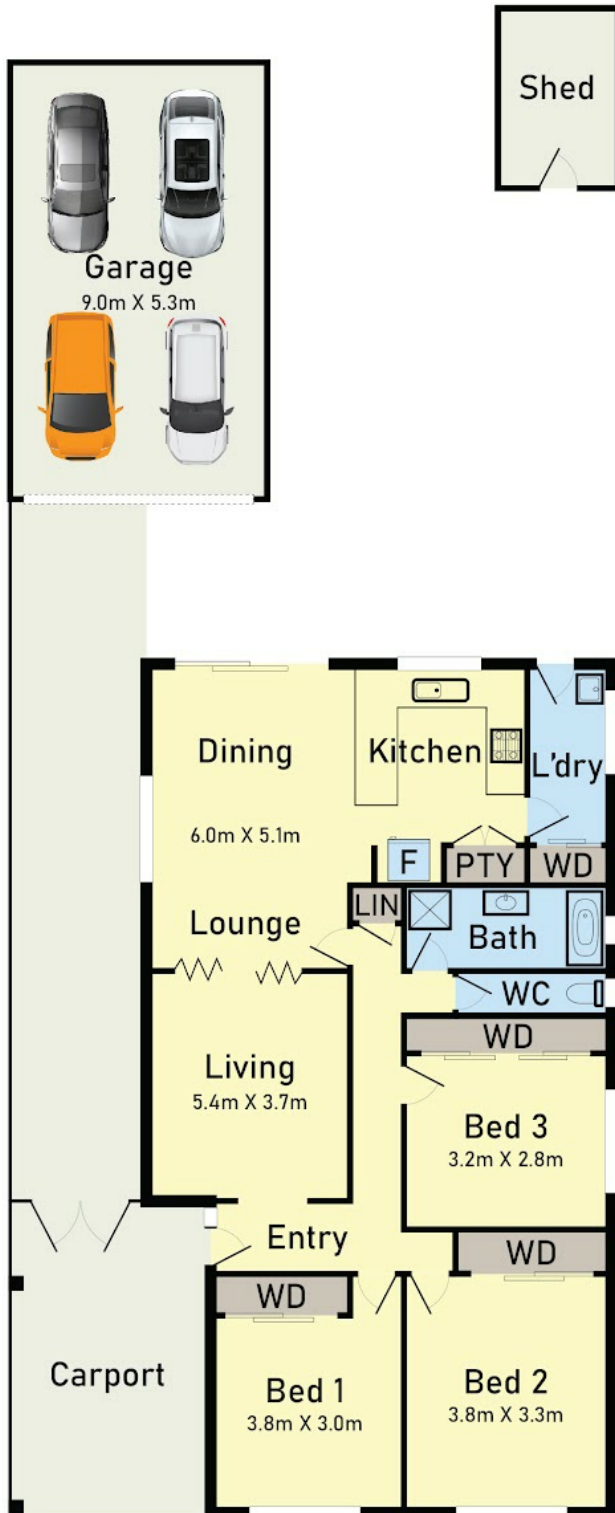
PRICE:
\$724,000

OPEN FOR INSPECTION:
N/A

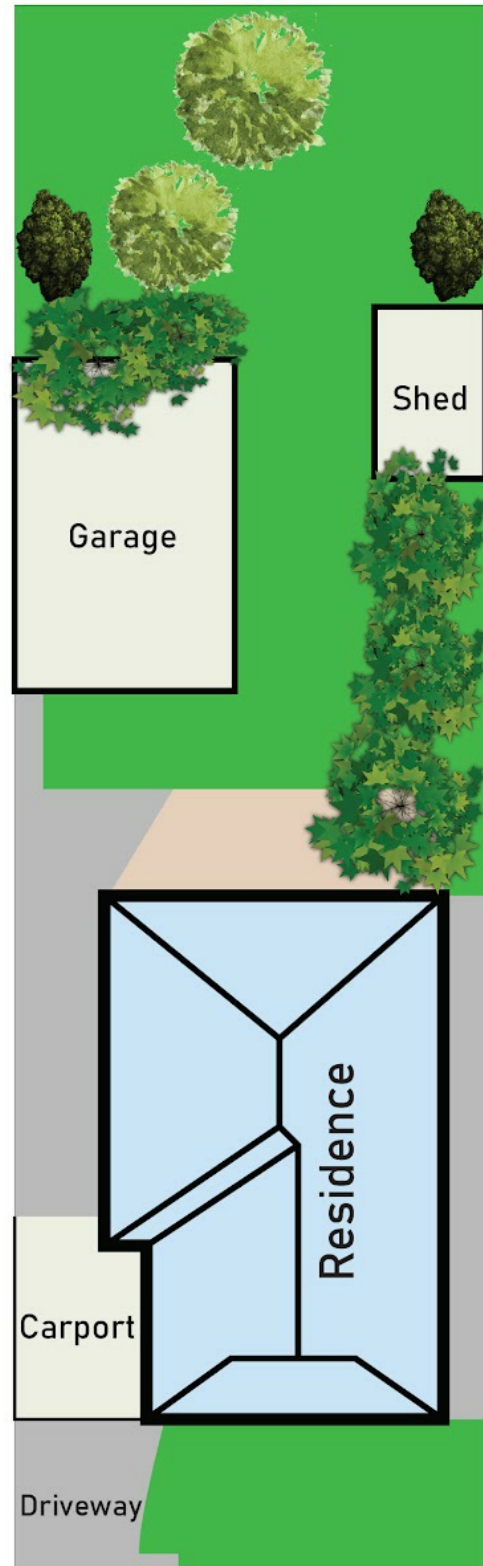


Joseph Hanna
0423966320
joseph@atrealty.com.au
www.atrealty.com.au

Floor Plan



Site Plan



Disclaimer: Please note this floor plan is for marketing purposes and is to be used as a guide only. All dimensions are estimates only and may not be exact measurements.

* Dimensions are approximate and for illustrative purposes only