



SOLD

RURAL SETTING - IN TOWN!

If you are looking for a country lifestyle with the convenience of town living, then this is for you. Set on a large corner block with rural views this home has its own feeling of separation from the Neighbours. The home has been beautifully maintained with lots of living space and storage ideal for a large family or multi-generational living. The flexible floor plan gives you the ability to use the living spaces in the best way to meet your needs. The home is currently set up as four bedrooms plus work from home office, multiple & sizeable formal and informal living areas plus an Alfresco area with rural views.

Located within an easy walk to the shops, cafes, restaurants, galleries, skate park, dog off leash area, recreation areas and train station. Children can walk safely to the Primary School and the new High School.

This home is conveniently located within half an hour of Canberra Airport and 83 kilometers from the Batemans Bay Bridge.

This is a unique home with some special attributes. Houses like this don't come on to the market very often.

Features:

- * Five bedrooms or four plus home office
- * Spacious contemporary kitchen with stone benchtop and stainless-steel appliances
- * Meals area/family room
- * Formal lounge and dining room
- * Rumpus room for entertaining, gym or crafts
- * Theatre room with 110-inch screen, surround sound and reclining chairs
- * High ceilings
- * Under roofline alfresco area with rural views and natural gas connection
- * Ducted gas heating
- * Two sided Chimene Phillippe combustion fireplace
- * Split system air conditioner
- * Double glazing
- * Floor to ceiling tiles in bathrooms
- * Spa bath
- * Established professionally landscaped gardens that are easily maintained
- * Secure yard with electric gates to front and secondary gate access at rear of block
- * Outdoor entertaining area with firepit
- * 4 bay garaging with 2.7m door height clearance

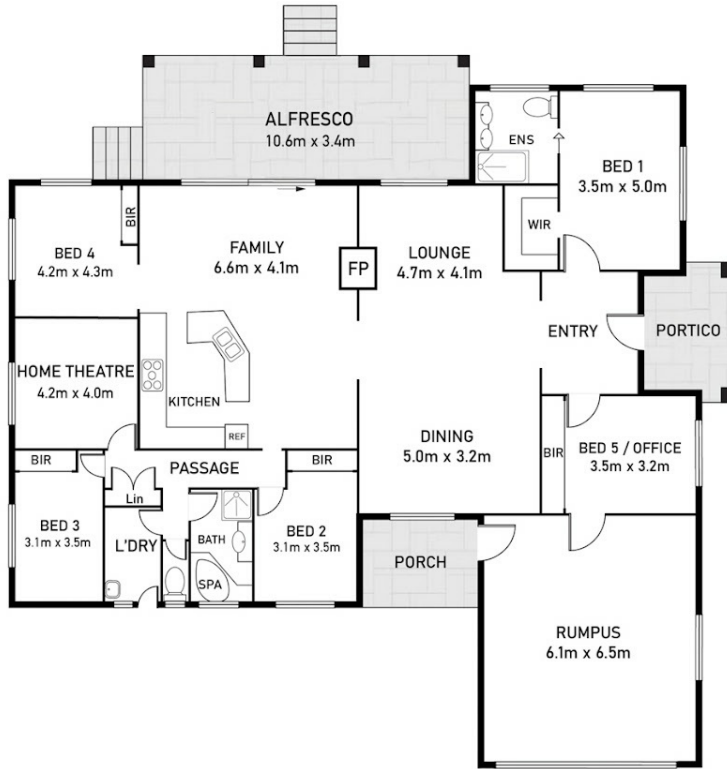
5 BED | 2 BATH | 4 CAR

PRICE:
\$1,400,000

OPEN FOR INSPECTION:
N/A



Ross Hincksman
0417687379
rossh@atrealty.com.au
www.atrealty.com.au



5 Modbury Street | BUNGENDORE

All information contained in this document is from sources we believe to be accurate, however we cannot guarantee its accuracy. Interested persons should make and rely on their own enquiries in relation to measurements, dimensions, layout, furniture and descriptions.

Disclaimer: Please note this floor plan is for marketing purposes and is to be used as a guide only. All dimensions are estimates only and may not be exact measurements.