



SOLD

CLOSE TO SAWTELL - READY TO MOVE IN

Built in 2002 this modern 3 bedroom home is great for those just starting out, investors or retirees.

Walk in the front door to the lounge room, with good wall space & reverse cycle air conditioning. The kitchen has plenty of cupboard & bench space plus a wall oven and dishwasher. Bedroom 2 at the front of this home is very generous in size with a gorgeous feature arched window, built in robe & ceiling fan. The main bedroom at the rear has direct access to the bathroom & 2 toilets, also reverse cycle air conditioning, built in robe & ceiling fan. Outside there is a large undercover entertaining area and a low maintenance fully fenced back yard, with plenty of room for the kids or dogs to play. Also, double gate side access perfect for those needing to store a caravan/boat/or trailer.

Set on a level 421m2 block this lovely home also has the added benefit of Solar Power, a single lock up garage with internal access & is situated just a short drive from Sawtell beaches, restaurants & village.

Expected to rent for approx. \$580pwk, Council Rates \$2926pa

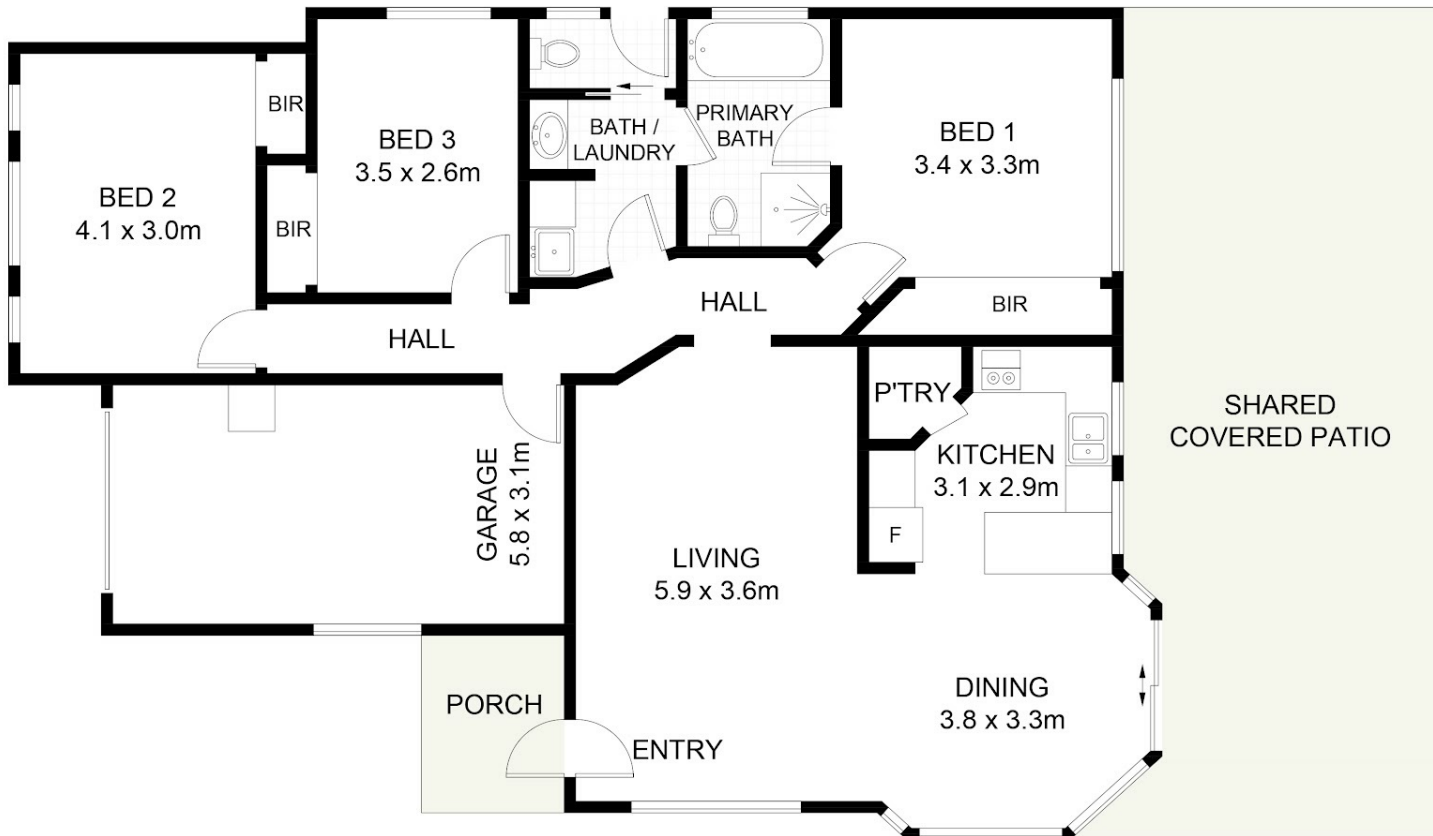
3 BED | 1 BATH | 1 CAR

PRICE:
\$650,000

OPEN FOR INSPECTION:
N/A



Nicole Stark
0437500962
nicolestark@atrealty.com.au
www.atrealty.com.au



3 Wave Close, Toormina, NSW 2452

DISCLAIMER: PLANS SHOWN ARE FOR PRESENTATION PURPOSES AND ARE NOT PART OF ANY LEGAL DOCUMENT. ALL MEASUREMENTS AND FIGURES ARE APPROXIMATE.

Disclaimer: Please note this floor plan is for marketing purposes and is to be used as a guide only. All dimensions are estimates only and may not be exact measurements.

Nicole Stark
 0437500962
 nicolestark@atrealty.com.au
 www.atrealty.com.au

