



FOR LEASE

LARGE FAMILY HOME + 2 LARGE LIVING AREAS + 6.6KW SOLAR

This 4 bedroom and 2 bathroom family home is in the prime location. The large outdoor patio and spacious yard is perfect for summer entertainment. You must view this property.

PROPERTY FEATURES

- 4 bedrooms, all with built-in wardrobes
- Master features ensuite & walk-in robe
- 2 bathrooms and master with ensuite
- Spacious formal lounge and dining
- Modern kitchen with walk-in pantry, stone bench tops and induction cooktop
- Separate family area
- Air conditioning throughout
- Remote double lock up garage with internal access
- Two large living areas
- Brand new dishwasher
- Large covered entertainment area at rear
- Fully fenced 740m² block with side access
- Easy access to Riverdale Park
- Quiet, sought-after double cul-de-sac positioning
- Large laundry room with the outdoor access
- Security screens throughout
- 6.6kW Solar
- Garden shed

LOCATION

- Riverdale Park - 150m
- Bus services 700m
- Logan TAFE 800m
- Logan Hospital 1.2km
- Loganlea Railway Station 1.4km
- Meadowbrook Shopping Centre 1.5km
- M6 Motorway access 2km

4 BED | 2 BATH | 2 CAR

PRICE:

\$650 per week

OPEN FOR INSPECTION:

N/A

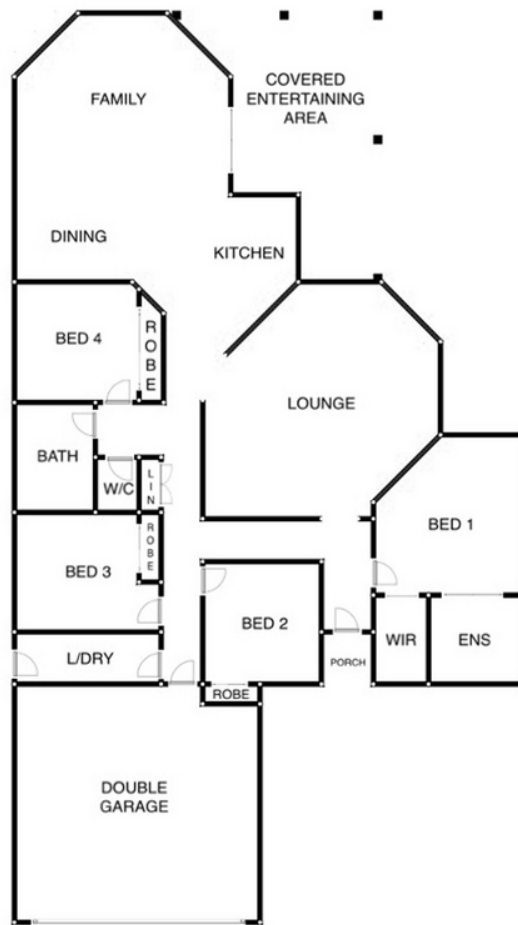


Mohammad Sahadat

0430078532

mohammad@atrealty.com.au

www.atrealty.com.au



FLOOR PLAN INDICATIVE OF LAYOUT ONLY

Disclaimer: Please note this floor plan is for marketing purposes and is to be used as a guide only. All dimensions are estimates only and may not be exact measurements.