



SOLD

SOLD -MORE BUYERS WAITING

Come visit this charming property in a convenient, sought-after Canning Vale location. A 4 bedroom 2 bathroom home with a practical internal layout offering an easy, low maintenance, and peaceful lifestyle. This house will suit an astute investor, first home buyer, a small family, a downsizer, and FIFO workers.

Set in a quiet complex of homes at 'Peppermint Park Canning Vale' and within a short distance of bus stops, parklands, medical centers, shopping centers, cafés, restaurants, and public schools, this property is an exciting opportunity not to be missed. Its centralised location and ease of access to major roads provide great convenience to the occupants.

FEATURES

- Good size open plan kitchen, living, and meal area
- Well-appointed kitchen with stone benchtop
- 900mm gas cooktop and range hood
- Dishwasher included
- Master bedroom with ensuite, large window, and built-in robe
- All 3 minor bedrooms are of good size with large windows and built-in robes
- The second bathroom comes with a shower cabinet and a bathtub
- Reverse-cycle air-conditioning in the living area and master bedroom
- Easy-to-maintain front and back yards
- Double garage with remote control and shoppers' entrance
- Living areas open out to the alfresco entertaining area
- LED lights throughout
- Gas hot water system
- All windows come with Venetian blind window treatment
- Walk to the local IGA and shops
- Fantastic location close to parks, schools, shops, and transport
- Short walk to the bus stop that links to Murdoch Station, Murdoch University & Fiona Stanley Hospital

Built in 2016
Approximate outgoings:
Council rates \$1832pa

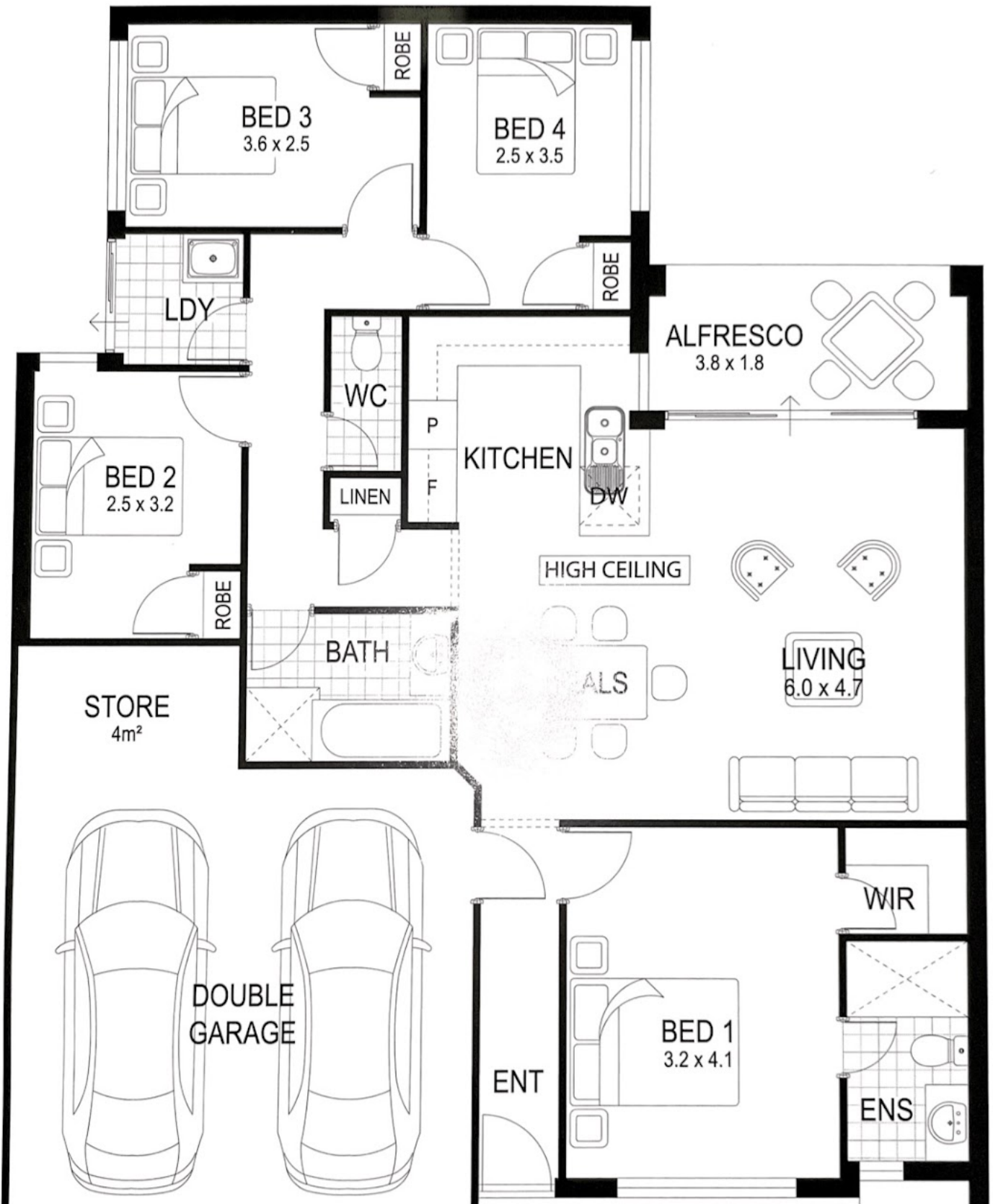
4 BED | 2 BATH | 2 CAR

PRICE:
\$470,000

OPEN FOR INSPECTION:
N/A



Seulyn Wong
0422025192
seulyn@atrealty.com.au
www.atrealty.com.au



Disclaimer: Please note this floor plan is for marketing purposes and is to be used as a guide only. All dimensions are estimates only and may not be exact measurements.

House	112.6m ²
Garage	36.1m ²
Alfresco	7.1m ²
Porch	3.6m ²
Total	159.4m ²

Seulyn Wong
0422025192

seulyn@atrealty.com.au

www.atrealty.com.au

@realty