



SOLD

IDEAL DOWNSIZER OR FIRST HOME.

Contact your local agent Tricia 0457314206

Discover your dream 2 Bed, 1 Bath unit that would suit first home buyers, retirees, or a savvy investor.

Immerse yourself in the convenience and privacy of this lovely two-bedroom unit in Morphett Vale. A perfect choice for those looking for the ideal blend of comfort and a low maintenance living.

The moment you walk through the front door you're welcomed by a spacious, light filled living and dining area, with a large picture window. Ducted heating and cooling throughout the home offers year-round comfort. Roller shutters around the home add to the value.

The master bedroom is a great size with a ceiling fan and can accommodate a queen size bedroom suite. Both bedrooms have BIRs and are conveniently located close the bathroom with a walk-in shower and there is a separate WC. The kitchen has been updated and is well-equipped with appliances and plenty of storage, overlooking the gorgeous back yard. An undercover entertaining area and a very sweet garden and lawn area making this a great space to spend time in with a good book or the perfect spot for family and friends for those summer BBQs. A separate laundry is always an advantage with direct access to the rear yard and a bonus garden shed.

The garage is secure with a remote-control roller door with internal access to the home with an extra storage room.

This home is situated in a quiet residential area near schools and shops, with easy access to public transport, and plenty of shopping.

If you're looking for a low maintenance, yet stylish home in Morphett Vale, look no further. This property is a must-see and will be snapped up quickly, so don't miss out!

All floor plans, photos, and text are for illustration purposes only and are not intended to be part of any contract. All measurements are approximate, and details intended to be relied upon should be independently verified.

RLA 271071 RLA 269823

2 BED | 1 BATH | 1 CAR

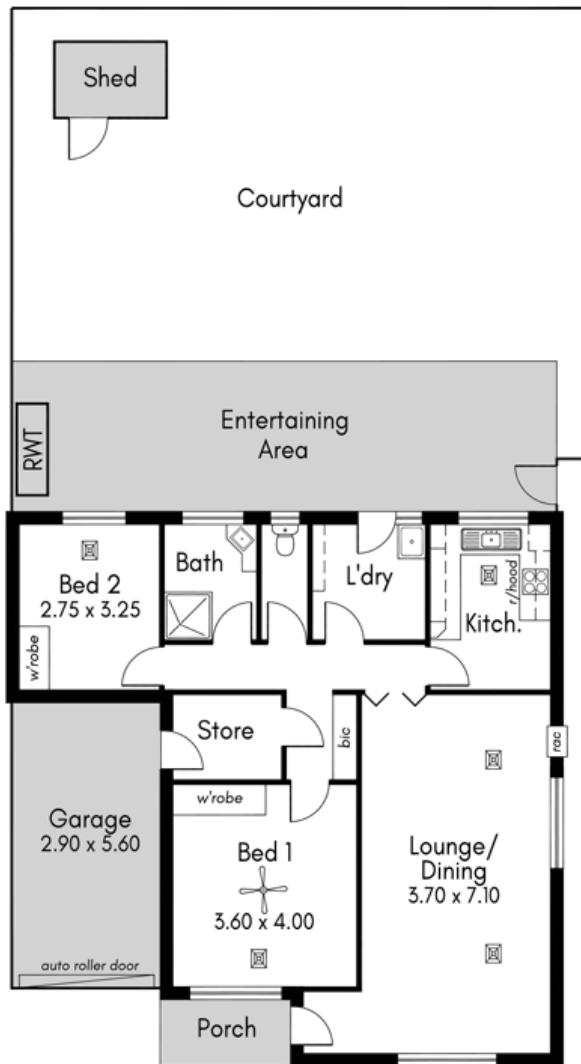
PRICE:
\$430,000

OPEN FOR INSPECTION:
N/A



Tricia Kernahan
0457314206
tricia@atrealty.com.au
tfkrealstate.com.au
RLA: 269823

Approximate Area SQM
LIVING AREA: 94 SQM



8/43 Jordan Drive, Morphet Vale

DISCLAIMER
This drawing is for illustration purposes only. The information contained is NOT intended to be part of any contract. All measurements are approximate and details intended to be relied upon should be independently verified. While every effort has been made to verify the correct details in this drawing, neither the agent, vendor or illustrator accept responsibility for any errors, omissions, or wrongful inclusions. Exterior objects may not be in position.

Disclaimer: Please note this floor plan is for marketing purposes and is to be used as a guide only. All dimensions are estimates only and may not be exact measurements.