



SOLD

MULTIPLE OFFERS - NOW UNDER OFFER!

This immaculately clean, three bedroom two level townhouse located in a highly maintained, small group of strata units is perfect for downsizers, FIFO workers or young buyers entering the market – Fabulous as is or perfect to renovate.

Located just a few minutes' walk to the vibrant Claremont Quarter shopping precinct & according to Google; just a 9 minute walk or 2 minute bike ride to the Claremont train station where you can catch the new Metronet line directly to the Airport!

This property is a MUST SEE! - Contact Agent for price guide

DOWNSTAIRS FEATURES

- Large loungeroom with plush carpet, study nook, plenty of natural light, sliding door out to one of two alfresco areas
- Gas bayonet, reverse cycle air conditioning unit, storage cupboard, skirting boards
- Retro feel, original kitchen with cork flooring, breakfast bar, new wall oven & grill, electric cook top, good size pantry. Sliding door to rear fully fenced & paved yard with cute garden & large pergola.
- Laundry is generous size with door to outside
- Separate toilet next to laundry, perfect layout to accommodate a second bathroom if wanted
- Original solid jarrah stair rails to staircase

UPSTAIRS FEATURES

- Master bedroom is queen size with double BIR's, air conditioner cool only & large windows
- Second bedroom is large double with double BIR's
- Third bedroom is large double with BIR's
- Bathroom is original with shower over bath, separate toilet

OUTDOOR ENTERTAINING

- Alfresco 1 - lovely brick paving with wooden slat pergola & tropical feel garden
- Alfresco 2 – again lovely brick paving with large wooden pergola, nice garden bed. Access from the kitchen through sliding door. Perfect for the much loved pooch or feline friend or for a keen gardener growing a lush garden or even a few veggies.

OTHER FEATURES

- Security screens on doors and windows
- Parking for two cars – one in the garage with new remote door, the other directly in front of the garage, street parking permits also available
- RCD & Smoke Detector compliant
- Reticulated gardens on mains water with timer

3 BED | 1 BATH | 2 CAR

PRICE:
\$783,168

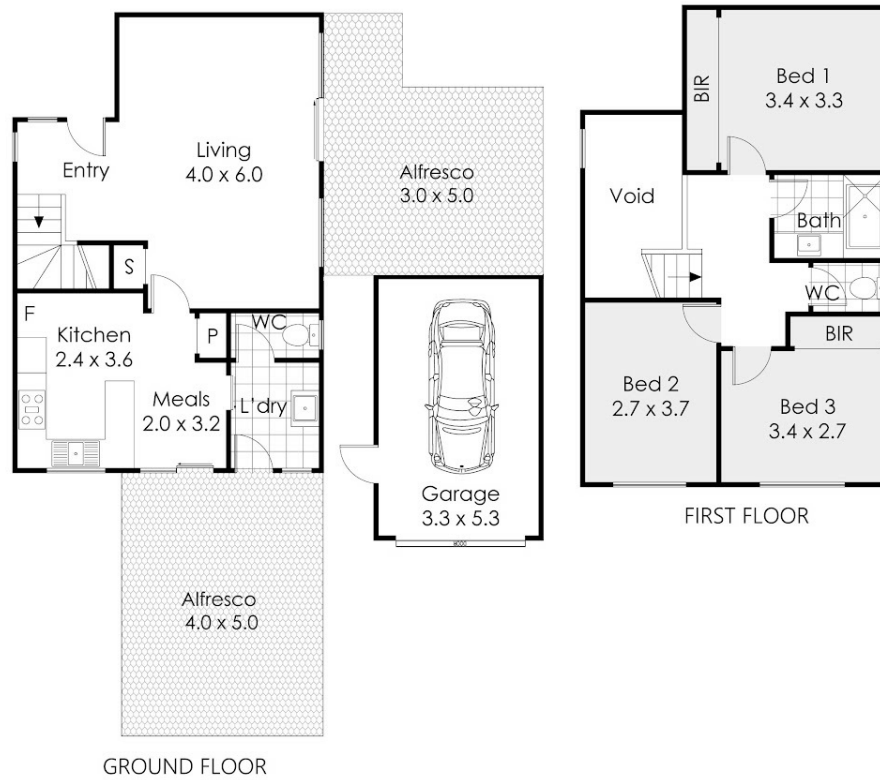
OPEN FOR INSPECTION:
N/A



Jill Groves | Chloe Leggett Team
0408765240

jillgroves@atrealty.com.au

www.atrealty.com.au



23 Chatsworth Terrace, Claremont

This floor plan is not to scale.
Dimensions are approximate and therefore should only be used for illustrative purposes.

	127 m ²
	3 Bed
	1 Bath
	1 Car

Disclaimer: Please note this floor plan is for marketing purposes and is to be used as a guide only. All dimensions are estimates only and may not be exact measurements.