



SOLD

FANTASTIC AFFORDABLE LIVING

Contact your local Agent Tricia 0457 314 206 to view this property.
In leafy Woodcroft Tourist Park, sits this beautiful cabin. This open plan 1 bedroom home offers peaceful & low-maintenance living, close to public transport, the Woodcroft Town Centre, and the Woodcroft Hotel.

This lovely home offers:-

- A spacious bedroom with BIR, able to accommodate a double or queen size bed.
- The kitchen has a walk-in pantry, gas cook top and plenty of cupboard and bench space in neutral tones.
- A gorgeous lounge and good-sized dining area is light and bright with modern timber look floors, with plenty of room to have an office space. Reverse cycle split system heating & cooling for year-round comfort and a ceiling fan, makes this a great space to spend time in.
- The bathroom and laundry are centrally located for your convenience. Roller shutters along the front of the property and security screens are a bonus.
- A sunroom that could be used for a multitude of purposes, overlooking the undercover entertaining area suitable to sit and read with a cuppa or have a Sunday BBQ.
- A garden shed and a covered carport all add to the benefits of park living.
- The park backs onto Thaxted Park Golf Course and is in a lovely bushland and creek setting. Kangaroos and ponies roam within a separate fenced area, there for everyone to enjoy.
- Bring the family over and take advantage of the park facilities with a children's playground and BBQ area.

The weekly fee To the Park is \$168. You may be eligible for rental assistance from Centrelink.

- No water Bill
- No council fees
- No stamp duty
- No pets
- One or two people only.
- Cabin only
- Must be a cash purchase (no loans)
- You pay gas, power, cabin insurance.
- They can't be rented out for investment.

1 BED | 1 BATH | 1 CAR

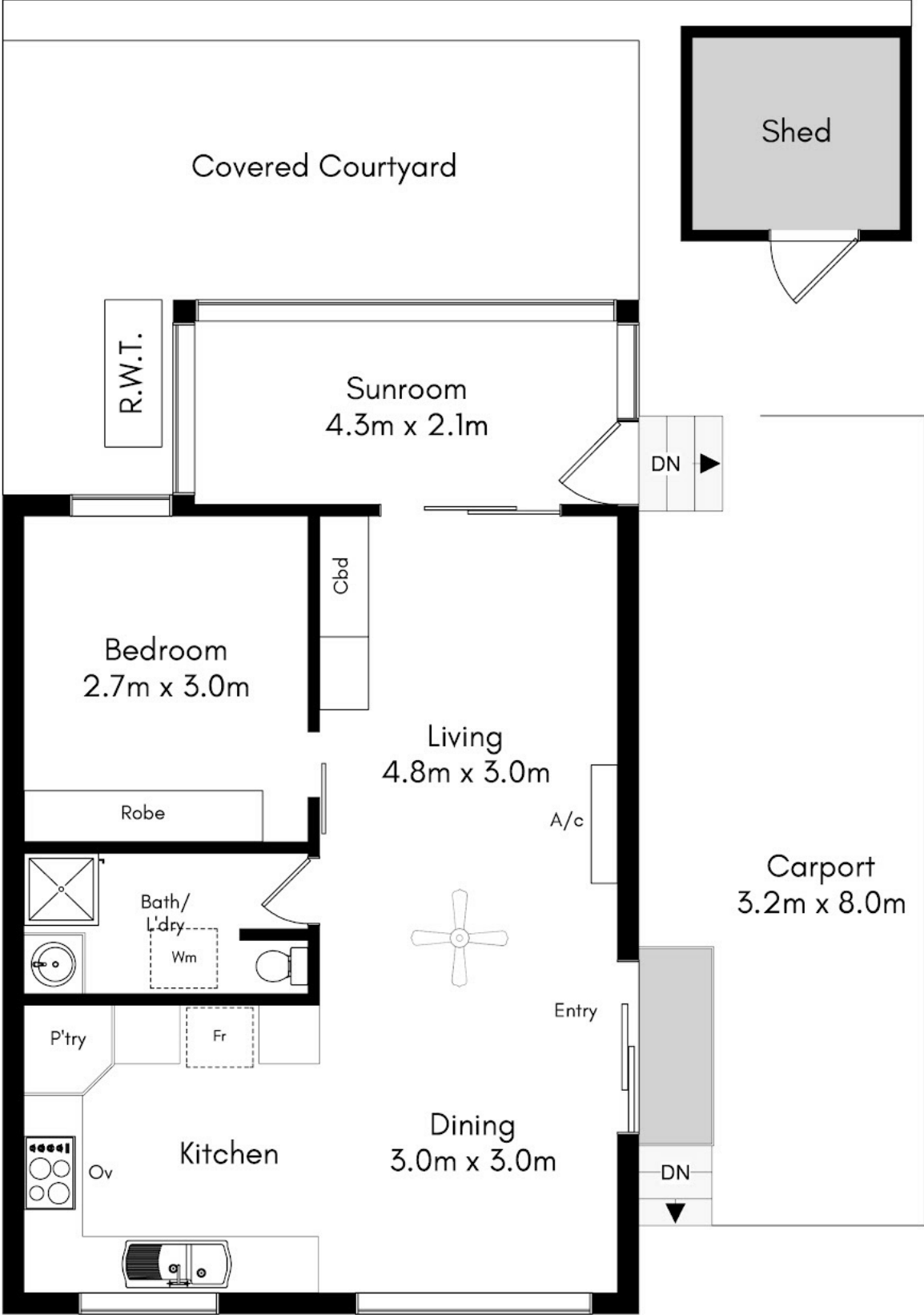
PRICE:
\$130,000

OPEN FOR INSPECTION:
N/A



Tricia Kernahan
0457314206
tricia@atrealty.com.au
tfkrealstate.com.au
RLA: 269823

Approximate Internal Area - 65 SQM



Disclaimer: Please note this floor plan is for marketing purposes and is to be used as a guide only. All dimensions are estimates only and may not be exact measurements.

DISCLAIMER

This drawing is for illustration purposes only. The information contained is NOT intended to be part of any contract. All measurements are approximate and should be relied upon should be independently verified. While every effort has been made to verify the correct details in this drawing, the agent, vendor or illustrator accept responsibility for any errors, omissions, or wrongful inclusions.

Tricia Kernahan
0457314206
tricia@atrealty.com.au
tfkrealestate.com.au

