

## FOR SALE

### AN OUTSTANDING FAMILY HOME WITH ACCESS FOR CARAVAN/BOAT

What a find this beautiful 2.5 year old home is!

For the travellers or watercraft owners it comes complete with its own concrete slab for caravan/boat storage with full double gate side access.

Come inside and you are greeted with a light filled wide hallway & soft large tiles that accentuate the calm space this home exudes.

The centre hub of this home features a fabulous open plan lounge & dining area with a stunning kitchen. The kitchen boasts stone bench tops, under cabinet lighting, a large walk in pantry & breakfast bar. Plus, quality stainless appliances which include a dishwasher, steam oven, a built in microwave with grill element plus gas cook top.

Down the hall and to the rear of the home is the master bedroom that overlooks the lovely back yard, with its white plantation shutters, a fabulous walk behind robe & extra large ensuite.

For the kids there are 3 other generous sized bedrooms, all with plantation shutters & built in robes, a purpose built study nook and a Media Room that should keep them entertained.

Throughout this stunning home it has been fitted with a high quality Daikin ducted, 6 zoned reverse cycle air conditioning system that can also be accessed remotely from your phone.

Outside to the easy care, fully fenced back yard & you have the choice of 2 under cover entertaining areas. One with an open & close vergola style roof, & one that leads out from the lounge & dining room, perfect for entertainers.

To complete this home there is a double lock up garage with internal & remote access that features a great work shop, 6.6kw solar panels, gas hot water.

Nothing for you to do, except to move in!

4 BED | 2 BATH | 2 CAR

PRICE:

\$995,000 - \$1,050,000

OPEN FOR INSPECTION:

N/A

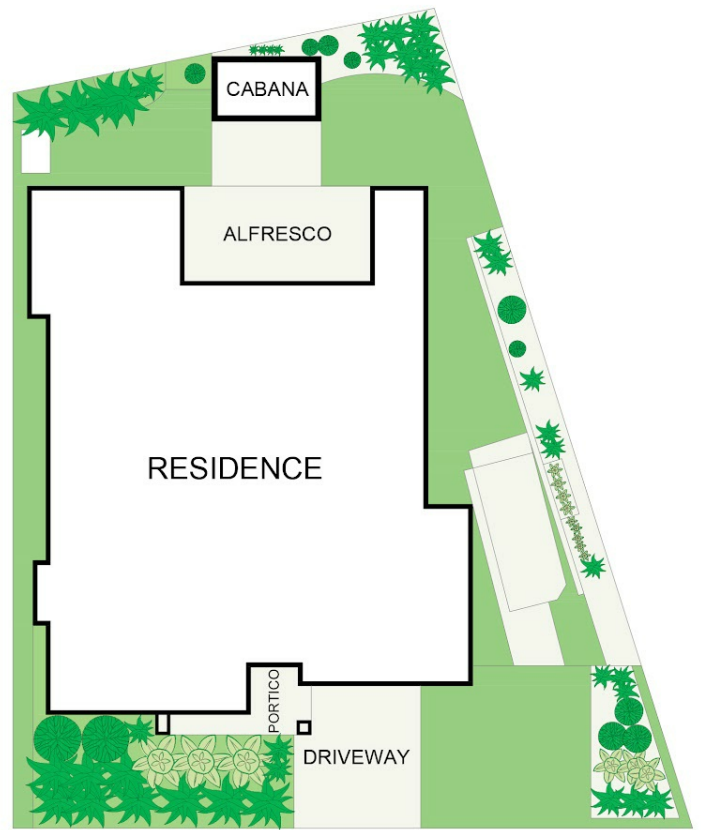
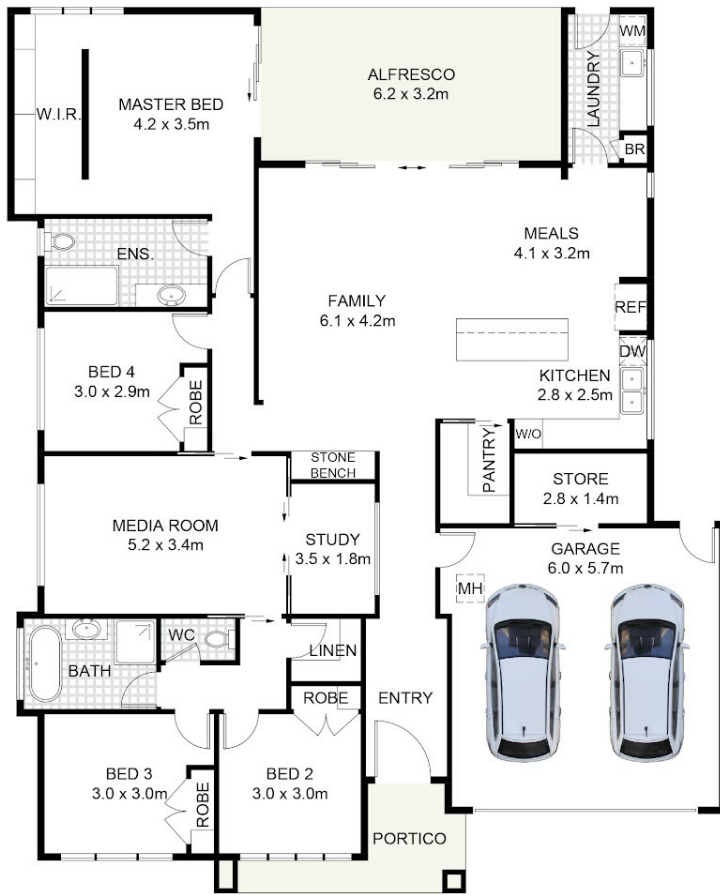


**Nicole Stark**

**0437500962**

[nicolestark@atrealty.com.au](mailto:nicolestark@atrealty.com.au)

[www.atrealty.com.au](http://www.atrealty.com.au)



SITE PLAN  
(NOT TO SCALE)



90 Coriedale Drive, Coffs Harbour, NSW 2450

DISCLAIMER: PLANS SHOWN ARE FOR PRESENTATION PURPOSES AND ARE NOT PART OF ANY LEGAL DOCUMENT. ALL MEASUREMENTS AND FIGURES ARE APPROXIMATE.

Disclaimer: Please note this floor plan is for marketing purposes and is to be used as a guide only. All dimensions are estimates only and may not be exact measurements.