



SOLD

SPACIOUS RESORT-STYLE RESIDENCE IN PARADISE - ONLY 50 METRES TO THE WATER

Looking for a spacious renovated home for the family and plenty of room to entertain? Then you can't go past this gorgeous resort-style home in one of the best locations on Bribie Island. Set privately at the top of a cul-de-sac, on a large 1024 sqm block, this exquisite four-bedroom property is spacious and stylish, yet exudes a laid-back feeling. This gorgeous home is situated across the road from the Pumicestone Passage with its' walking tracks, children's playgrounds, covered barbeque areas and outdoor gym equipment. Enjoy the beautiful sunsets over the water to the famous Glass House Mountains.

Downstairs:

- Glorious in-ground pool with waterfall, tropical palms, private sun decks and outdoor shower
- Massive alfresco area which connects seamlessly to the spacious living area
- Master suite/guest bedroom with walk-in robe and en-suite and two other bedrooms with built-in robes
- Study with built-in office cabinets
- Open plan kitchen/family/dining with the designer kitchen boasting a walk-in pantry, soft-close drawers, stone benchtops, appliance cupboard and two dishwashers
- Enormous multi-purpose/rumpus room with tons of built-in storage and private deck

Upstairs:

- King-size master bedroom with water views of the Pumicestone Passage
- Walk-in robe and en-suite with a huge soaker bathtub

Other features:

- 6.6 kws solar power
- Ducted air conditioning and ceiling fans
- Broadband
- Water tanks and spear pump
- Double garage with work bench
- Beautifully maintained gardens

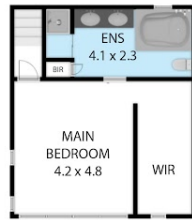
4 BED | 3 BATH | 2 CAR

PRICE:
\$1,300,000

OPEN FOR INSPECTION:
N/A



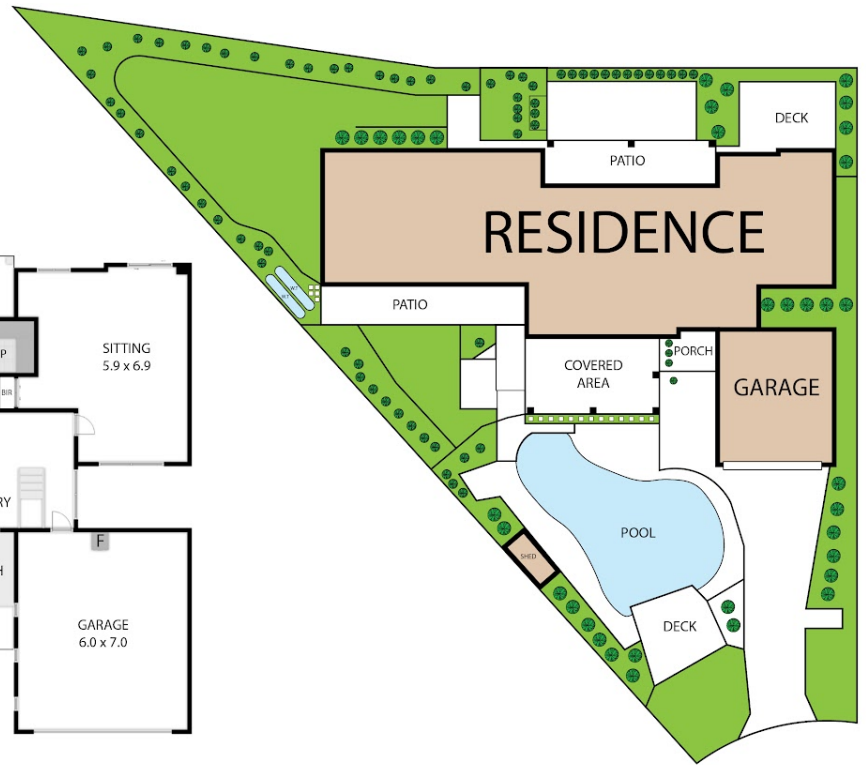
Geoff and Rose Tutt
0414230130
geoff@atrealty.com.au
www.atrealty.com.au



FIRST FLOOR



GROUND FLOOR



9 Elizabeth Batts Court, Banksia Beach 4507

TOTAL APPROX. FLOOR AREA 286 SQ.M

Whilst every attempt has been made to ensure the accuracy of the floor plan contained here, measurements of doors, windows, rooms and any other items are approximate and no responsibility is taken for any error, omission, or misstatement. This plan is for illustrative purposes only and should be used as such by any prospective purchaser.



Disclaimer: Please note this floor plan is for marketing purposes and is to be used as a guide only. All dimensions are estimates only and may not be exact measurements.

Geoff and Rose Tutt
0414230130
geoff@atrealty.com.au
www.atrealty.com.au

