

14A THE CRESCENT, ST MARYS, SA, 5042



SOLD

"SEIZE THE OPPORTUNITY: GORGEOUS MODERN TOWNHOUSE "

SOLD !

Welcome home to this beautiful townhouse located in the vibrant and sought after area of St Marys!

This two-story townhouse in a quality private community estate, is situated in the perfect location providing easy access to lovely beaches, the southern vales, various shopping centres, schools, and all the amenities you could ever need. You're also surrounded by plenty of green space and beautiful nature parks, making it the ideal spot to call home .

The interior of the home is cleverly designed and features two bedrooms separated between lower and upper floors with spacious built-in robes and two bathrooms, ensuring that there's plenty of room for your family or guests.

The open plan living areas are filled with natural light, and the kitchen is modern and equipped with stainless steel SMEG appliances, making it the perfect spot for entertaining both inside or through the large panelled sliding doors to the undercover balcony with open views. There's also a spacious and comfortable private courtyard, with access to the garage and perfect for enjoying a morning coffee or evening drinks or even a BBQ with friends and family.

Features to admire -

- * Designer kitchen with 20mm stone benchtops
- * Silk finish joinery cupboards
- * Smeg quality appliances including cookware and dishwasher
- * Quality timber look featured floating floors
- * Higher 2.7mtr ceilings on upper level for living / bedroom areas
- * Ducted reverse cycle air conditioning with zone control
- * Rainwater tank & pump (grey water)
- * Colourbond high fencing for privacy
- * 2nd Roller door for access to the rear yard

The property is also well-maintained and is move-in ready, so you can start enjoying your new home right away or if you are an investor then it is ready for your new tenants whom will be

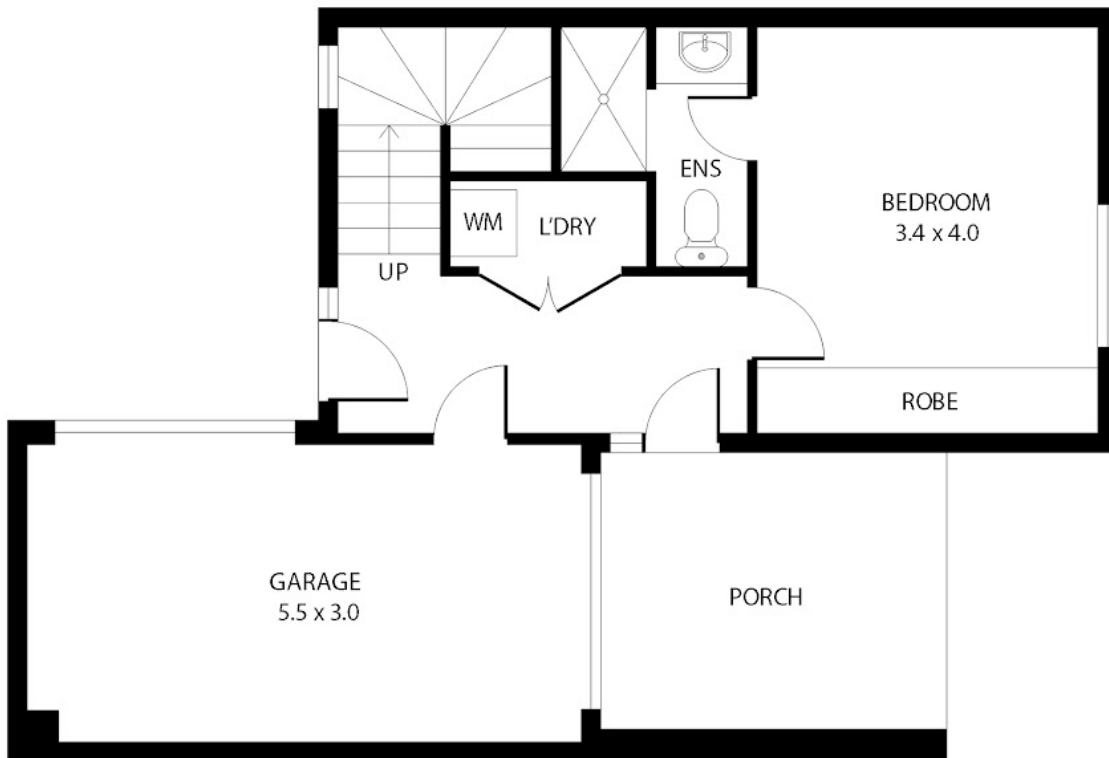
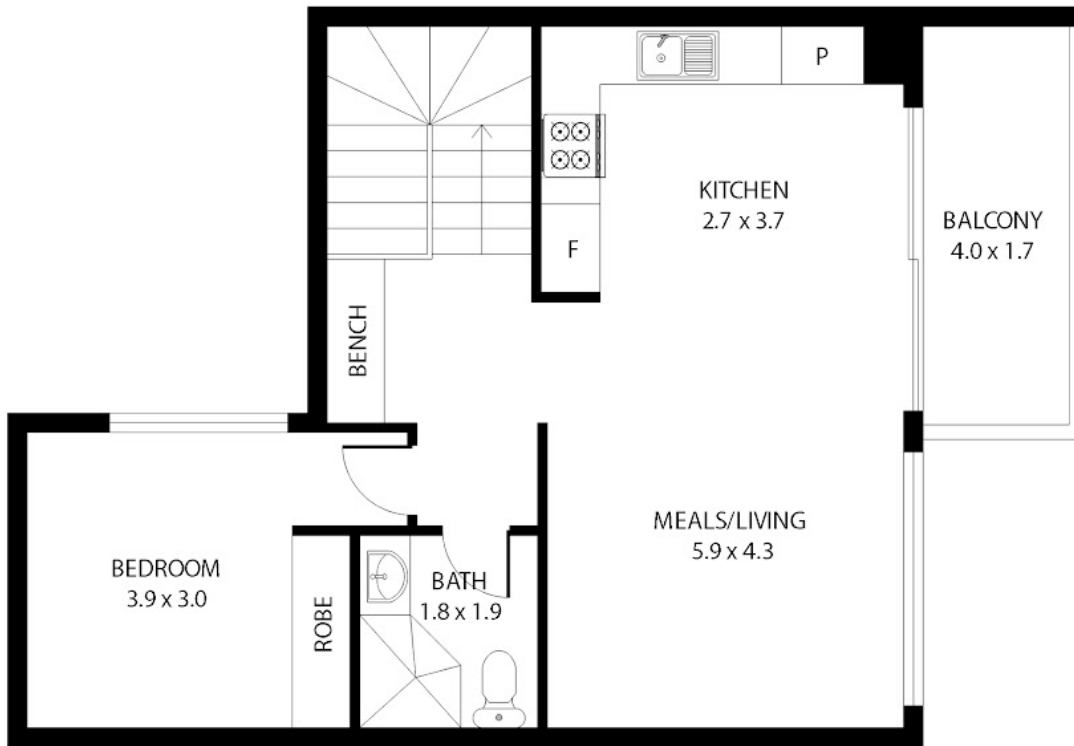
2 BED | 2 BATH | 2 CAR

PRICE:
\$550,000

OPEN FOR INSPECTION:
N/A



Armin Breakwell
0401235590
xiting@atrealty.com.au
www.atrealty.com.au
RLA: 269823



120m² 92m² 19m² 11m² 7m²

Disclaimer: Please note this floor plan is for marketing purposes and is to be used as a guide only. All dimensions are estimates only and may not be exact measurements.

Whilst every attempt has been made to ensure the accuracy of the floor plan contained here, measurements of doors, windows, rooms and any other items are approximate and no responsibility is taken for any error, omission, or misstatement. The floor plan is for marketing purposes only and should be used as such by any prospective purchaser.

Armin Breakwell
 0401235590
 xiting@atrealty.com.au
www.atrealty.com.au

