



**SOLD**

## LUXURIOUS LIVING IN EMU PLAINS...

Welcome to Emu Plains, the perfect place to enjoy this amazing property & achieve your dream with this beautiful family home

Here we have a magnificent four bedroom, two bathroom home, complete with a luxurious ensuite, that is situated on an expansive 626 square meters of land. The house itself boasts generous living areas, both indoors & outdoors.

As you walk through the front door, you'll be welcomed by a bright & airy living area, spacious in its proportions,  
All 4 Bedrooms feature large built-in wardrobes & great natural light.  
For year round comfort, this gorgeous brick home has ducted air-conditioning throughout.

The kitchen is the perfect place to cook up a storm with its large storage options & cascading stone bench tops. View your private pool from the ambiance of this charming space.

Sliding doors open up to the huge outdoor entertainment area, where you can entertain family and friends in style. With a fully fenced in-ground swimming pool, an alfresco dining area, and a deck that overlooks the pool & patio, you'll have plenty of space to relax and unwind.

This is a truly special opportunity to secure a wonderful family home in a picturesque part of Emu Plains. With four generous sized bedrooms and two bathrooms, it's the perfect way to start your new life in this sought-after suburb. So don't delay, enquire today!

Jessica Bruns of Pearl Property Agents 0430 117 048

"The way Real Estate should be"

[www.pearlpropertyagents.com.au](http://www.pearlpropertyagents.com.au)

....

**4 BED | 2 BATH | 2 CAR**

**PRICE:**  
**\$1,043,000**

**OPEN FOR INSPECTION:**  
**N/A**



**Jessica Bruns**  
**0430117048**  
[pearlpropertyagents@atrealty.com.au](mailto:pearlpropertyagents@atrealty.com.au)  
[www.atrealty.com.au](http://www.atrealty.com.au)

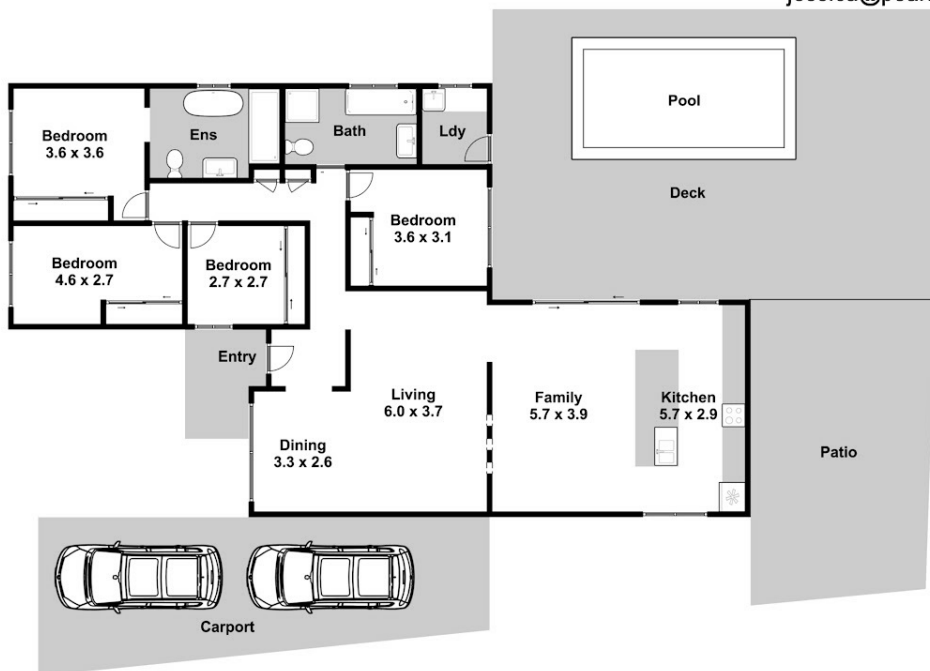
# 9 Iralba Avenue, Emu Plains



Please note:  
Floorplan measurements are a guide only.  
All dimensions are approximate in their distance and volume.  
We cannot guarantee its accuracy and interested persons should rely on their own enquiries.

 [www.digital1.com.au](http://www.digital1.com.au)

Jessica Bruns - LREA  
0430 117 048  
[jessica@pearlpropertyagents.com.au](mailto:jessica@pearlpropertyagents.com.au)



-  4
-  2
-  2

Disclaimer: Please note this floor plan is for marketing purposes and is to be used as a guide only. All dimensions are estimates only and may not be exact measurements.

Jessica Bruns  
0430117048  
[pearlpropertyagents@atrealty.com.au](mailto:pearlpropertyagents@atrealty.com.au)  
[www.atrealty.com.au](http://www.atrealty.com.au)

