



SOLD

FAMILY HAVEN IN A PRIME LOCATION

Welcome to 28 Sutton Cres, Wilton. This exquisite Masterton home has been built in a prime location directly adjacent from the local park, a perfect spot for the kids to play or simply somewhere to go where you can relax in the sun. This stunning abode is impressive in every sense of the word, spread over an easy flow, expansive floorplan, it encompasses quality & comfort from entry to exit. The use of space has been cleverly maximised with each quality inclusion and feature being meticulously hand picked by the owners to ensure family functionality & practicality are achieved for a more thoroughly enjoyable lifestyle.

Features Include:

- Masterton designed home
- Front porch overlooks the established & manicured semi enclosed front yard
- Boasting three well proportioned bedrooms with built in robe to bed 2
- Bedroom 3 includes a private toilet with wash basin & a ceiling fan
- The master suite is equipped with a generously sized walk in robe, ensuite that features dual basins, a double length shower with 2 shower heads, a ceiling fan & access to a private porch
- Expansive open plan family & meals room includes built in shelving & ceiling fan
- Media room includes shelving & backyard access
- Well appointed kitchen with ample cupboard & bench space
- Quality appliances including a dishwasher
- 900mm Gas cooktop & oven
- Glass canopy overhead rangehood
- 40mm Stone benchtops
- Soft closing cupboards & drawers
- Spacious walk in pantry
- Breakfast bar
- Bright & airy main bathroom is equipped with a bathtub
- Spacious internal laundry includes a linen cupboard & backyard access
- 3 Zoned AC system
- 2.6m High ceilings
- Alarm system
- The alfresco cleverly allows this space to be used with privacy & includes stacking sliding doors to allow for an easy indoor / outdoor transition & a ceiling fan
- Low maintenance backyard

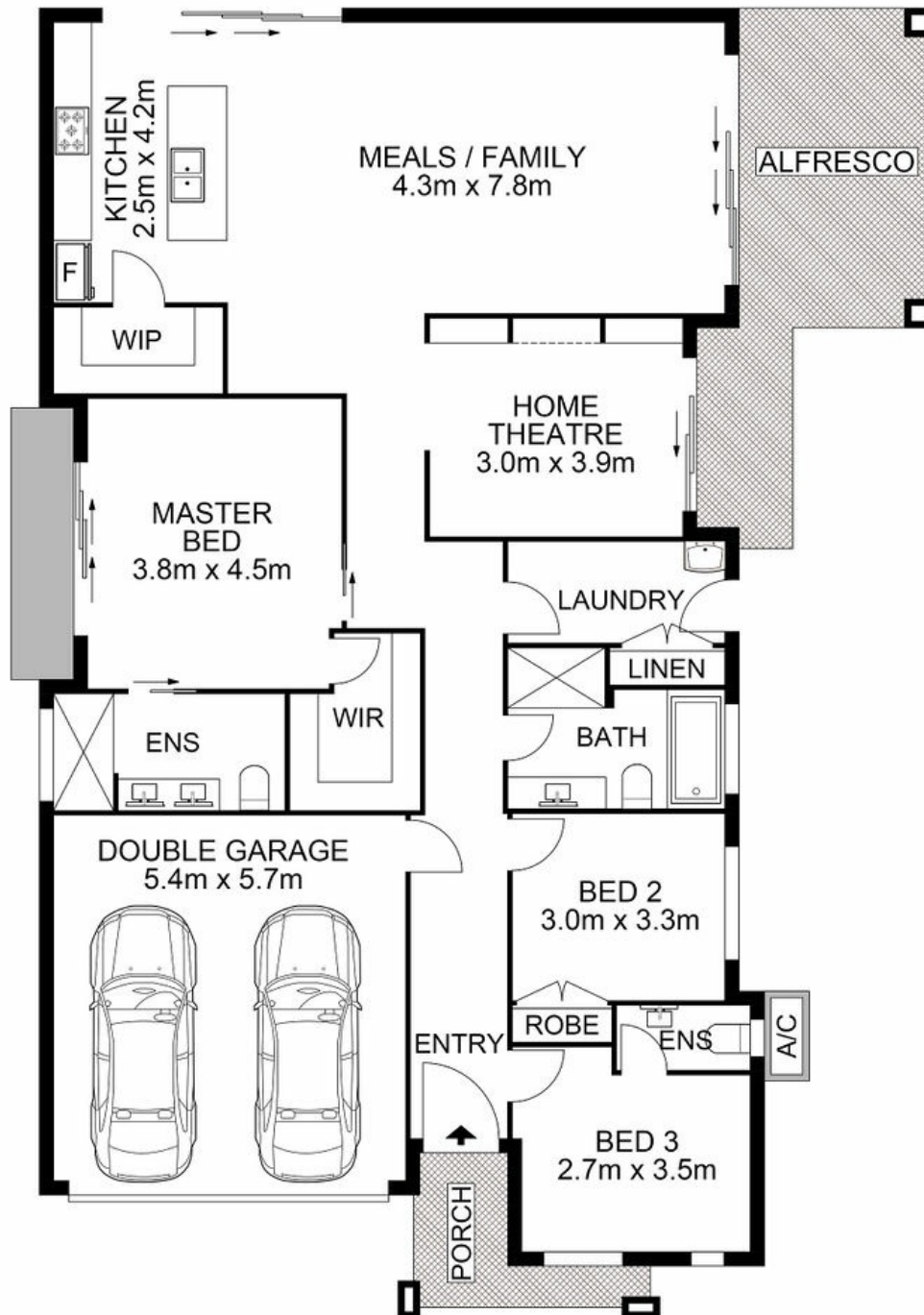
3 BED | 2 BATH | 2 CAR

PRICE:
\$875,000

OPEN FOR INSPECTION:
N/A



Bobby Reynolds
0432173566
bobby.reynolds@atrealty.com.au
agencycentralwilton.com.au



 AGENCY

Disclaimer: Please note this floor plan is for marketing purposes and is to be used as a guide only. All dimensions are estimates only and may not be exact measurements.

28 Sutton Crescent, Wilton

Bobby Reynolds All measurements are approximate • Drawn for marketing purposes only
 0432173566
 bobby.reynolds@atrealty.com.au
 agencycentralwilton.com.au

