

**SOLD**

## GREAT HOME WITH SIDE ACCESS AND BACKING ON TO PARK LANDS ROOM FOR FUR BABIES

This home is built on a generous 805 sqm block in a quiet cul-de-sac and backs on to park lands with entry through a private gate. Just a short walk will take you to the local shopping centre, Banksia Beach primary school, public transport and Bowling Club. It has four bedrooms, study, two bathrooms, separate lounge, open plan kitchen/dining room and double garage. An added bonus is the carport to the side of the home which provides accommodation for a boat or campervan.

Walking through sliding doors at the rear of the home you will find a large outdoor entertainment area which runs the length of two sides of the home and overlooks the back yard and swimming pool. There is a gate built in to the rear fence which leads through to park lands and provides quick access to nearby facilities. This is a great place to entertain family and friends. Look at these additional features:

- Reverse cycle air conditioning to living areas & master bedroom
- Carport to side access suitable for a boat or campervan
- 1.5 kws solar power (approx.)
- Swimming pool
- 5 x 2.9 metre shed with double doors, lock up tool room and skylight

We do not expect this great home to last long on the market, so call Geoff (your local agent) on 0414 230 130 today to arrange your private inspection.

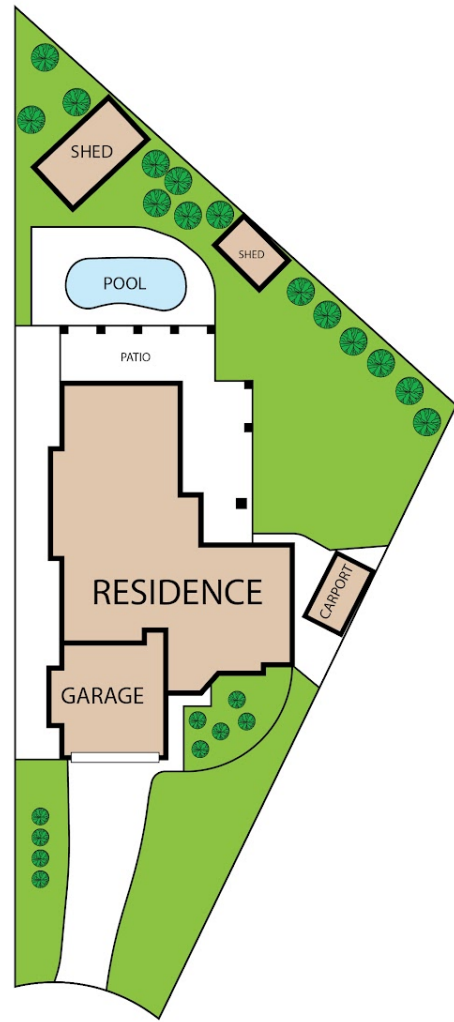
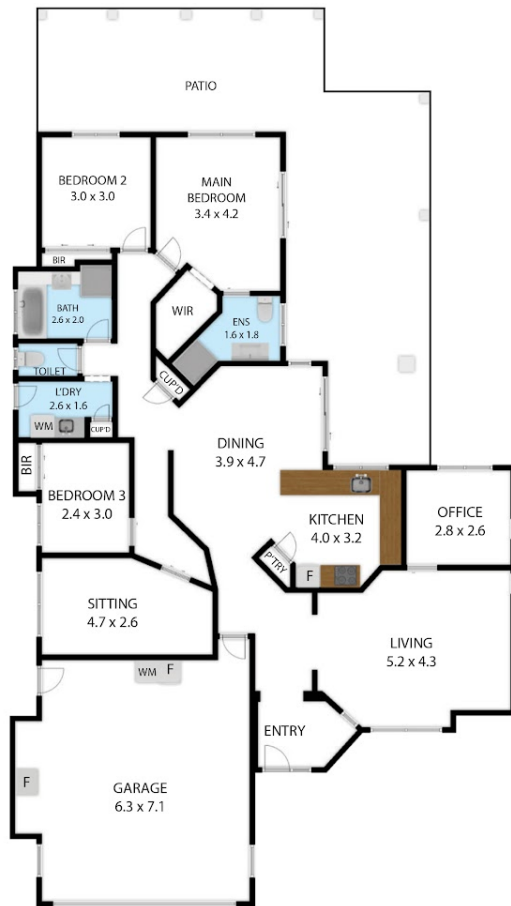
**4 BED | 2 BATH | 3 CAR**

**PRICE:**  
\$815,000

**OPEN FOR INSPECTION:**  
N/A



**Geoff and Rose Tutt**  
**0414230130**  
geoff@atrealty.com.au  
[www.atrealty.com.au](http://www.atrealty.com.au)



7 Leeward Place, Banksia Beach 4507

TOTAL APPROX. FLOOR AREA 191 SQ.M

Whilst every attempt has been made to ensure the accuracy of the floor plan contained here, measurements of doors, windows, rooms and any other items are approximate and no responsibility is taken for any error, omission, or misstatement. This plan is for illustrative purposes only and should be used as such by any prospective purchaser.

Disclaimer: Please note this floor plan is for marketing purposes and is to be used as a guide only. All dimensions are estimates only and may not be exact measurements.