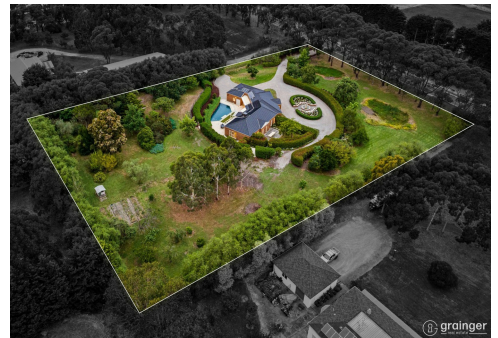


**229 SMITHS LANE, CRANBOURNE
SOUTH, VIC, 3977**



FOR SALE

THE PEACEFUL & PICTURESQUE LIFESTYLE YOU HAVE BEEN

4 | 2 | 2

This premium lifestyle property exudes luxury and ultimate family living at its finest, welcome to 229 Smiths Lane defining the meaning of a truly peaceful lifestyle property with beautifully picturesque, manicured gardens across 2.5 acres (approx.)

Exclusively positioned amongst a handful of house-proud neighbours, this private and peaceful residence greeted by the circular driveway with tranquil water feature welcomes you through the large double door entry into the grand entrance hall with high ceilings throughout the home. Off to the left the formal living and dining capturing light through the large windows is matched wholeheartedly by a casual family and meals domain at the rear creating a versatile floorplan and blend of informal and formal living spaces.

Making your way into the heart of the home, this timber finished kitchen is perfect for the chef of the family with brand new appliances including oven, induction cooktop and dishwasher. You will be delighted with ample storage, island bench space and a walk in pantry.

Comprising of three great sized bedrooms plus a study, the oversized master suite complete with a full ensuite with doors leading to the outside entertaining area. With the study attached, a perfect nursery or home office. The remaining two bedrooms serviced by the main bathroom which has been recently renovated with a freestanding bath and brand new timber and stone vanity.

PRICE: Contact Agent

OPEN FOR INSPECTION: N/A .

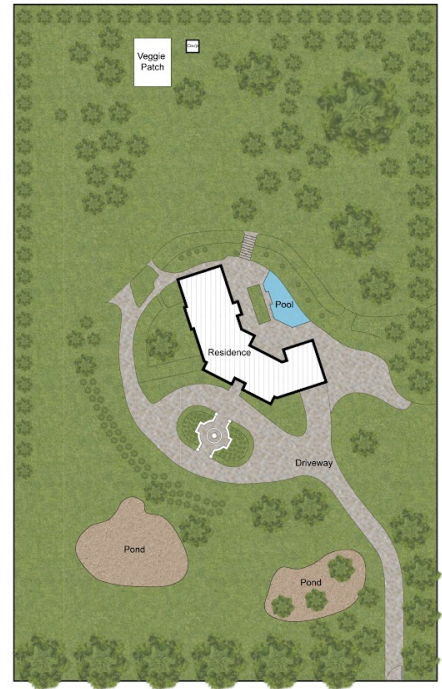
Emily Grainger | 0421929013 | emily@grealestate.com.au | www.grealestate.com.au

229 SMITHS LANE, CRANBOURNE SOUTH, VIC, 3977



229 Smiths Lane, Cranbourne South

3 Bedroom 2 Bathroom 2 Car Garage



While every attempt has been made to ensure the accuracy of the floor plan contained here, measurements of doors, windows, rooms and any other items are approximate and no responsibility is taken for any error omission or miss measurement. This plan is for illustrative purposes only and should be used as such by any prospective purchaser.



Disclaimer: Whilst every effort has been made to ensure the accuracy of these particulars, no warranty is given by the vendor or the agent as to their accuracy. Interested parties should not rely on these particulars as representations of fact but must instead satisfy themselves by inspection or otherwise.

Emily Grainger | 0421929013 | emily@grealestate.com.au | www.grealestate.com.au