



SOLD

LOCATION, SIZE & PRICE - THE PERFECT COMBINATION !

Be the next proud owner of this luxury Resort Styled Apartment that enjoys a North facing aspect across the Internal Lake.

Located on the third floor, this lovely residence has it all; views, security, privacy and absolutely nothing to spend or do - except move in and congratulate yourself on securing a unique property within the highly regarded complex of Ilanah Aqua.

Whether you are an Investor or owner occupier, acquiring an Ilanah Aqua Apartment has its rewards; almost non-existent vacancy rates and healthy rental returns are consistent with the excellent capital growth potential on our Northern Gold Coast as it continues expand & develop.

The entry level price point in this complex has been noticeably on the rise in recent months as Ilanah Aqua continues to be a "Destination of Choice". That trend is expected to continue so avoid any disappointment & secure what is clearly becoming a unique piece of real estate in this high growth area.

In Summary its many redeeming features:

- North Facing on the Lake & with Views to the Canal
- Third Floor, Lift Access to all floors from Basement Carpark
- Just two Apartments per Floor.
- Three spacious Bedrooms, Bedrooms 2 & 3 boast BIR's
- Master has WIR & Ensuite plus direct access to Waterfront Balcony.
- Bathrooms feature Floor to Ceiling Tiles & Large Showers
- Ensuite boasts Double Vanities, Large Shower + Freestanding Bath.
- Chef's Kitchen with Caesar Stone Bench Tops & Miele & Bosch Appliances
- Carpeted & Ceiling Fans throughout including the Balcony.
- Crimesh Screens & Blinds on all Window & Doors.
- Quality Floor to Ceiling Sheer Curtains in Living Room
- Downlights & Ducted Air Conditioning throughout.
- Gas Hot Water & Gas Cooking plus Gas BBQ Facility on Balcony
- Spacious Laundry with Ample Cupboard & Bench Space + Clothes Dryer

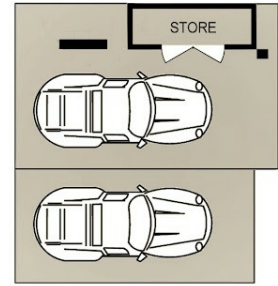
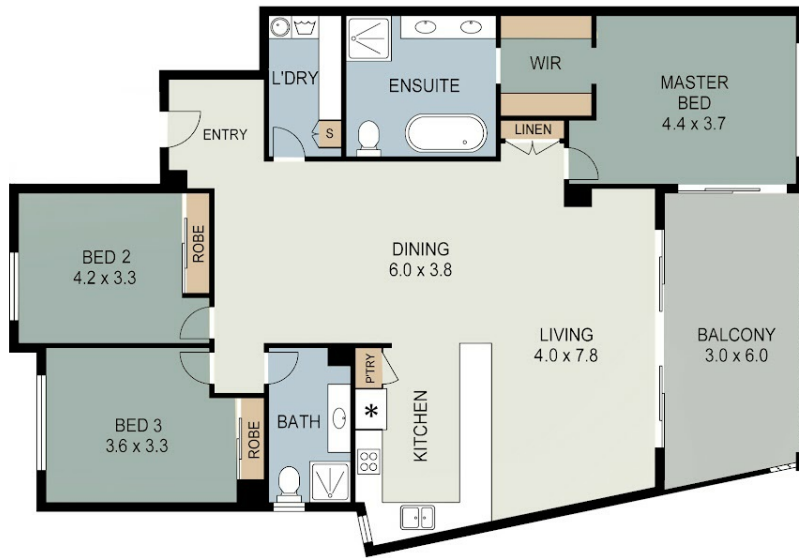
3 BED | 2 BATH | 2 CAR

PRICE:
\$920,000

OPEN FOR INSPECTION:
N/A



Lila Taylor
0415499935
lila@atrealty.com.au
[Lilas Website](#)



Secure Basement

234 / 3 Pendraat Parade, HOPE ISLAND

3 | 2 | 2 | Int : 156m²
Ext : 18m²
Total : 174m²

All measurements shown in metres are approximate and are for illustration purposes only. It should not be considered 100% accurate. Interested parties should rely on their own enquiries.

Disclaimer: Please note this floor plan is for marketing purposes and is to be used as a guide only. All dimensions are estimates only and may not be exact measurements.