



**SOLD**

## "STUNNING NEW HOUSE WITH BALCONY & WATER VIEWS - 1115M2!"

Welcome to your dream island home!

This stunning newly built home is the perfect place to start your island life.

Set on a huge double block of 1115 sqm, this home is perfect for those wanting to enjoy a relaxed island lifestyle with wonderful water views and gentle cooling breezes.

As you enter the home, you'll be welcomed by a spacious open plan layout, with modern built-in features. There's plenty of room to move, with lots of natural light, generous water views from the master bedroom, kitchen, dining and of course the fabulous deck.

Each bedroom is perfect in size, the master with a large walk in robe and roomy ensuite. The second bedroom has a large built-in cupboard. Ceiling fans are located throughout the bedrooms, living and dining areas. A sliding glass door leads onto the balcony from the master bedroom. Quality curtains adorn the windows in the bedrooms and lounge. The kitchen is a chef's delight with heaps of cupboard space and a large island bench for meal preparation combined with dining capabilities.

The outdoor area is truly something special. A large deck area allows you to fully appreciate the beauty of the island's surroundings. Spend your days lounging, entertaining or take in the views while you enjoy a morning coffee.

With only a 2 minute drive to Wahine Boat Ramp, I'm sure a boat will be on the shopping list! There's plenty of room for a shed and extra parking space.

Move in ready! Start enjoying the island lifestyle as soon as possible. A short 8 minute drive to our brand new state of the art Ferry Terminal, which will have you at Redland Bay in 20 minutes, allowing just enough time to enjoy our beautiful water ways.

If you're looking for a home on a stunning island with plenty of space to relax and entertain, then this is the perfect property for you. With beautiful views, plenty of space, room for a veggie garden and a great location, this is a once-in-a-lifetime opportunity!

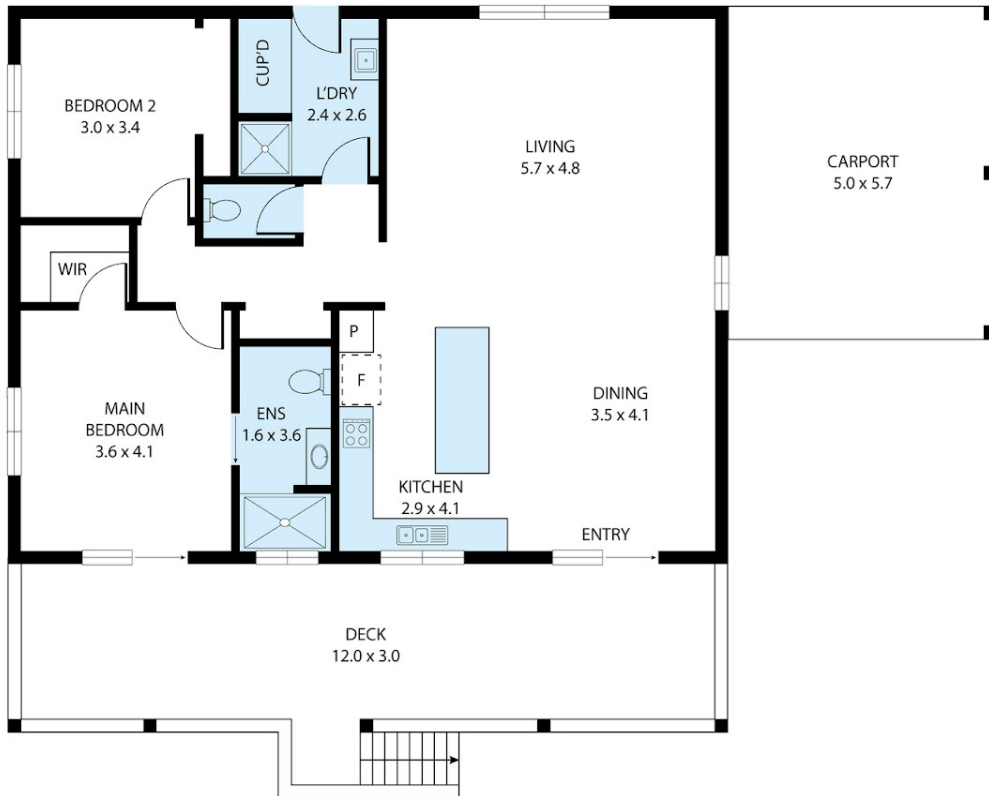
2 BED | 2 BATH | 1 CAR

PRICE:  
\$440,000

OPEN FOR INSPECTION:  
N/A



**Darren Leigh**  
**0422832537**  
darren@atrealty.com.au  
[www.atrealty.com.au](http://www.atrealty.com.au)



18 Highland Ridge Road, Russell Island 4184

TOTAL APPROX. FLOOR AREA 116 SQ.M

Whilst every attempt has been made to ensure the accuracy of the floor plan contained here, measurements of doors, windows, rooms and any other items are approximate and no responsibility is taken for any error, omission, or misstatement. This plan is for illustrative purposes only and should be used as such by any prospective purchaser.

Disclaimer: Please note this floor plan is for marketing purposes and is to be used as a guide only. All dimensions are estimates only and may not be exact measurements.