




# FOR SALE

3  | 2  | 2 

24/29 ELLIS DRIVE, MUDGEERABA, QLD, 4213



**SANDRA LIEBENBERG**  
PROPERTIES GOLD COAST



## AN EXCEPTIONAL VILLA WITH AN ABUNDANCE OF SPACE

The first thing you notice as you enter this single level home is the abundance of space with an impressive floor plan separating the living area from the bedrooms.

Situated in the highly desired and ultra-convenient gated 'Poinciana Vistas' complex, this three-bedroom single level home features spacious open plan living/dining leading to large outdoor alfresco and fully fenced sunlit yard ready for you to make your mark that delivers flexible options for relaxing, dining and entertaining family and friends.

Three generous bedrooms, 2 bathrooms and oversized double garage creates the ideal home for owner-occupiers or savvy investors with an excellent rental return.

Perfectly located to all main stream amenities such as; The Robina Town Centre, The Robina and Varsity Train Stations and Hospital plus some of the best private and public schools on the Gold Coast including; Somerset College, King's Christian College and Clover Hill State School with the M1 only minutes away

### Property Extras:

- . 'Poinciana Vistas' situated in the Glenwood Park Estate
- . Spacious open plan living/dining/kitchen and plenty of bench space and storage
- . Single level/ 3 bedrooms / 2 Bathrooms
- . Master bedroom provides ensuite and walk-in wardrobe
- . Double garage with extra parking for 2 more vehicles out front
- . Internal access garage with auto door

**Sandra Liebenberg // 0437081639**




sandra@slpropertiesgc.com.au // [www.slpropertiesgc.com.au](http://www.slpropertiesgc.com.au)



**PRICE:**  
Offers Over \$770,000

**OPEN FOR INSPECTION:**  
N/A

# FOR SALE

3  | 2  | 2 

24/29 ELLIS DRIVE, MUDGEERABA, QLD, 4213



**SANDRA LIEBENBERG**  
PROPERTIES GOLD COAST

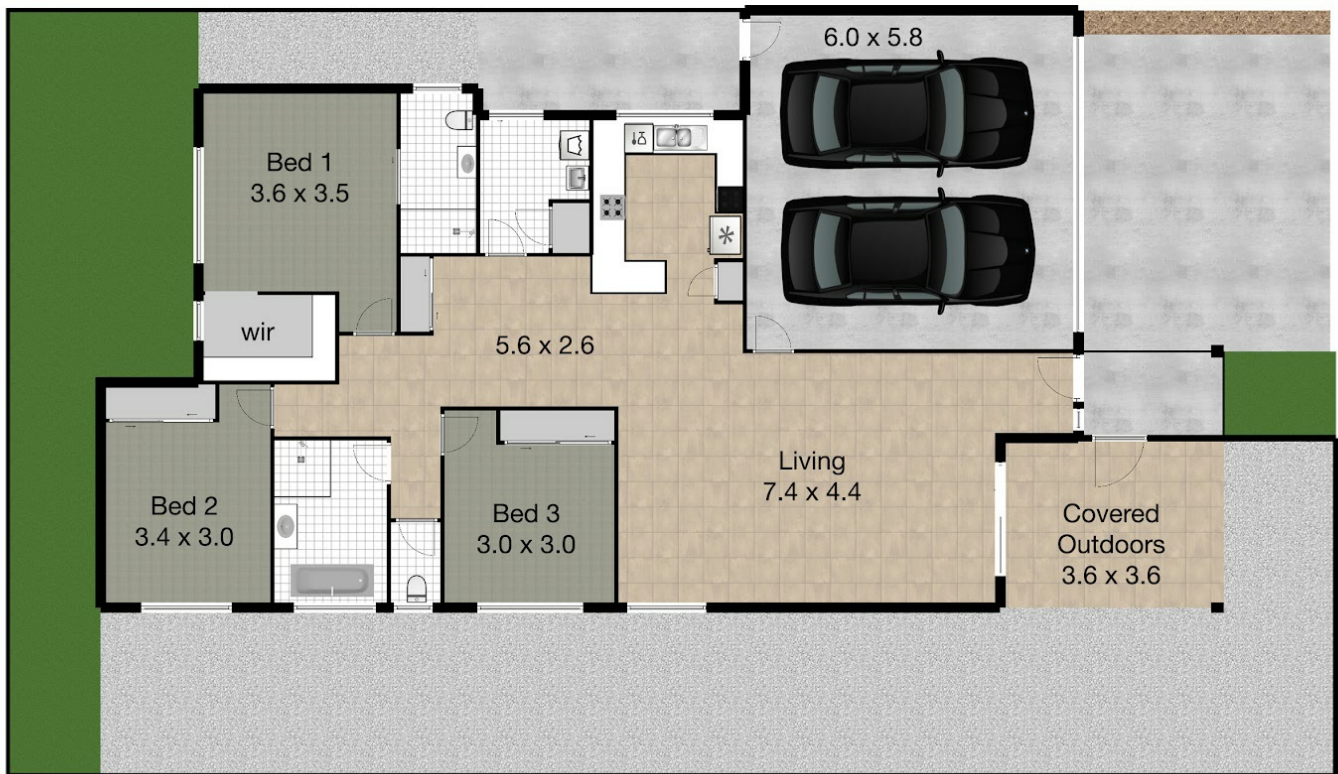
## Villa 24 - 29 Ellis Drive Mudgeeraba 4213

Bedroom 3 - Bathrooms 2 - Living 1 - 2 Garage

Total approximate covered Floor Area 166m<sup>2</sup> - Land Area 379m<sup>2</sup>



**SANDRA LIEBENBERG**  
PROPERTIES GOLD COAST



Whilst every attempt has been made to ensure the accuracy of the floor plan. Measurements of doors, windows rooms and any other items are approximate and no responsibility is taken for any error, omission or misstatement. This plan is for illustrative purposes only and should be used as such by any prospective purchaser.

**Sandra Liebenberg // 0437081639**

sandra@slpropertiesgc.com.au // [www.slpropertiesgc.com.au](http://www.slpropertiesgc.com.au)