



SOLD

CHARACTER HOME ON A HUGE ALLOTMENT

Character home on a huge allotment.
What a fantastic opportunity to buy a character home with dolomite frontage and ornate features. This Character homes oozes, turn of the century charm.
Set on a huge allotment with opportunities such as swimming pool, tennis court, more shedding or Development SCA.
There are three generous bedrooms the main with feature bay window.
Country style kitchen, plus formal lounge and feature open fireplace. A second living room gives the owners the space to entertain.
The Carpets are ready for the next owner to pull up, and discover the timber floors which could be polished and bought back to their original best.
The outside is well established with large, paved areas double Colourbond garage, plus garden shed and woodshed.
Located close to Bunnings, the popular market place shopping centre and the Mount Gambier Hospital, makes this a great investment.
The Allotment measures 2,384 Sq/m which is nearly 4 times the size of a normal allotment.
Perfect for the young family to extend the home or develop the yard for family activities. Maybe the tradie looking for room to run his small business.
Inspection Recommended.

RLA 269823

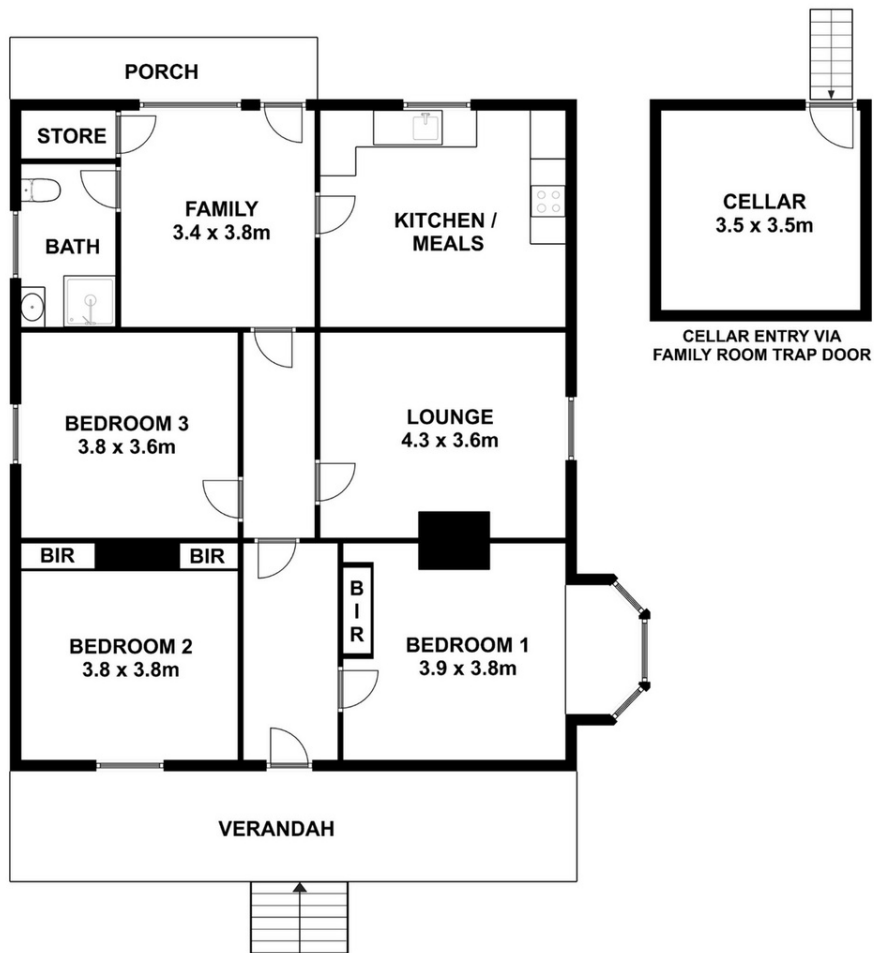
3 BED | 1 BATH | 2 CAR

PRICE:
\$420,000

OPEN FOR INSPECTION:
N/A



Peter Dempsey
0418854393
peterdempsey@atrealty.com.au
peterdempseyatrealty.com
RLA: 269823



This drawing is for illustration purpose only. All measurements are approximate only and information intended to be relied upon should be independently verified.

Disclaimer: Please note this floor plan is for marketing purposes and is to be used as a guide only. All dimensions are estimates only and may not be exact measurements.