



**SOLD**

## QUALITY RENOVATION + PRIVACY + A SECRET GARDEN - ON 821M2

Open Tuesday 11th 5.00-5.30

Teresa Cawte, your @realty agent welcomes you to 8 Speedy Close, Bentley Park, a beautiful home in the perfect location.

This three-bedroom, two-bathroom home is the ideal property for any family or individual seeking to enjoy a private lifestyle and the calming ambience of plants. The entire property is laced with a meticulously groomed garden which soothes everyone's soul.

This lovely home is nestled in the heart of a tranquil elevated residential area, a popular and sought after street amongst the locals.

The location is unbeatable, with easy access to highways and daily conveniences at the local shopping village.

As you enter the home, you are presented with a soothing, homely and pleasing coastal feel. The kitchen is well-equipped with a plumbed-in fridge and dishwasher overlooking the lovely glass fenced pool and outdoor tiled patio.

The master bedroom features a built-in wardrobe, a high quality renovated ensuite while the two remaining bedrooms are both well-sized and comfortable. The main bathroom is also delightfully renovated and is a very comfortable size.

Indulge yourself with the large outdoor patio area overlooking the lovely pool and garden. Spend your days lounging in the pool or entertaining friends in the shade with picturesque gardens as your backdrop.

- Features:
- New Roof
  - New Solar Panels (16 panels with 6.63kw)
  - New Main bathroom
  - New Ensuite
  - New Laundry

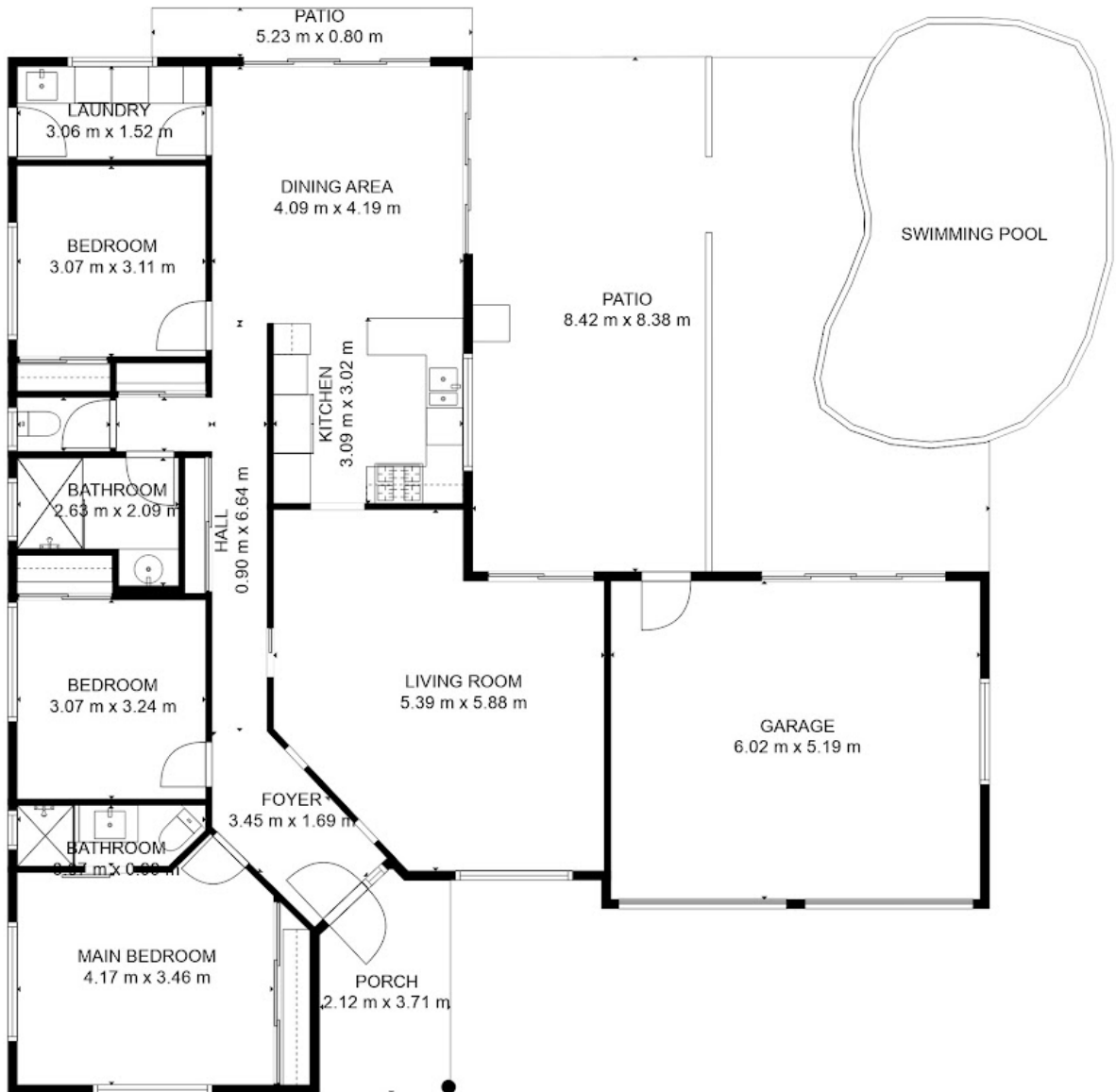
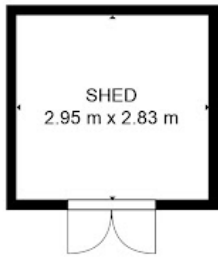
3 BED | 2 BATH | 2 CAR

PRICE:  
\$562,500

OPEN FOR INSPECTION:  
N/A



**Teresa Cawte**  
**0413209810**  
teresacawte@atrealty.com.au  
[www.atrealty.com.au](http://www.atrealty.com.au)



Disclaimer: Please note this floor plan is for marketing purposes and is to be used as a guide only. All dimensions are estimates only and may not be exact measurements.

## FLOOR PLAN

Teresa Cawte  
0413209810  
teresacawte@atrealty.com.au  
[www.atrealty.com.au](http://www.atrealty.com.au)

Plan is not to scale and is indicative of layout. It is for illustrative purposes only. All room sizes and dimensions shown on this plan, including, but not limited to, doors, windows, cabinets are approximate. Property Shots Australia gives no guarantee to the accuracy of the document.

