



**SOLD**

## DELIGHT IN DAWSVILLE UNDER OFFER

BUILT IN 1998 4 BED 2 BATH 200M2 LIVING 800M2 LAND

This tranquil oasis is sure to appeal to those needing space for a boat, caravan, trailer and carS or all the above!

With the numerous toys you will need a workshop to tinker? How about a 6.5m X 6.5m workshop with 3 phase. The triple car width driveway gives access to the side plus double car garage with access through to the enormouse gabled patio.

Enter through the front door and you have the master suite with a wall full of wardrobe and a generous ensuite with screened in shower. For the shift worker there are roller shutters on the master windows and a split system for warmth in winter and cool in summer plus a retreat. Opposite the master is the formal lounge, newly carpeted with large windows allowing the natural light plus the added bonus of a split system air conditioner.

The perfect home for the larger family with the generous kitchen featuring electric cooktop and stove, dishwasher, walk in pantry, double fridge recess and shoppers entry. There is a great family and dining room housing a slow combustion wood heater and a split system, this opens up to the games room with vaulted ceiling.

The rear bedrooms are connected to the activity room 2 with built in robes and the third being queen size with a walk in robe. All the bedrooms have ceiling fans and there are LED down lights throughout the home. Here you will also find the laundry with built in cupboards and benchtop, the second bathroom has a screened in shower and separate tub.

All this plus your own fresh produce herbs, cucumbers, tomatoes, chilli, lemon, lime and a monster avocado tree. The large chicken coop can come with or without the chooks - currently laying 8 eggs per day. All of this backs on to the nature reserve and is approx 300 meters to the estuary.

32 solar panels with 5.3kw  
reticulated gardens  
tiled throughout  
water filter to kitchen  
4 split system A/C units

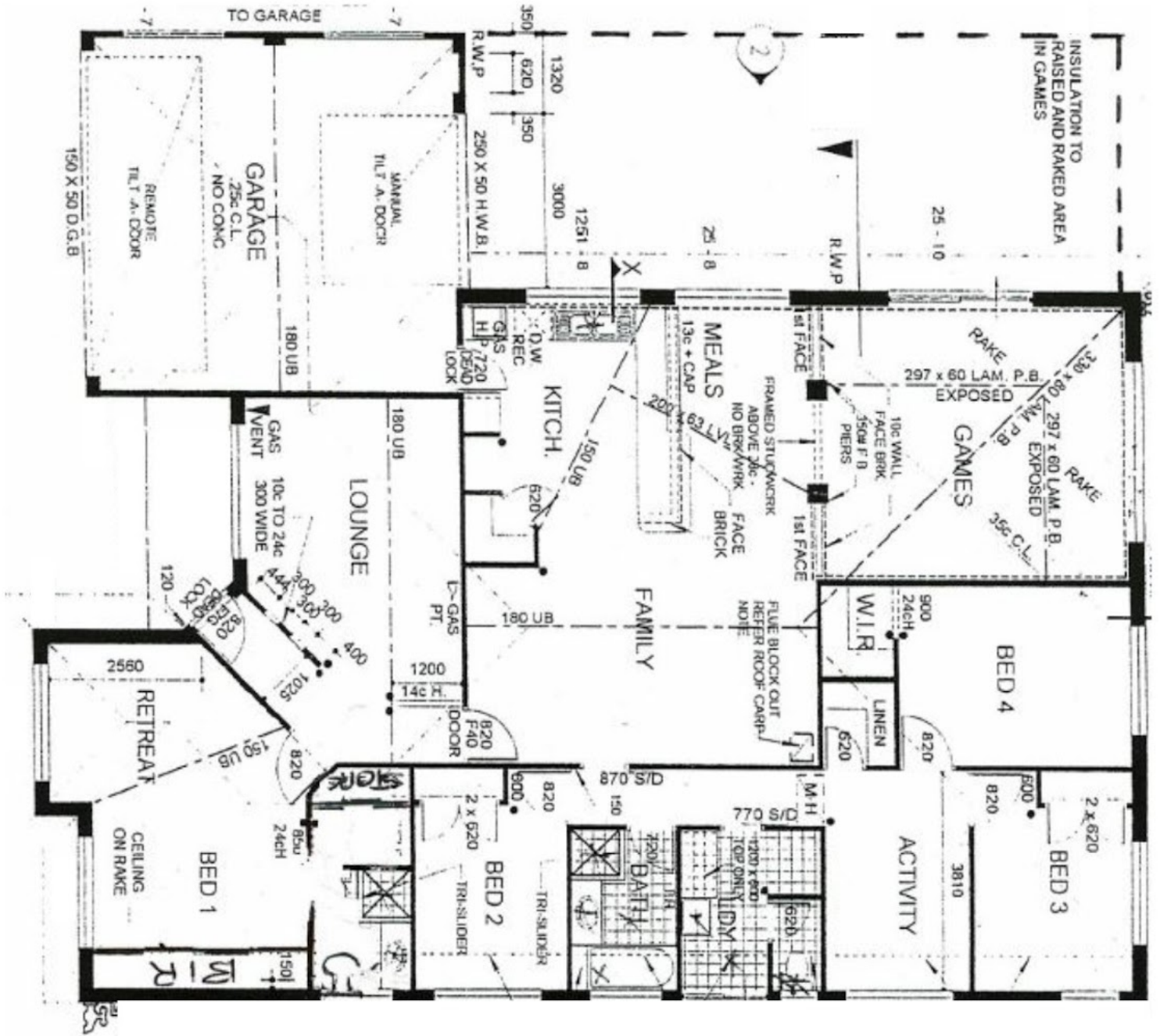
4 BED | 2 BATH | 4 CAR

PRICE:  
\$572,000

OPEN FOR INSPECTION:  
N/A



**Liz Smith**  
**0431926144**  
lizsmith@atrealty.com.au  
[www.atrealty.com.au](http://www.atrealty.com.au)



Disclaimer: Please note this floor plan is for marketing purposes and is to be used as a guide only. All dimensions are estimates only and may not be exact measurements.