



**SOLD**

**THIS EXTREMELY STYLISH HOME WOULD SUIT THE MOST FASTIDIOUS OF BUYERS LOOKING FOR QUALITY AND LOCATION! - A "MUST SEE"**

This spacious 26.155sq home ticks all the boxes! If you are looking for spacious open plan living, high ceilings, and quality fixtures and fittings, then this may just be the property you have been looking for! Location is superb, just a short drive to all that Tin Can Bay has to offer including The Country Club, Shops, Doctors, and the stunning Tin Can Bay Foreshore. Other features and benefits include:-

- \* 4 bedrooms, the master being extremely spacious (4m x 6m), and with a very cleverly designed ensuite with floor to ceiling tiles!
- \* Separate Media Room
- \* Stunning chef's delight kitchen with dishwasher and 900mm gas cooktop
- \* Soaring ceilings, with clever use of louvres for cross flow of ventilation
- \* !0,000 litre water tank (which runs the toilets and laundry) + 5kw solar panels (19 panels) saving you \$\$\$
- \* Bifold doors in lounge bringing the outside in!
- \* Porcelain tiles throughout
- \* A great shed to the side of home 6 x 6 (which includes the verandah - ideal for a workshop or storage.

This really is a lovely home that deserves your inspection. For your private viewing call Janet Young anytime!

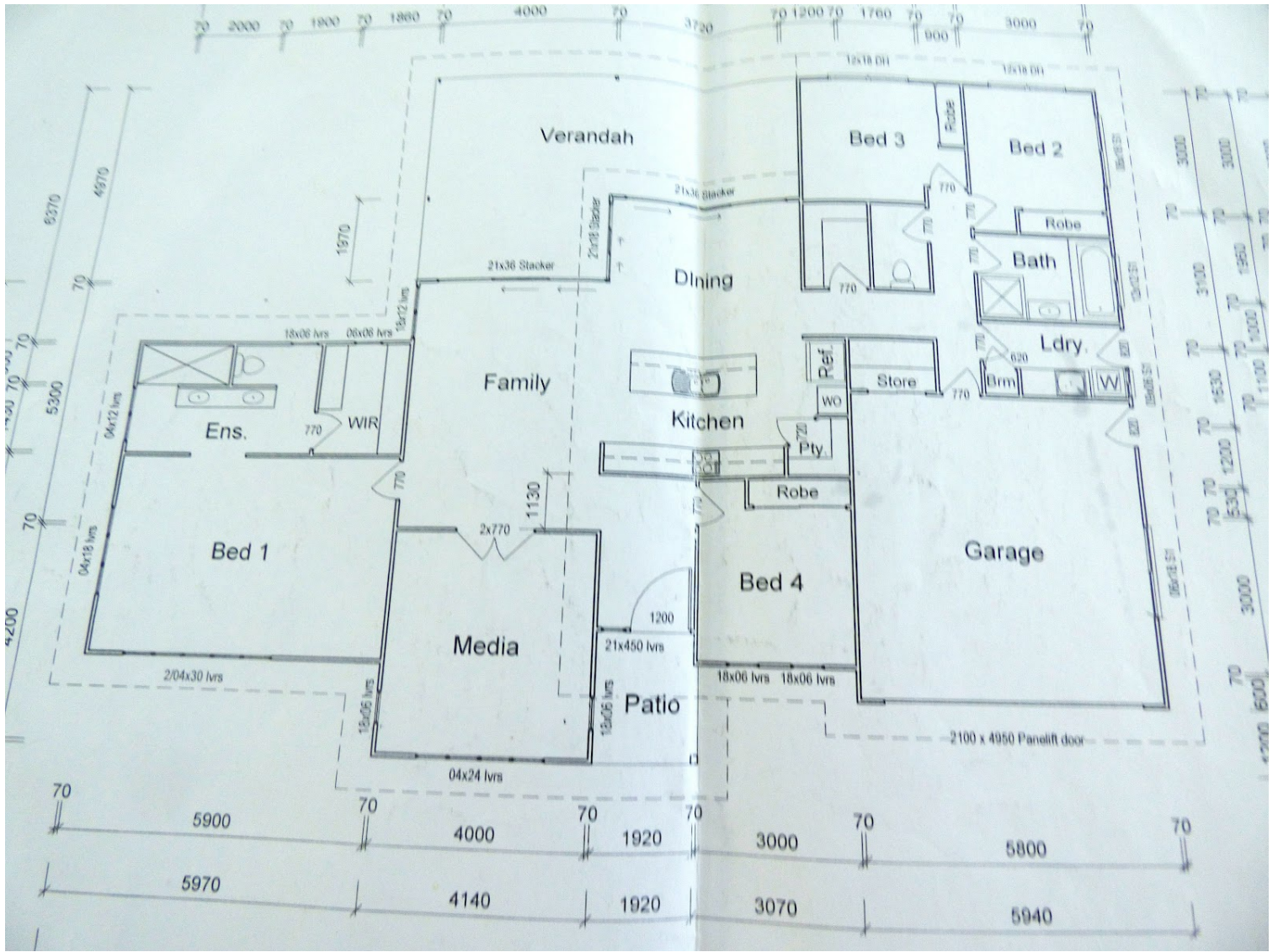
**4 BED | 2 BATH | 2 CAR**

**PRICE:**  
\$745,000

**OPEN FOR INSPECTION:**  
N/A



**Janet Young**  
**0438587239**  
janet@atrealty.com.au  
[www.atrealty.com.au](http://www.atrealty.com.au)



Disclaimer: Please note this floor plan is for marketing purposes and is to be used as a guide only. All dimensions are estimates only and may not be exact measurements.