



**SOLD**

## DISCOVER THE PERFECT BALANCE OF LIFESTYLE

Welcome to modern living in the heart of Salisbury.

This two bedroom, one bathroom unit offers a unique combination of convenience and style, making it the perfect place to call home. Situated in a quiet, yet vibrant suburb, you'll have access to all the amenities Salisbury has to offer.

Upon entering the unit, you'll find a spacious, open-plan living area with plenty of natural light.

The contemporary kitchen features a gas cooktop oven plus overhead cupboards.

The two bedrooms both with built-in wardrobes.

If you're looking for outdoor space, you'll love the alfresco entertainment area an ideal spot to relax and entertain.

The property is currently tenanted at \$280.00 per week

Year built 1978

Council rates \$1,095 per annum (approx.)

Strata levy \$422.40 per quarter (approx.)

RLA 269823

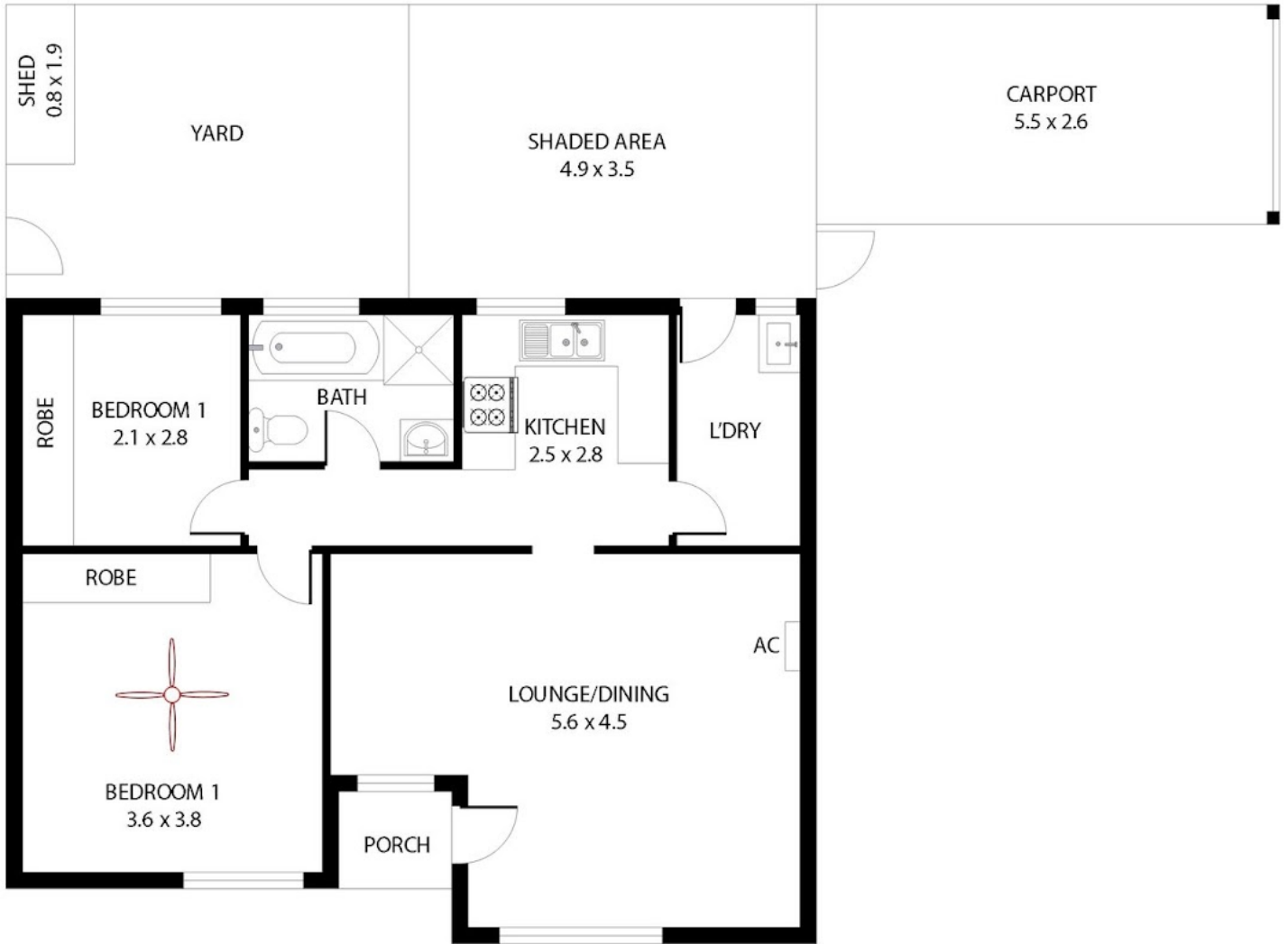
2 BED | 1 BATH | 1 CAR

PRICE:  
\$280,000

OPEN FOR INSPECTION:  
N/A



**Darren Bayford**  
**0403776577**  
dbayford@atrealty.com.au  
[www.atrealty.com.au](http://www.atrealty.com.au)  
RLA: 269823



117m<sup>2</sup> 65m<sup>2</sup> 18m<sup>2</sup> 2m<sup>2</sup> 15m<sup>2</sup> 15m<sup>2</sup> 2m<sup>2</sup>

Disclaimer: Please note this floor plan is for marketing purposes and is to be used as a guide only. All dimensions are estimates only and may not be exact measurements.

Whilst every attempt has been made to ensure the accuracy of the floor plan contained here, measurements of doors, windows, rooms and any other items are approximate and no responsibility is taken for any error, omission, or misstatement. This plan is for illustrative purposes only and should be used as such by any prospective purchaser.

**Darren Bayford**  
 0403776577  
 dbayford@atrealty.com.au  
[www.atrealty.com.au](http://www.atrealty.com.au)

