



FOR SALE

PEACEFUL: VIEWS: CONVENIENT

Here is an opportunity to have your own 'Patch of the Peninsula'! This 'strata unit' is located at the evolving Tasman Eco Village. Formerly a resort including golf course, its now the home to a vibrant community who look out for each other. Its central to all services and facilities. In fact everything you need is within immediate walking distance.

Unit 10 features:

a quiet area (no vehicles), close to all village communal facilities. A southern courtyard including herb garden at the front and at the rear a north facing deck with rural views and parking space.

Also available is external storage cabinet.

The Besser block walls ensure your continued quiet enjoyment of the unit.

Inside this cosy two-bedroom unit 'earth wool insulation' is in the roof cavity.

The bathroom & laundry area has been recently renovated.

Both bedrooms feature built in robes.

Outside there are a few vantage points to view Parsons Bay in the distance.

2 BED | 1 BATH | 0 CAR

PRICE:

Contact agent

OPEN FOR INSPECTION:

N/A

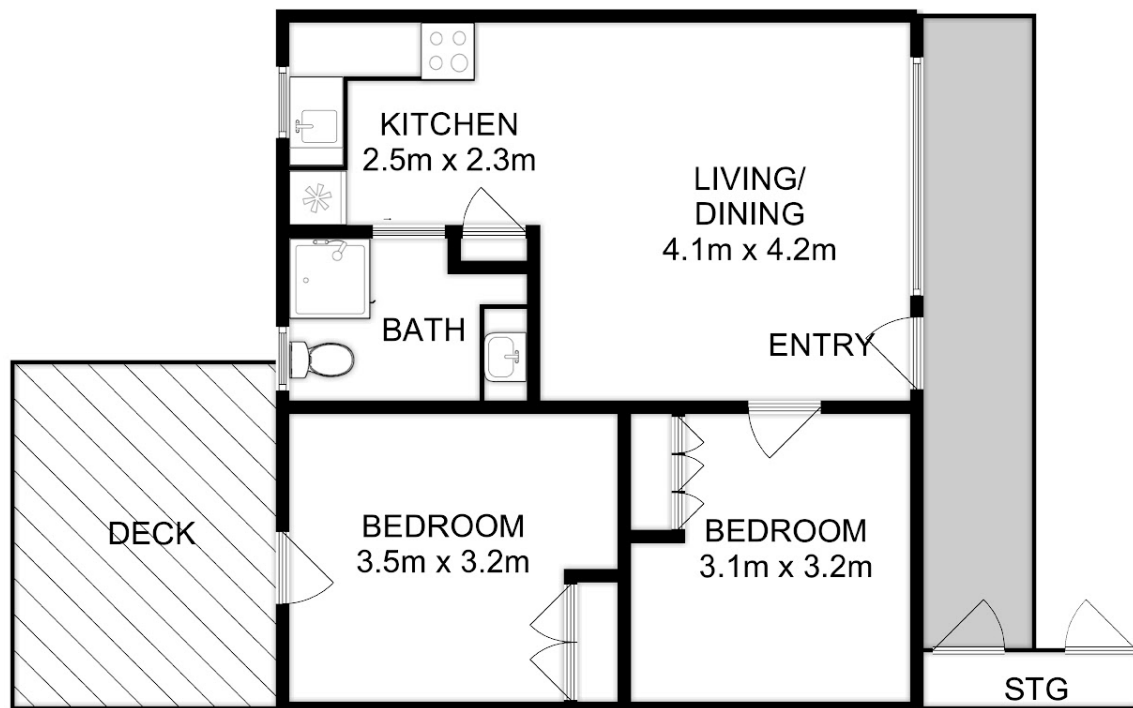


Adrian Whelan

0488753730

apc.whelan@atrealty.com.au

www.atrealty.com.au



Total Approx. Floor Area : 57 sqm

All measurements are internal and approximate.
This plan is a sketch for illustration, not valuation.
Produced by Open2view.com

Disclaimer: Please note this floor plan is for marketing purposes and is to be used as a guide only. All dimensions are estimates only and may not be exact measurements.