



SOLD

HOME OPEN CANCELLED DREAMY DAWESVILLE WITH A HUGE SHED

Nestled in the picturesque hills of Dawesville, you can enjoy beautiful sunsets and treetop views from your indoor or outdoor entertainment area.

This spectacular 4-bedroom, 2-bathroom is light, bright and spacious and ready for you to call home. Located on a Quiet corner block with additional side access parking ensures your family's privacy, while the huge 6 by 8 meter shed with lean-to are perfect for all the outdoor toys. The garage with shopper entry is above average height to accommodate the larger car/4x4

Upon entering there is a tiled entry, formal lounge and dining which can be closed off from the family and kitchen. The large master bedroom has a beautiful bay window to overlook the low maintenance front gardens, there is a full length walkin robe and en suite.

The light and airy open plan family, dining kitchen and games room are all tiled just waiting for you to fill it with family and friends. A good sized kitchen with plenty of bench space, high end appliances, walk in pantry you can be part of the family while entertaining or cooking up a storm.

The bedroom wing has 3 generous bedrooms 2 of which have walk in robes, serviced by the second bathroom featuring modern light tiling and a glass screened shower.

Additionally, the house is equipped with ducted evaporative cooling. For those cold winter nights, the house also has 2 gas bayonets for heating in winter however being perfectly positioned you can have a beautiful breeze circulating through the home. Solar panels assist with the electric bills.

With multiple areas out and around the home you can follow the sun with picturesque reticulated gardens all day long. For the larger gatherings the elevated patio is sheltered however letting in a gentle breeze while you sit relaxing enjoying life and treetop views. The workshop is a dream with fitted shelving and a block hoist, fully paved there is ample parking for the cars, boat, caravan and trailer.

FEATURES

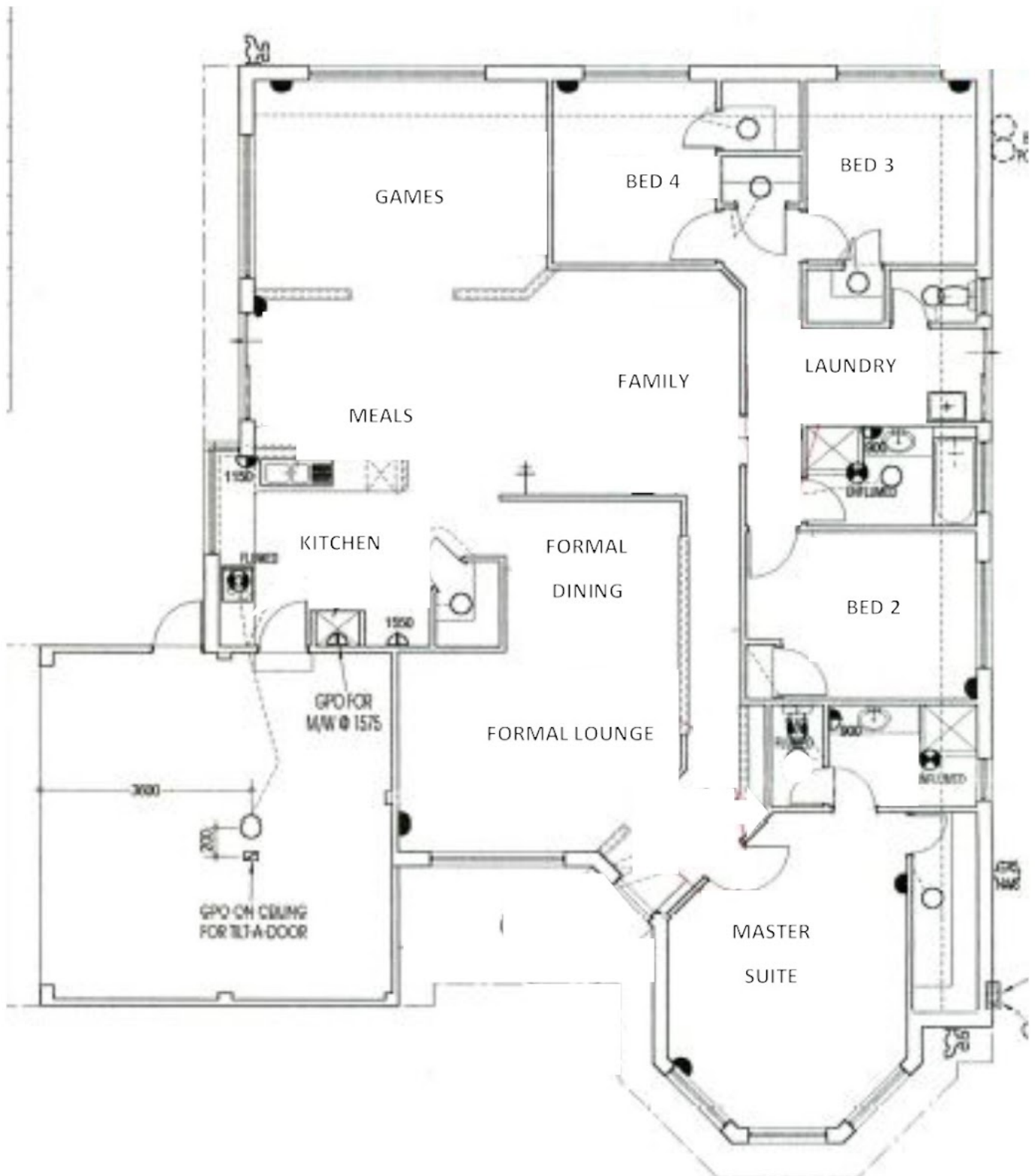
4 BED | 2 BATH | 2 CAR

PRICE:
\$570,000

OPEN FOR INSPECTION:
N/A



Liz Smith
0431926144
lizsmith@atrealty.com.au
www.atrealty.com.au



Disclaimer: Please note this floor plan is for marketing purposes and is to be used as a guide only. All dimensions are estimates only and may not be exact measurements.