

SOLD

**UNDER CONTRACT. 'OFFERS OVER \$575,000'.
QUAINT EASTSIDE COTTAGE WITH A
DELIGHTFUL MODERN TWIST INTERNALLY.
SHORT WALK TO PARKS & EXCELLENT
COFFEE.**

UNDER CONTRACT.
Too late ... it's GONE!

An opportunity to secure your own piece of east Toowoomba paradise... in an ultra-convenient, 'hidden-gem' street, just 200 metres to the fine coffee establishments, Burrow or Wendland Fine Foods!

Uber cute, comfortable cottage – totally rejuvenated around 10 years ago with excellent workmanship, fittings and finish – filled with charm, personality and many modern amenities.

Super neat galley style kitchen – sparkling granite benchtops with sleek two-pac cabinetry, ceramic cooktop, under bench wall oven, dishwasher, absolutely loads of cupboards, pot drawers and storage.

Three great relaxation spaces ...

An east facing sunroom for a morning cuppa or an afternoon snooze, a neat dining/living area PLUS a superb large, covered hardwood timber deck with expansive views over the twinkling City lights.

All three (3) spacious bedrooms have good size, functional built-ins - main with ceiling fan.

The gleaming bathroom has been totally updated with floor-to-ceiling wall tiling, modern fittings including a deep-soaker bath with shower over.

Cleverly hidden European separate laundry in a cupboard on the deck.

Sparkling high grade timber floors through the living area & carpet in all bedrooms.

Classic features include high ceilings, vertical joints (VJ) walls and timber casement windows with highlight coloured class panels.

Plantation shutters throughout ... and the electrical wiring & switchboard and all plumbing was updated when the renovations were done. Compliant smoke alarms now installed. There are security screen front and rear doors.

Fully fenced, level 764sqm allotment with the original single car garage & workshop and easy-care, established gardens

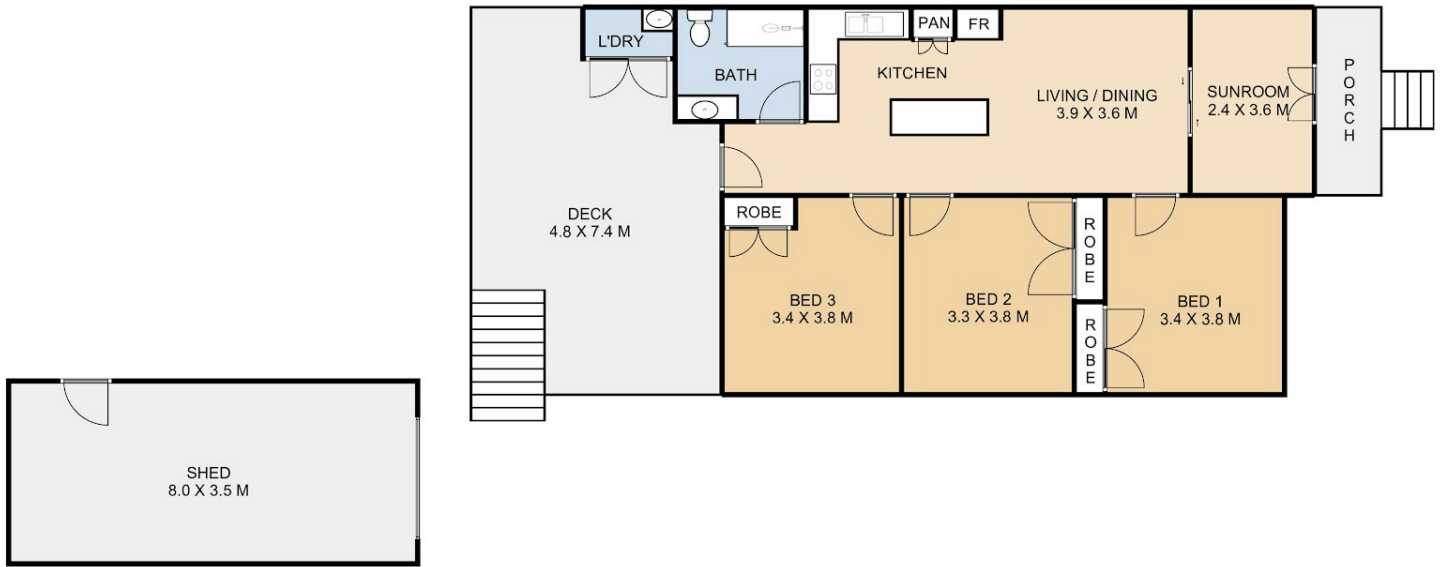
3 BED | 1 BATH | 1 CAR

PRICE:
\$656,100

OPEN FOR INSPECTION:
N/A

@realty

Ian O'Donnell
0409348238
ianohh@atrealty.com.au
www.atrealty.com.au



5 Trevelth Street, **Mount Lofty**

This plan is for representational purposes only. All dimensions displayed are approximate and shouldn't be solely relied upon. Floorplan by Statik Illusions.



 Internal **90m²** External **58m²** Total **148m²**

Disclaimer: Please note this floor plan is for marketing purposes and is to be used as a guide only. All dimensions are estimates only and may not be exact measurements.