



FOR SALE

SOUTH CITY BEACH | IMMACULATE SEASIDE COTTAGE + GARDEN STUDIO | LARGE MANICURED GARDENS

SOUTH CITY BEACH
IMMACULATE SEASIDE COTTAGE + GARDEN STUDIO
LARGE MANICURED GARDENS

Only 250 homes exist, nestled in the dunes, oceanside of the highway in South City Beach. This residential precinct is the closest beach in Perth to the heart of Perth City and the St Georges Terrace engine room of the Western Australian economy and is cocooned against the shoreline by the wonderful interconnected green reserves of Swanbourne SAS Reserve, Cottesloe Golf Club, Bold Park Bush Reserve and the iconic network of City Beach oceanfront football ovals. There is daylight between the South City residential enclave and the next closest houses to the City Beach beachfront.

This immaculate home is your best chance to move in, unpack your bags and start living the amazing South City Beach lifestyle today! Swim in the Indian Ocean daily, you're so close you will even have time when you are running late for your first appointment! Walk through the underpass to the Bold Park Bushlands and get your back-to-nature fix in amongst virgin bushland and Tuart forest. While away some time on your sweeping private rear veranda overlooking the gorgeous mature gardens that are such a feature of this home. Should you ever need to extend this house this veranda would seem very suitable for enclosing for a sunroom/conservatory etc.

Completely level itself and set amongst perfectly level landscaped European gardens this well designed light flooded mid 60's home has had an exquisite contemporary renovation such that everything is modern and up to date. You will love the way the dappled sunlight through the beautiful mature shade trees dances from the outdoors to uplift your indoor experience and brings such a delightful presence.

Artists and "work from homers" will love the light flooded studio in the back corner of the garden. A wonderfully peaceful environment to energise the creative juices and generate some quality output.

4 BED | 2 BATH | 2 CAR

PRICE:
Under | Offer

OPEN FOR INSPECTION:
N/A



Scott Swingler
0403344649

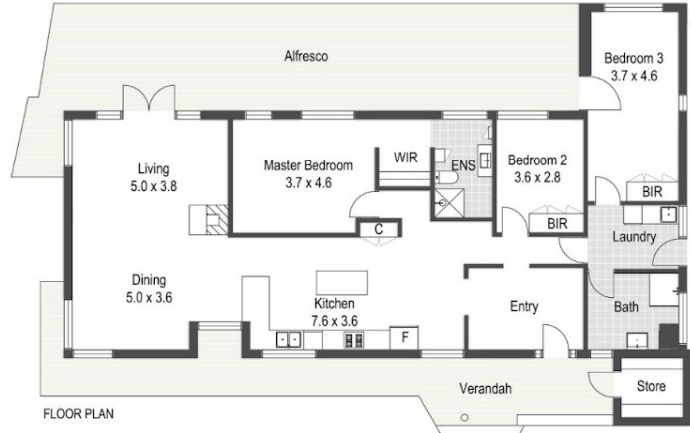
scott@shore-property.com.au
Shore Property



Approximate Areas

Ground Floor	176 m ²
Carport	45 m ²
Studio	19 m ²
Verandah	12 m ²
Alfresco	101 m ²

Total 353 m²



29 Launceston Avenue, City Beach WA 6015



FINESSE

Care has been taken to ensure the accuracy of this floor/site plan, however all dimensions and areas should be considered as approximate. It has been produced as a guide for the purpose of the property sale or lease only. No credit is taken for the original building or landscape design. This floor plan/site plan design is subject to strict copyright and should not be reproduced, copied or altered without prior consent. The Agent, Vendor & Finesse Photography will not be held liable or responsible for any error, omission, misstatement or use of any data shown on this plan.

Disclaimer: Please note this floor plan is for marketing purposes and is to be used as a guide only. All dimensions are estimates only and may not be exact measurements.