

6 PRESTON AVENUE, ELDESLIE, NSW, 2570



SOLD

YOUR FOREVER HOME AWAITS IN THE CAMDEN ACRES ESTATE

This superior designed family abode has raised the bar for achieving a convenient family lifestyle. Located in the prestigious Camden Acres Estate & positioned directly across from Camden Golf Course, finding some 'you' time won't be a hard task. Its sunny disposition allows natural light to flow through the double story home highlighting its vibrant interiors that can be adorned at every turn. Spread over an expansive double storey floor plan, its use of space has been cleverly maximised to encompass comfort and practicality. Its tree lined perimeter allows you to enjoy the privacy of your backyard while entertaining guests or simply spending time with family amongst the exquisite alfresco entertaining area. The home's superb setting is impressive to say the least.

Features Include:

- Boasting 5 generously proportioned bedrooms with built in robes
- Double doors open to reveal the master suite that includes an ensuite & an walk in robe
- Multiple living areas throughout include formal living, family & a rumpus room upstairs
- Balcony off rumpus room overlooking the lush green golf course
- Well appointed kitchen with ample cupboard & bench space
- Quality stainless steel appliances including a dishwasher, gourmet oven & overhead rangehood
- Gas cooking
- Pantry
- Stone benchtops
- Breakfast bar with stone waterfall benchtops
- Bright & airy bathroom equipped with a bathtub & separate toilet
- Conveniently positioned powder room located downstairs
- Ample internal linen space located throughout
- Wide entry with solid timber double door access
- Ducted air conditioning
- Downlights
- Feature cladding to front of the home
- Undercover entertaining alfresco is perfect all year round & features a waterfall feature wall, timber decking & a ceiling fan
- Fantastic sized backyard with manicured gardens

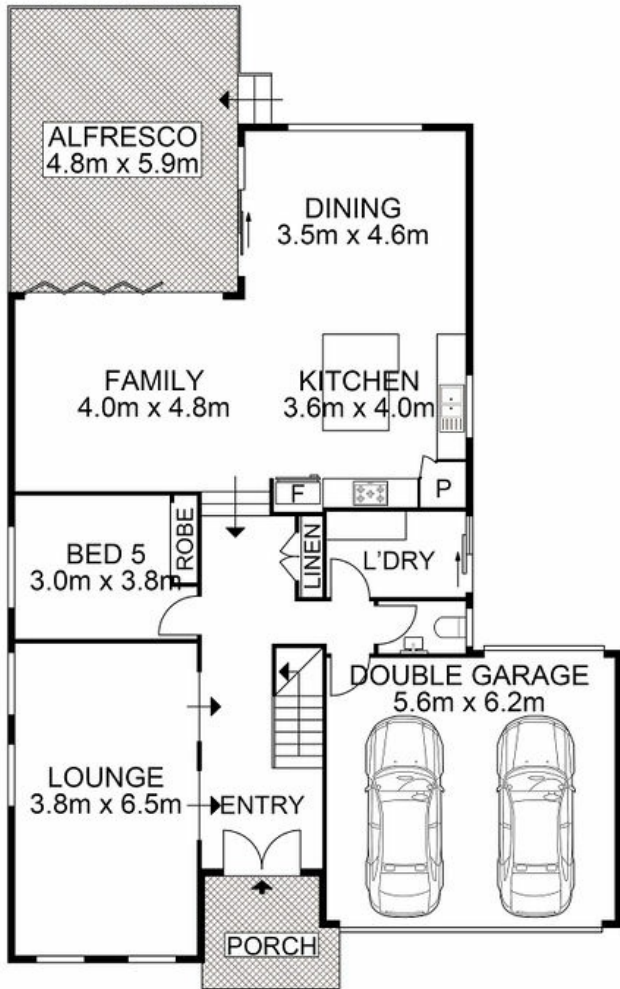
5 BED | 2 BATH | 3 CAR

PRICE:
\$1,250,000

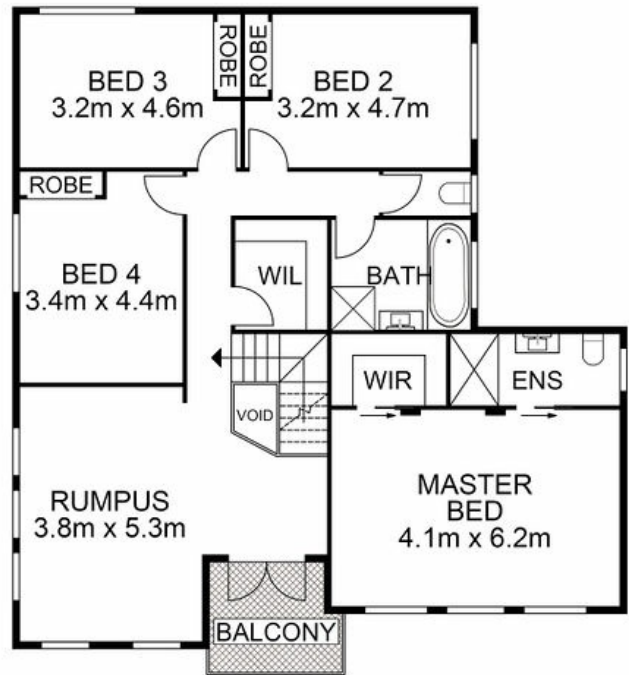
OPEN FOR INSPECTION:
N/A



Huss Al Salemi
0411699419
huss@atrealty.com.au
www.agencycentral.com.au



ENTRY LEVEL



UPPER LEVEL