

SOLD

PRICE REDUCED FOR QUICK SALE. LAMB ISLAND BEST VALUE BUY ! - 3BR/2BA/2G + 115SQM + 1017SQM!

Welcome to paradise! This delightful 3 bedroom, 2 bathroom home located on Lamb Island, QLD, Australia is an escape from the hustle and bustle of everyday life. Situated on a 1017sqm block and boasting a 115sqm floor area, this property offers plenty of room to move.

From the moment you step onto the property, you will feel right at home. The manicured gardens and the wide expanse of lawn offer the perfect place to relax and enjoy the peace and quiet of the island. The large north east facing balcony provides ample room to entertain friends and family whilst enjoying the spa bath. You will also find a large shed and your very own workshop, ideal for those who like to get their hands dirty. There is also the option of a granny flat or teenage retreat.

Inside, the home is bright and airy with plenty of natural light streaming in from the large windows. Refreshing air conditioning ensures you can keep your living space nice and cool on even the hottest of days. The built-in wardrobes, built-in kitchen appliances, floorboards and dishwasher offer maximum convenience. Plus, with broadband internet and plenty of storage, you will have all you need to make this house your home..

This property is ideal for those looking for a low-maintenance escape from the pressures of everyday life. Whether you're looking for a holiday home or somewhere to move to permanently, this property is the perfect option.

Make the move today and start living your dream on Lamb Island. With so much to offer and plenty of potential to make this property your own, you won't want to miss out. Contact us today and come to live in paradise.

3 BED | 2 BATH | 2 CAR

PRICE:
\$395,000

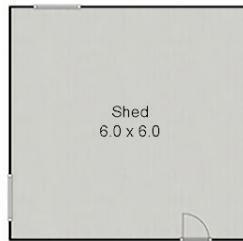
OPEN FOR INSPECTION:
N/A



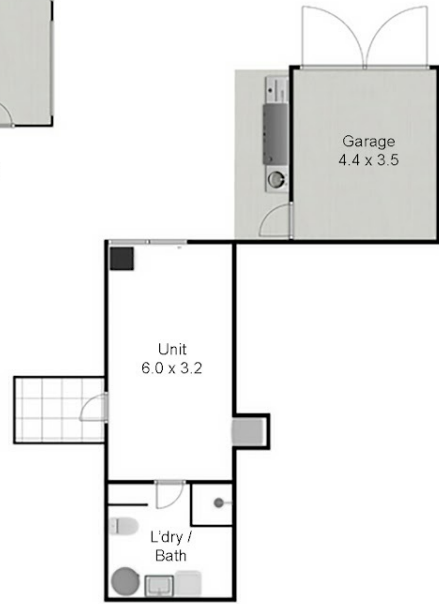
Bill Rex
0418796302
billrex@atrealty.com.au
www.atrealty.com.au



FIRST FLOOR



NOT IN POSITION



GROUND FLOOR



Total Approximate House Area 115 sqm.
 Approximate Ground Floor Area 30 sqm.
 Approximate First Floor Area 85 sqm.
 All measurements are approximate.

Disclaimer: Please note this floor plan is for marketing purposes and is to be used as a guide only. All dimensions are estimates only and may not be exact measurements.