



SOLD

LUXURIOUS 4 BEDROOM FAMILY HOME

Now Sold , Superbly built modern four bedroom home offering style and luxury with high end quality finishes throughout.

Conveniently positioned overlooking a picturesque reserve with manicured gardens and established trees you'll be hard pressed to find a better location to call home.

Features include -

Formal entry

Bedroom 1 offers a large walk in robe, spacious ensuite with dual basins

Bedrooms 2, 3 & 4 with Built in mirrored robes

Separate home theater room

Open plan living and meal areas

Premium kitchen with ample bench space, gas cook top, dishwasher and walk in pantry with its own built in microwave oven.

Floor to ceiling tiled bathrooms

Ducted reverse cycle airconditioning.

Well appointed laundry with built in cupboards.

Double Garage with internal access

Alarm system

Landscaped front and rear gardens

The home also features an outdoor entertainment area, where you can host gatherings or relax with a glass of wine.

Land size 525m2 (approx.)

This property is a must see! Don't miss your chance to escape the hustle and bustle of city living and enjoy the convenience that Angle vale has to offer. - call Darren today to arrange an inspection! 0403 776 577

RLA 269823

4 BED | 2 BATH | 2 CAR

PRICE:

\$785,000

OPEN FOR INSPECTION:

N/A



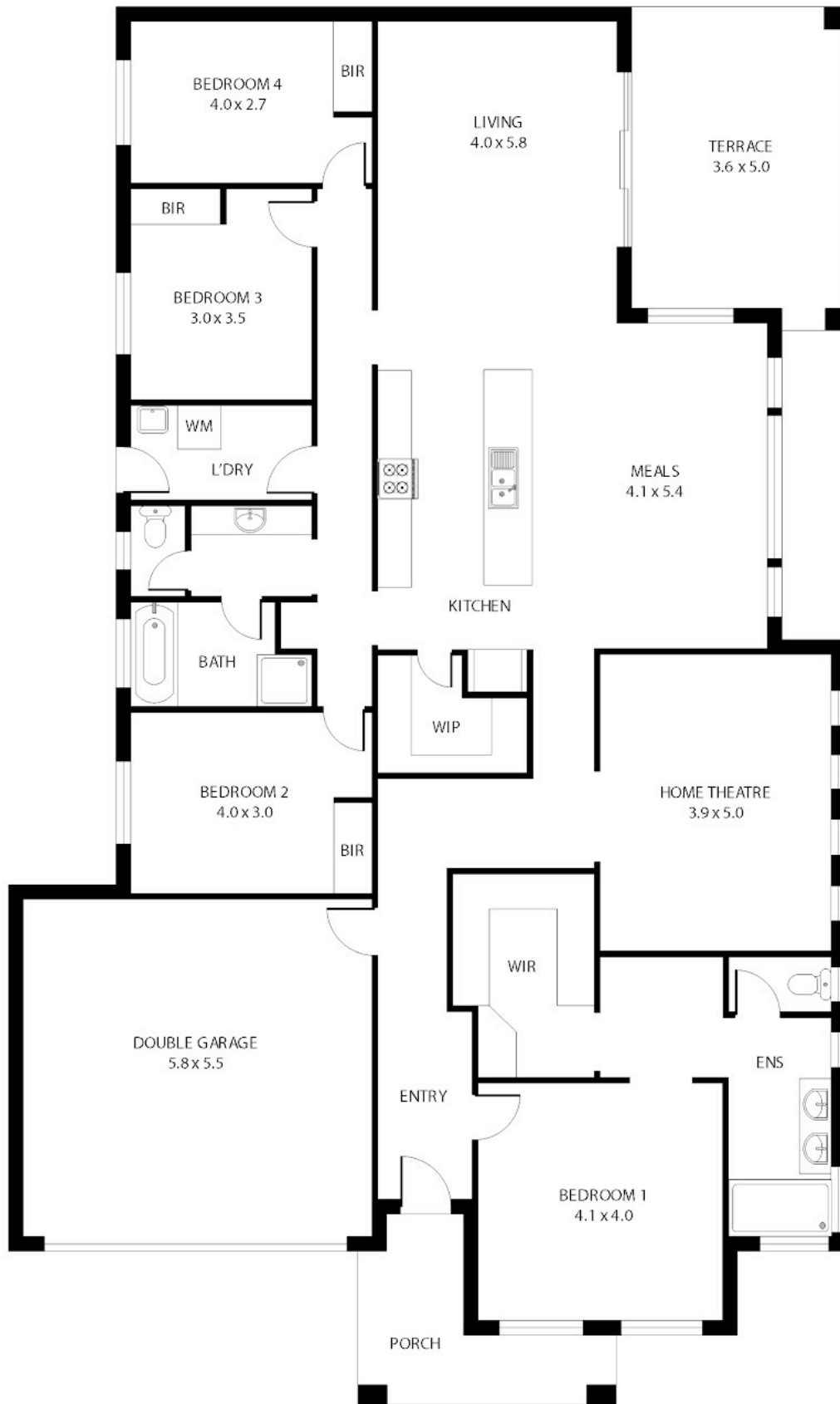
Darren Bayford

0403776577

dbayford@atrealty.com.au

www.atrealty.com.au

RLA: 269823



260m² 200m² 8m² 24m² 18m²

Disclaimer: Please note this floor plan is for marketing purposes and is to be used as a guide only. All dimensions are estimates only and may not be exact measurements.

Whilst every attempt has been made to ensure the accuracy of the floor plan contained here, measurements of doors, windows, rooms and any other items are approximate and no responsibility is taken for any error, omission, or misstatement. This plan is for illustrative purposes only and should be used as such by any prospective purchaser.

Darren Bayford
 0403776577
 dbayford@atrealty.com.au
www.atrealty.com.au

